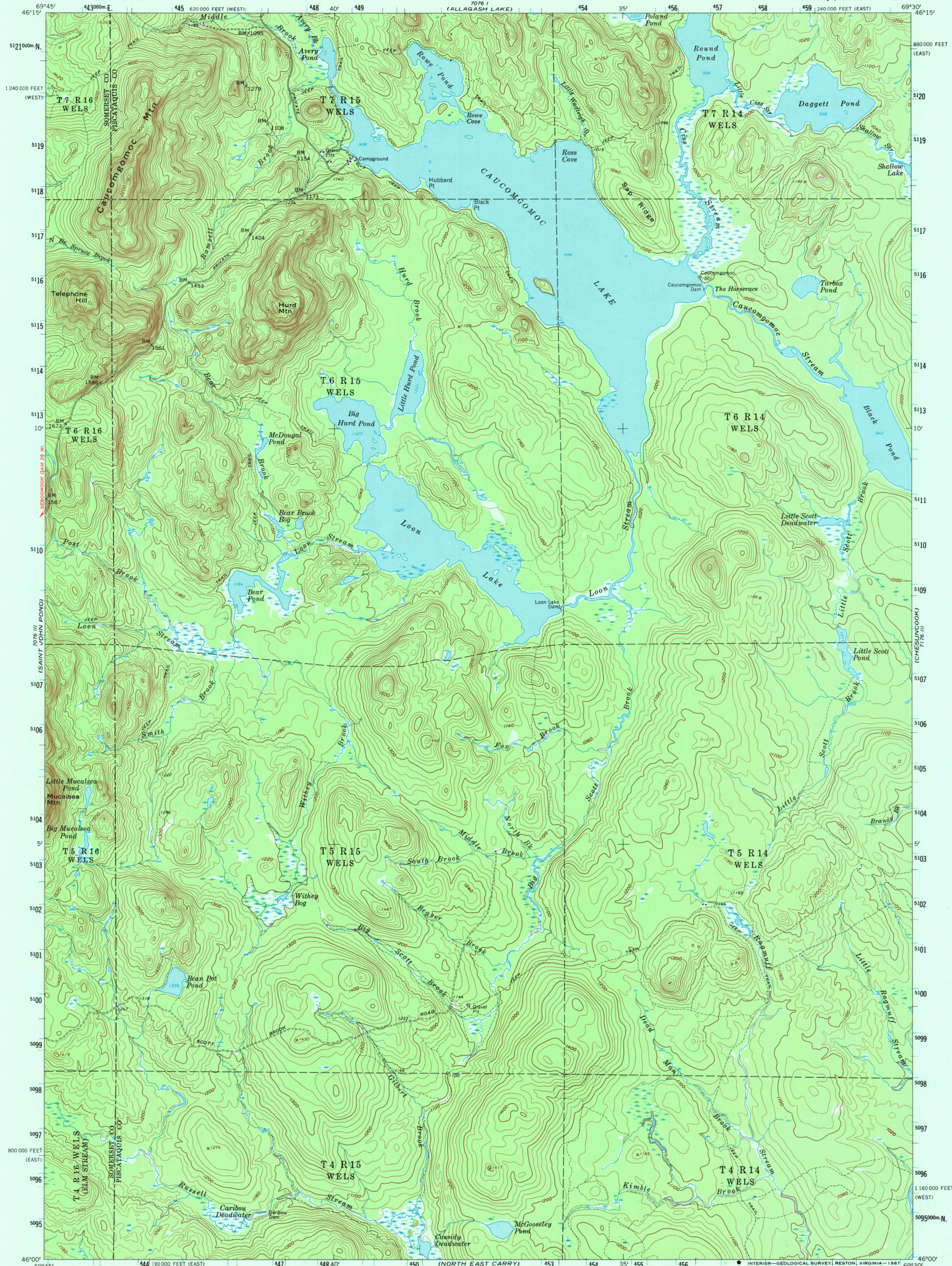


UNITED STATES
DEPARTMENT OF THE INTERIOR
GEOLOGICAL SURVEY

STATE OF MAINE
PUBLIC UTILITIES COMMISSION

CAUCOMGOMOC LAKE QUADRANGLE
MAINE
15 MINUTE SERIES (TOPOGRAPHIC)



Mapped, edited, and published by the Geological Survey

Control by USGS and USC&GS

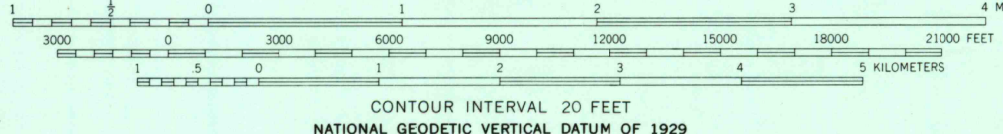
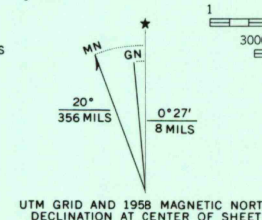
Topography from aerial photographs by photogrammetric methods

Aerial photographs taken 1957. Field check 1958

Polyconic projection. 1927 North American datum
10,000-foot grids based on Maine coordinate system,
east and west zones

1000-meter Universal Transverse Mercator grid ticks,
zone 19, shown in blue

To place on the predicted North American Datum 1983,
move the projection lines 1 meter south and 41 meters west



CONTOUR INTERVAL 20 FEET
NATIONAL GEODETIC VERTICAL DATUM OF 1929



ROAD CLASSIFICATION
Light duty ————— Unimproved dirt ————

CAUCOMGOMOC LAKE, MAINE
46069-A5-TF-024

1958

DMA 7076 II-SERIES V711

THIS MAP COMPLIES WITH NATIONAL MAP ACCURACY STANDARDS
FOR SALE BY U. S. GEOLOGICAL SURVEY, DENVER, COLORADO 80225, OR RESTON, VIRGINIA 22092
A FOLDER DESCRIBING TOPOGRAPHIC MAPS AND SYMBOLS IS AVAILABLE ON REQUEST

RETURN TO:
USGS NHD HISTORICAL MAP ARCHIVES