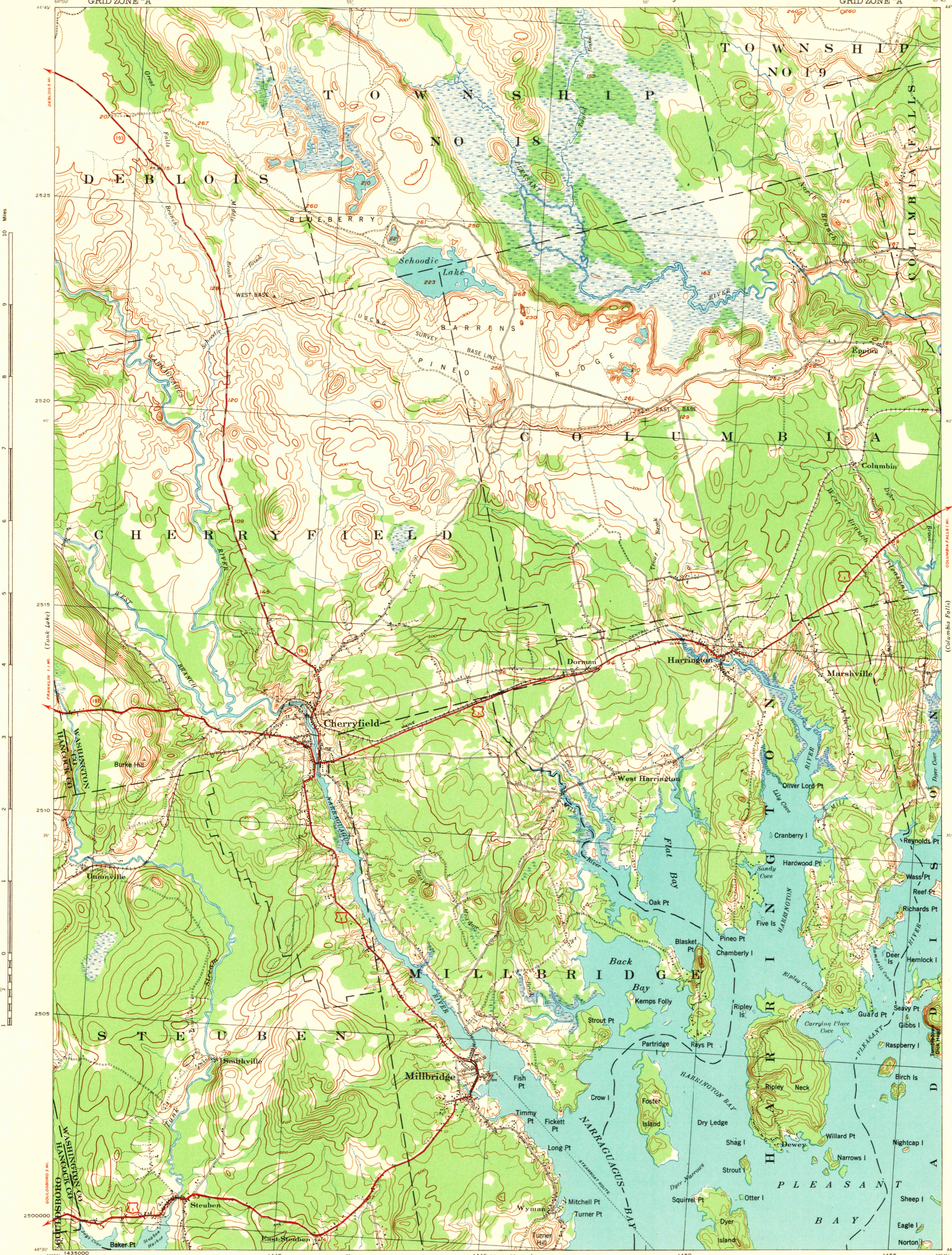


Advance edition
Subject to correction



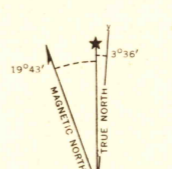
10 Miles
9
8
7
6
5
4
3
2
1
0
1
2
3
4
5
6
7
8
9
10 Miles

Prepared under the direction of the Engineer, First Corps Area, by the Work Projects Administration, 1941.
Horizontal and vertical control by U. S. Geological Survey.
Topography, culture and drainage in part revised by the Engineer, First Corps Area, from aerial photographs taken 1941 by Aero Service Corporation, Philadelphia, Pa.
Polyconic Projection, North American Datum.

Scale 1:62,500
1 0 1000 2000 3000 4000 5000 Yards
1 0 1 2 3 Miles

Contour interval 20 feet
Datum is mean sea level

FIVE THOUSAND YARD GRID COMPUTED FROM "GRID SYSTEM FOR PROGRESSIVE MAPS IN THE U. S." ZONE A, U. S. C. & G. S. SPECIAL PUBLICATION NO. 59
THE LAST THREE DIGITS OF THE GRID NUMBERS ARE OMITTED
NOTE: OFFICERS USING THIS MAP WILL MARK HEREON CORRECTIONS AND ADDITIONS WHICH COME TO THEIR ATTENTION AND MAIL DIRECT TO "THE CHIEF OF ENGINEERS, WASHINGTON, D. C."



ROUTES USUALLY TRAVELED
HARD IMPERVIOUS SURFACES
OTHER SURFACE IMPROVEMENTS
U. S. ROUTE 1941 STATE ROUTE

CHERRYFIELD, ME.
N4430-W6745/15

USCS
Historical File
Topographic Division

U.S.A. FILE COPY