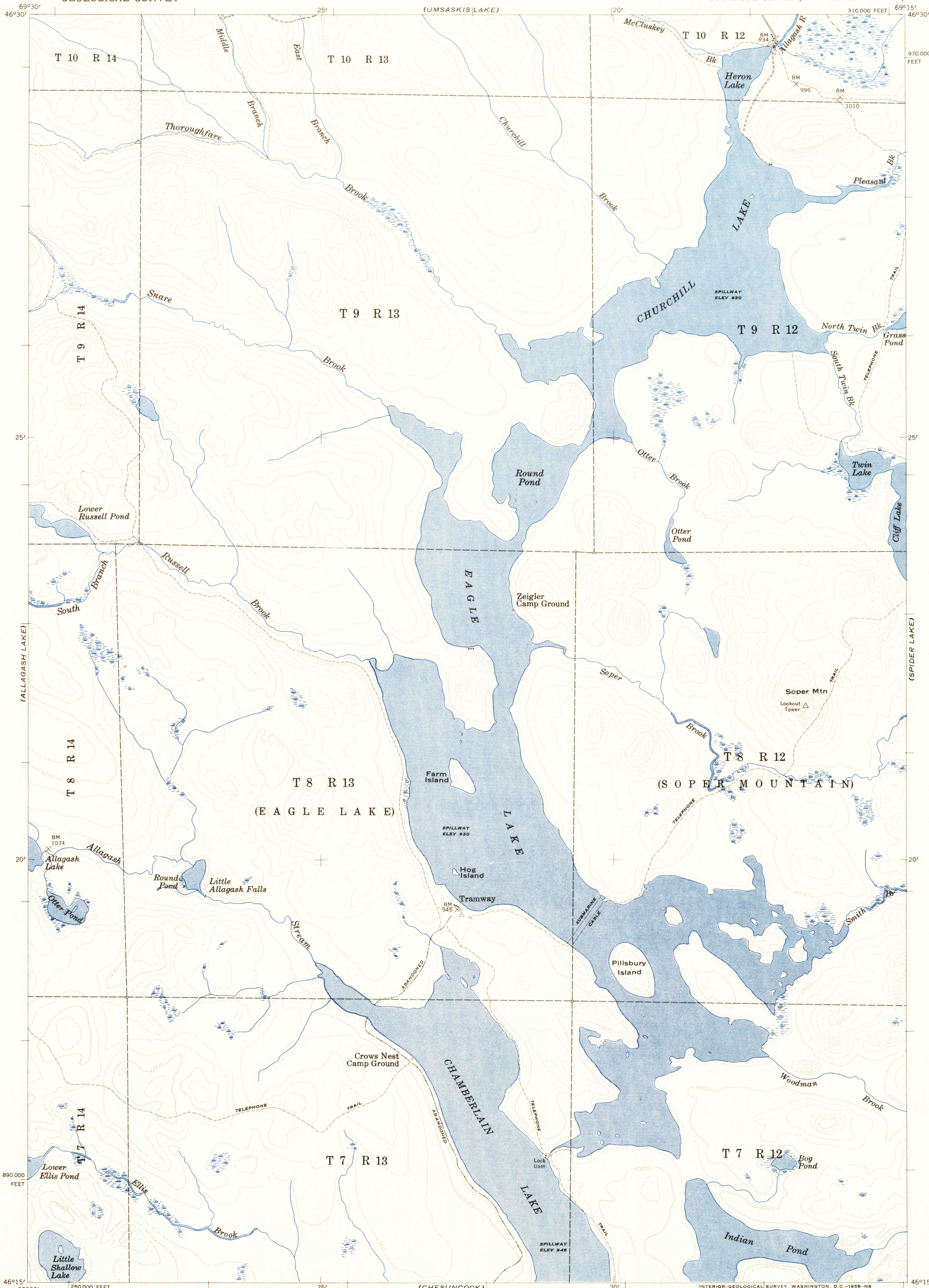


(MUSQUACOOK
LAKES)

U.S.G.S.
FILE COPY
TOPOGRAPHIC DIVISION



(SPIDER LAKE)

(TELOS LAKE)

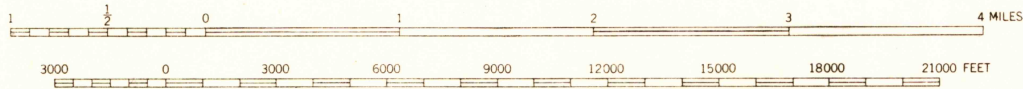
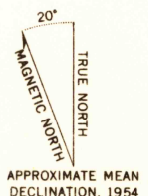
(CAUCOMOGONOC
LAKE)

Mapped by the Army Map Service
Edited, and published for civil use
by the Geological Survey

Control by USGS and USC&GS

Topography from aerial photographs by multiplex methods for
1:250 000 scale publication. Aerial photographs taken 1951
and 1952. Map field checked by the Geological Survey 1954

Polyconic projection. 1927 North American datum
10,000-foot grid based on Maine coordinate system,
east zone



CONTOUR INTERVAL 50 FEET
DATUM IS MEAN SEA LEVEL



ROAD CLASSIFICATION
Improved _____
Unimproved _____
Trail _____

CHURCHILL LAKE, ME.
N 4615-W 6915/15

USGS
Historical File
Topographic Division

1954

FOR SALE BY U.S. GEOLOGICAL SURVEY, WASHINGTON 25, D.C.
A FOLDER DESCRIBING TOPOGRAPHIC MAPS AND SYMBOLS IS AVAILABLE ON REQUEST

AUG 8 1956

6195