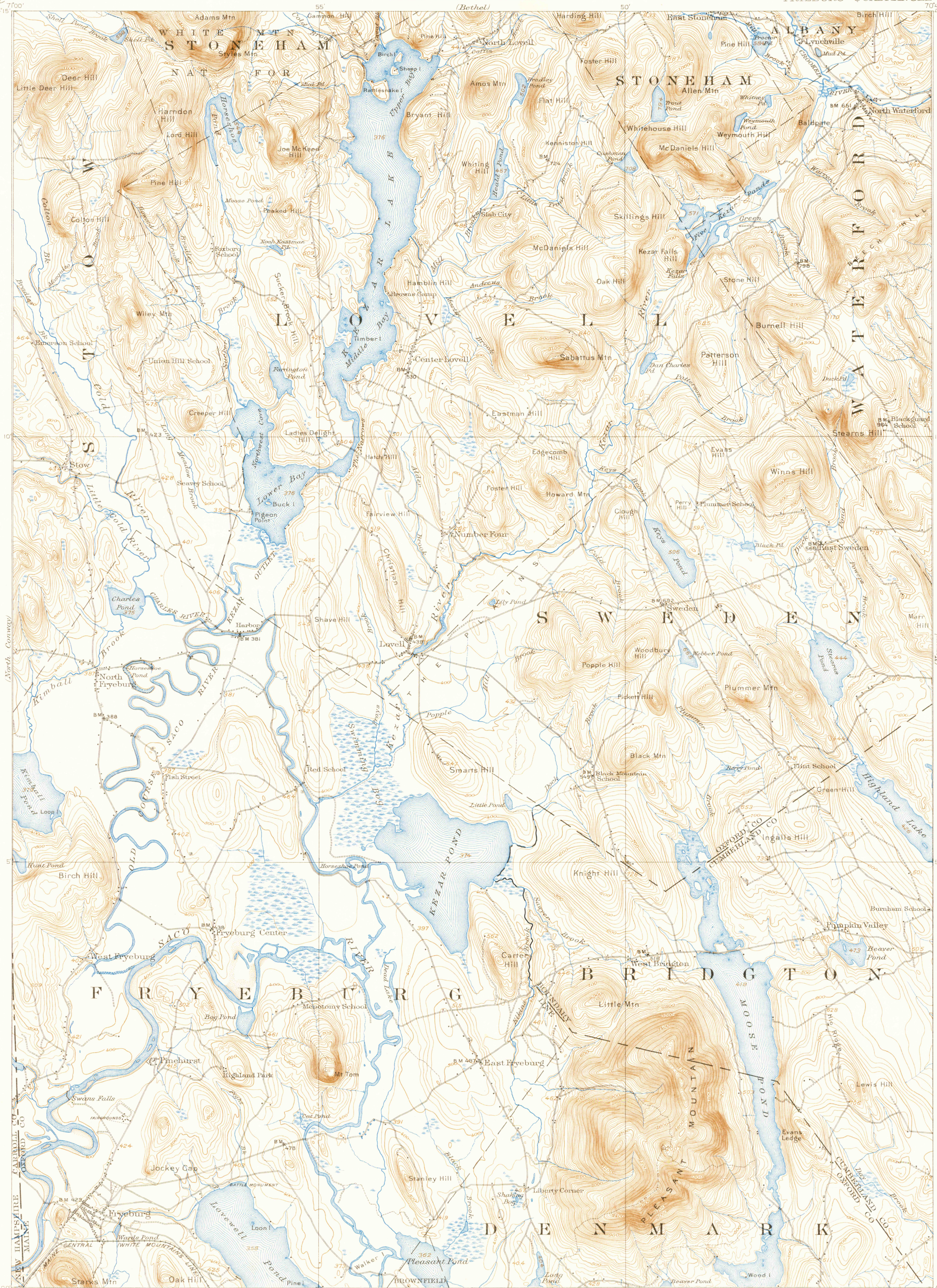


U. S. G. S.
FILE COPY



7000
44°15'
70°00'
R. B. Marshall, Chief Geographer.
Frank Sutton, Geographer in charge.
Topography by Hersey Munroe.
Control by Coast and Geodetic Survey.
C. K. Alexander, and E. B. Hillegass.
Surveyed in 1909.
SURVEYED IN COOPERATION WITH THE STATE OF MAINE.

(Kezar Falls)
Scale 62500
1 2 3 4 5 Miles
1 2 3 4 5 Kilometers
Contour interval 20 feet.
Datum is mean sea level.

15 Miles
14
13
12
11
10
9
8
7
6
5
4
3
2
1
0
1
2
3
4
5
6
7
8
9
10
11
12
13
14
15
Edition of June 1911, reprinted 1939.
Polyconic projection, North American datum

ME-N.H.
FRYEBURG
JUL 28 1939

U. S. G. S.
FILE COPY
Inspection and Editing.

3790