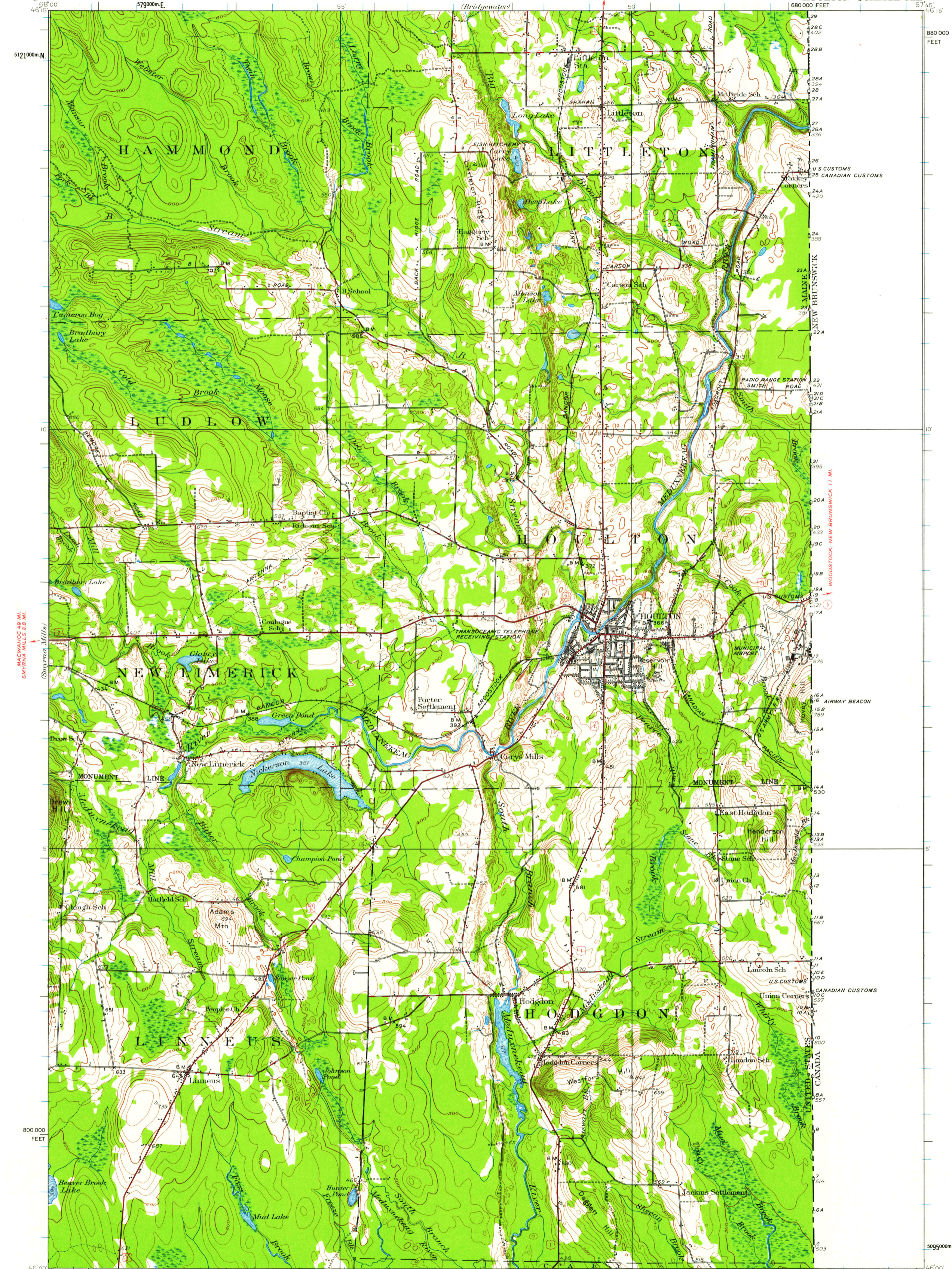


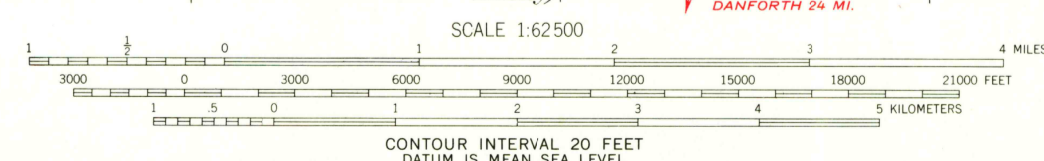
UNITED STATES
DEPARTMENT OF THE INTERIOR
GEOLOGICAL SURVEY

MAINE
(ARROSTOCK COUNTY)
HOULTON QUADRANGLE



Topography by R.J. Belton, R.E. Amidon, and R.L. Marx
Culture and drainage in part compiled from aerial photographs taken by Air Corps U.S. Army
Surveyed in 1934
Revised in 1951

ROAD CLASSIFICATION
Heavy-duty ——— Light-duty ———
Medium-duty ——— Unimproved dirt - - - - -
U.S. Route



Interior-Geological Survey, Washington, D.C.—1942
MR 3870
POLYCONIC PROJECTION. To place on 1927 North American datum move projection lines 70 feet north
10,000-foot grid based on Maine (East) rectangular coordinate system
1000-meter Universal Transverse Mercator grid ticks, zone 19, shown in blue

FOR SALE BY U. S. GEOLOGICAL SURVEY, WASHINGTON 25, D. C.
A FOLDER DESCRIBING TOPOGRAPHIC MAPS AND SYMBOLS IS AVAILABLE ON REQUEST

HOULTON, ME.
N4600—W6745/15
1951

U.S.G.S.
TOPOGRAPHIC DIVISION

JAN 10 1963

3175