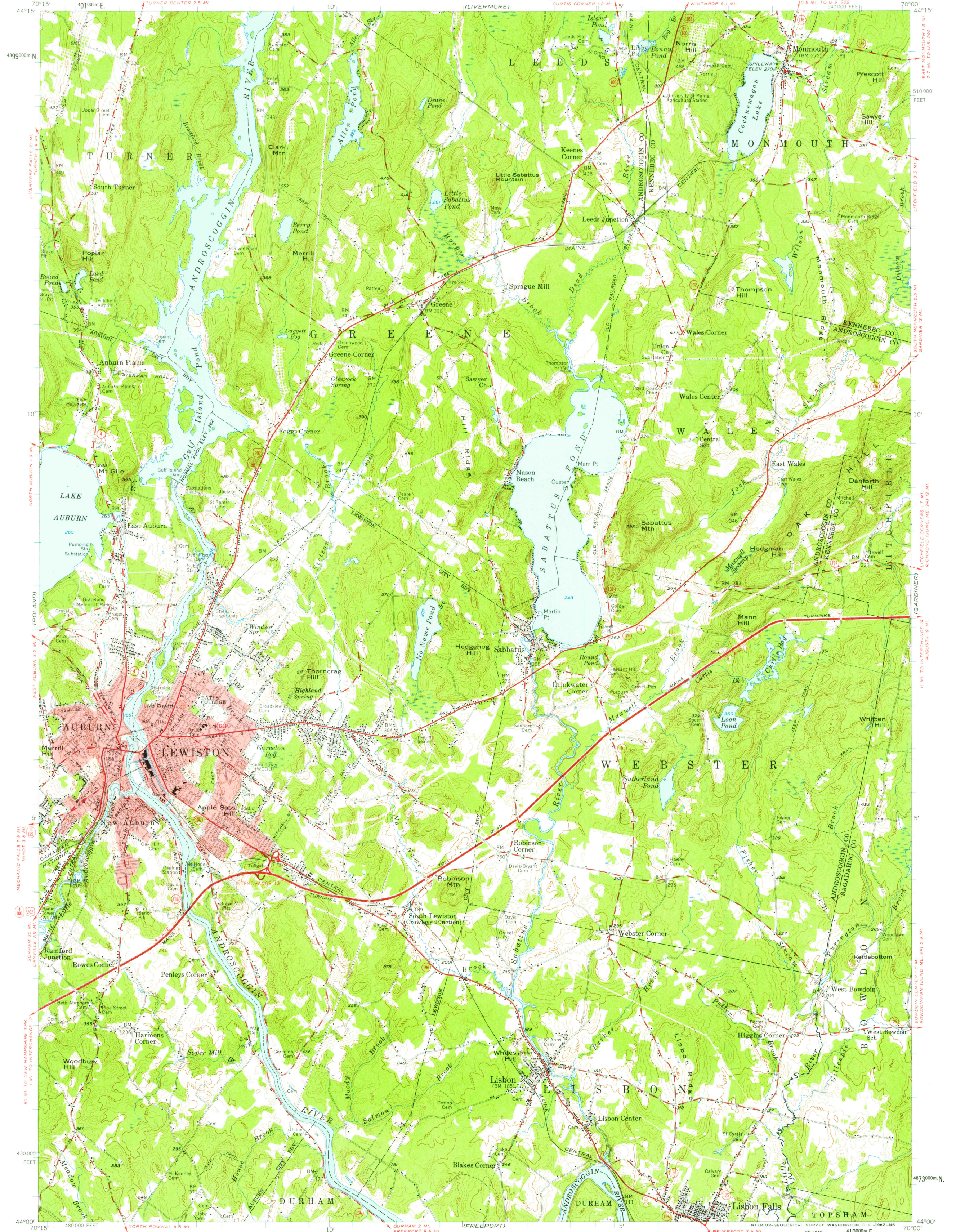


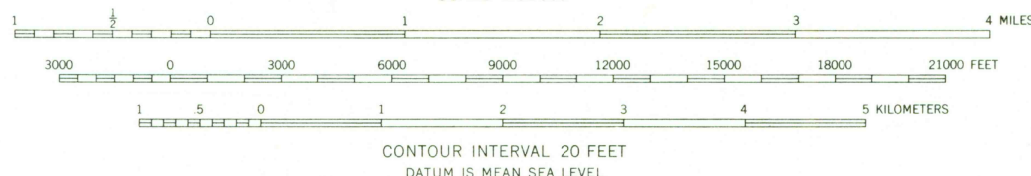
UNITED STATES
DEPARTMENT OF THE INTERIOR
GEOLOGICAL SURVEY

LEWISTON QUADRANGLE
MAINE
15 MINUTE SERIES (TOPOGRAPHIC)



Mapped, edited, and published by the Geological Survey
Control by USGS, USC&GS, and Maine Geodetic Survey
Topography from aerial photographs by Kelsh plotter
Aerial photographs taken 1953. Field check 1956
Polyconic projection. 1927 North American datum
10,000-foot grid based on Maine coordinate system, west zone
1000-meter Universal Transverse Mercator grid ticks,
zone 19, shown in blue
Red tint indicates areas in which only
landmark buildings are shown

APPROXIMATE MEAN
DECLINATION, 1956



ROAD CLASSIFICATION
Heavy duty ——— Light-duty ———
Medium-duty ——— Unimproved dirt ———
U.S. Route ——— State Route ———



LEWISTON, ME.
N 4400—W 7000/15

1956

RT-F FILE COPY