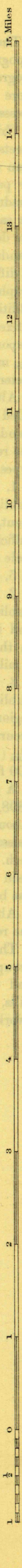
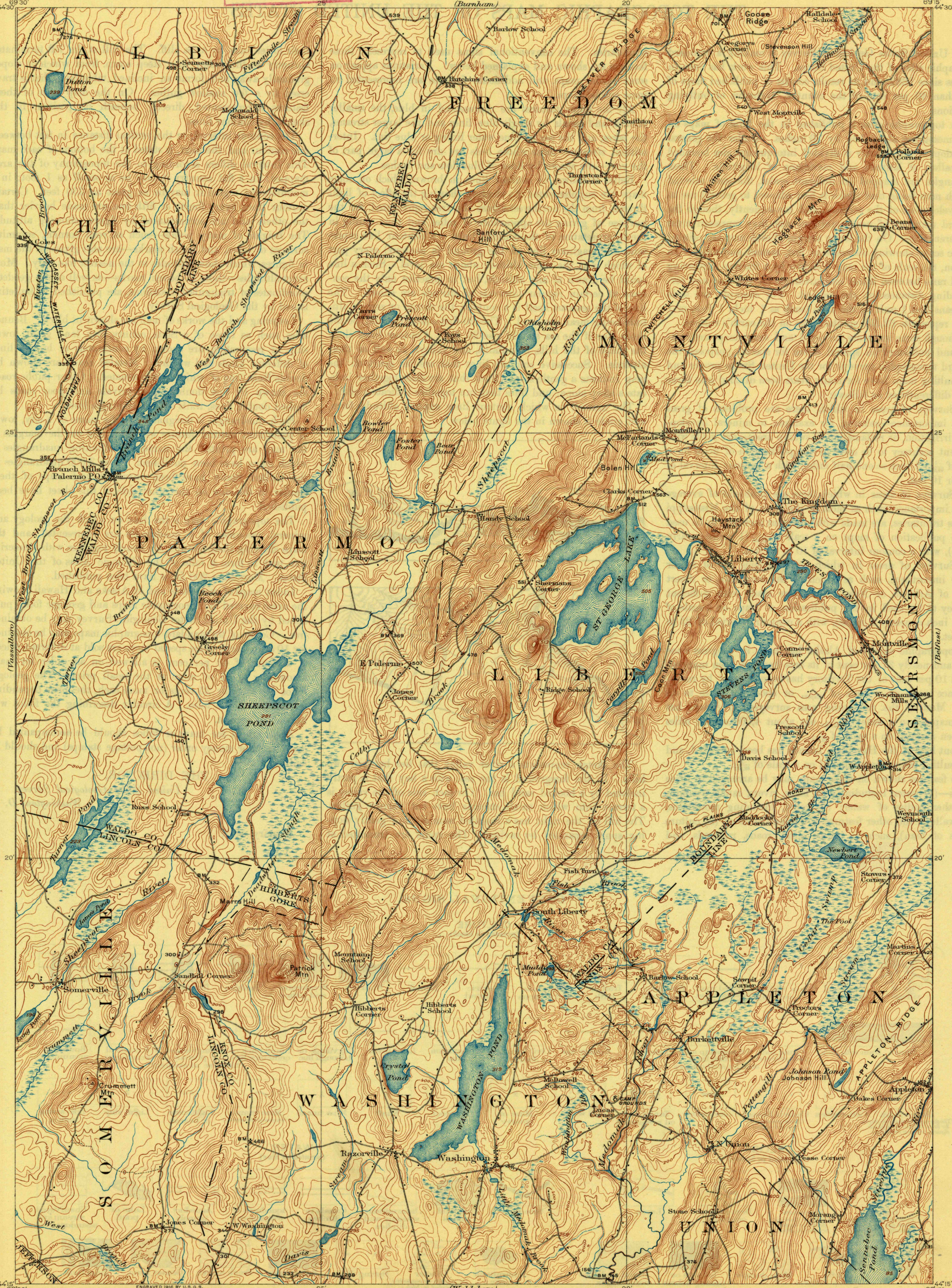
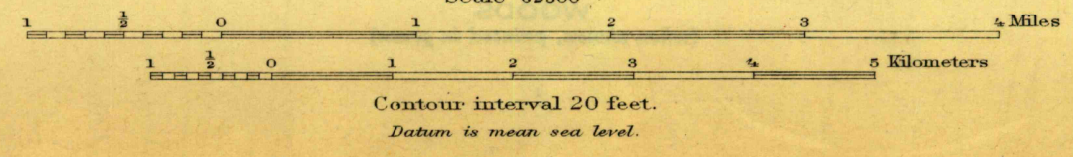


U.S.G.S.
FILE COPY
Inspection and Editing



ENGRAVED 1916 BY U.S.G.S.
R.B. Marshall, Chief Geographer.
Frank Sutton, Geographer in charge.
Topography by W.H. Griffin, Duncan Hannegan,
and C.H. Davey.
Control by Geo. T. Hawkins, E.L. McNair,
J.M. Parkins, and K.E. Schlachter.
Surveys in 1914.



Edition of 1916, reprinted 1927
Polyconic projection, North American datum

LIBERTY, ME.

MAY 18 1927 (2035)

U.S.G.S.
FILE COPY
Inspection and Editing