

SANDY BAY

MAINE 1:62,500

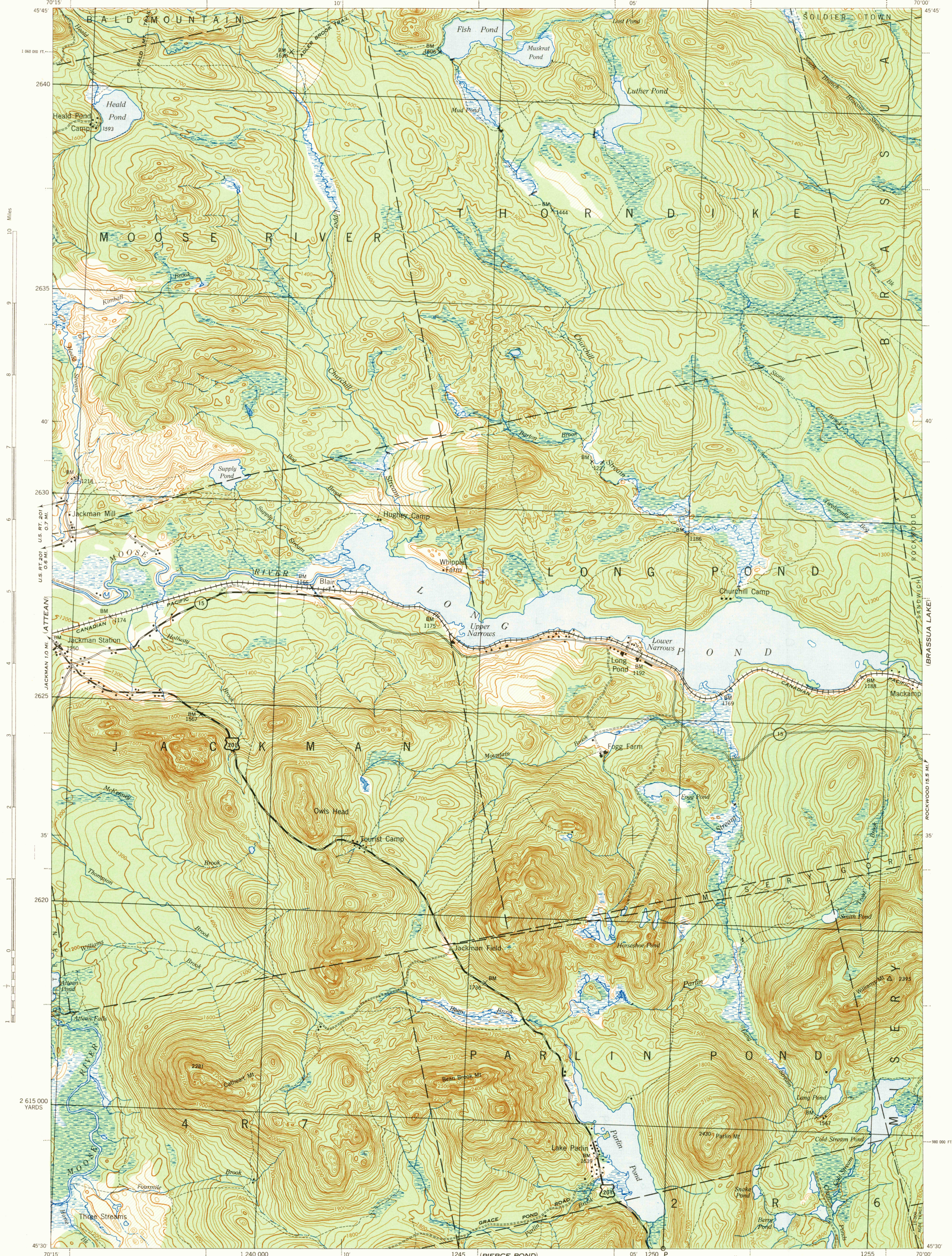
SOMERSET CO.

24° 23° 22° 21° 20° 19°

WAR DEPARTMENT
CORPS OF ENGINEERS, U. S. ARMY

FIRST EDITION-AMS 1

LONG POND QUADRANGLE
15 MINUTE SERIES

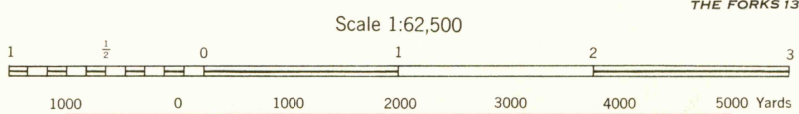


SPENCER

First Edition (AMS 1) 1944.
 Prepared under the direction of the Chief of Engineers, U. S. Army, by the Army Map Service (SU), U. S. Army, Washington, D. C., 1944.
 Based on U. S. G. S. quadrangle, Long Pond 1:62,500, 1924.
 Vertical and Horizontal control by U. S. Coast and Geodetic Survey, and railroad valuation surveys.
 Surveyed in 1922.
 Revised from controlled mosaic (KS), San Antonio, Texas.
 Aerial photography by the U. S. Army Air Force, 1943.
 Polyconic Projection, North American Datum.

ROAD CLASSIFICATION 1943

Dependable hard surface.	Loose surface graded.	U. S. Route
Heavy duty road.	Dry weather road.	160
Secondary hard surface.	Dirt road.	90
All-weather road.	State Route	
More than two lanes indicated by note along road with tick at point of change.	3-LANE 1-4 LANE	



CONTOUR INTERVAL 20 FEET
 DATUM IS MEAN SEA LEVEL

FIVE THOUSAND YARD GRID COMPUTED FROM GRID SYSTEM FOR PROGRESSIVE MAPS IN THE U. S. ZONE A. U. S. C. & G. S. SPECIAL PUBLICATION NO. 59

THE LAST THREE DIGITS OF THE GRID NUMBERS ARE OMITTED.

MAINE STATE GRID ZONE WEST IS INDICATED BY DOTTED TICKS OUTSIDE THE NEAT LINE AT 10,000 FOOT INTERVALS.

NOTE: OFFICERS USING THIS MAP WILL MAKE HORIZONTAL CORRECTIONS AND ADJUSTIONS WHICH COME TO THEIR ATTENTION AND MAIL RESULTS TO THE CHIEF OF ENGINEERS, WASHINGTON, D. C.



LEGEND
 BRUSH

U. S. G. S.
 FILE COPY
 Inspector: Wm. A. H. 1958

LONG POND, MAINE
 N4530-W7000/15