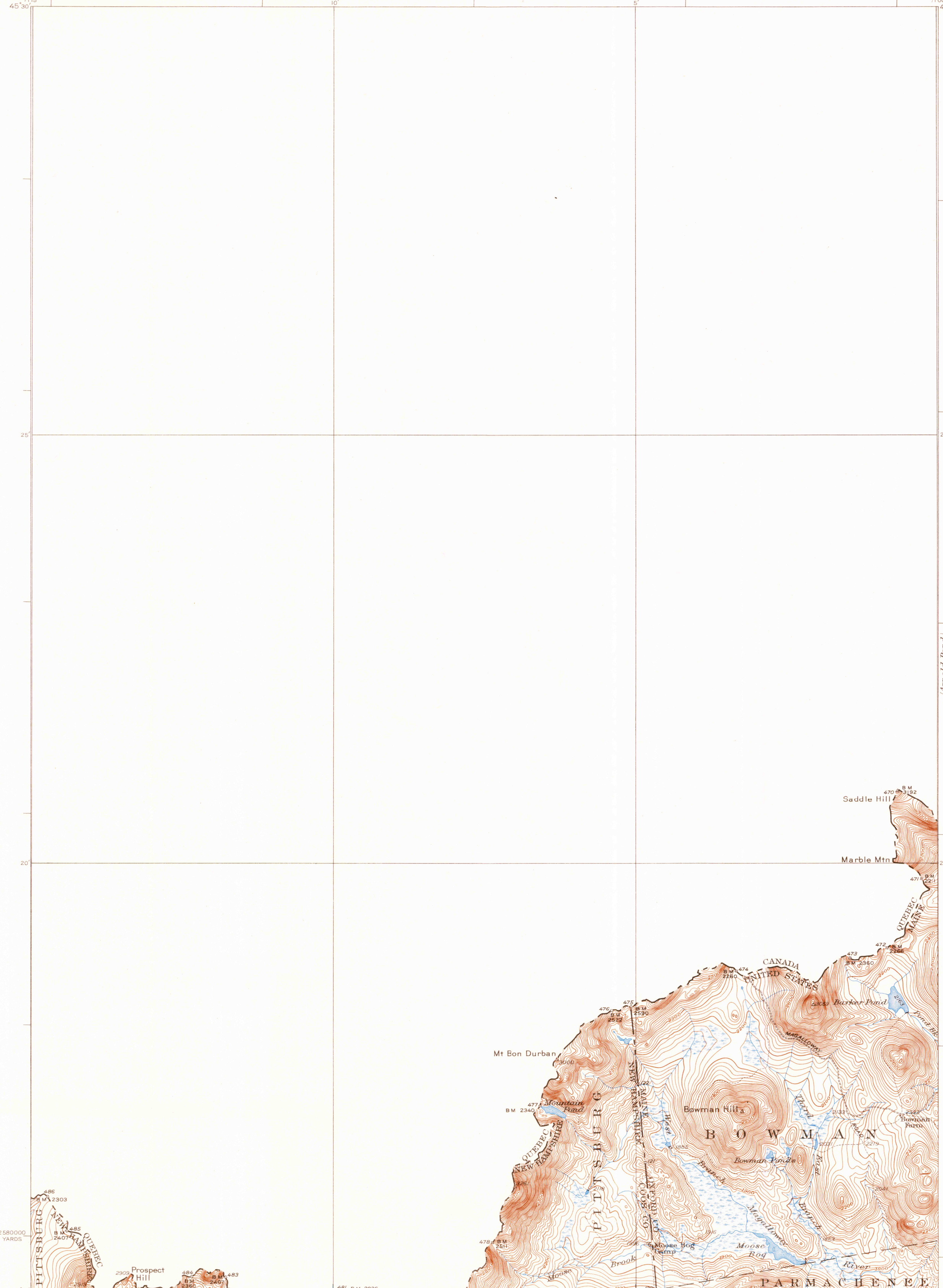
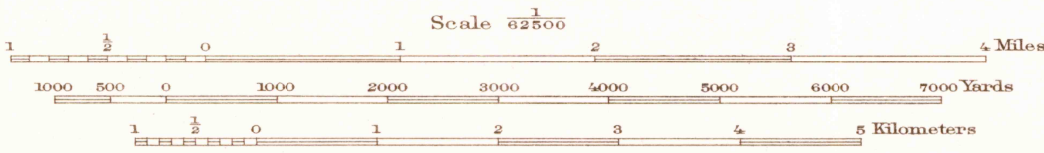


71°15' 45'30" 10' 5' 71°00' 45'30"

15 Miles
14
13
12
11
10
9
8
7
6
5
4
3
2
1



Topography by J.I. Gayetty, Crawford Dickey, and International Boundary Commission Control by International Boundary Commission Surveyed in 1927



Contour interval 20 feet.
Datum is mean sea level.

Polyconic projection. North American datum
5000 yard g-rd based upon U.S. zone system A

MOOSE BOG ME-N. H.
Edition of 1931
reprinted 1936

Indian Stream

Arnold Pond

APPROXIMATE MEAN DECLINATION, 1927.