

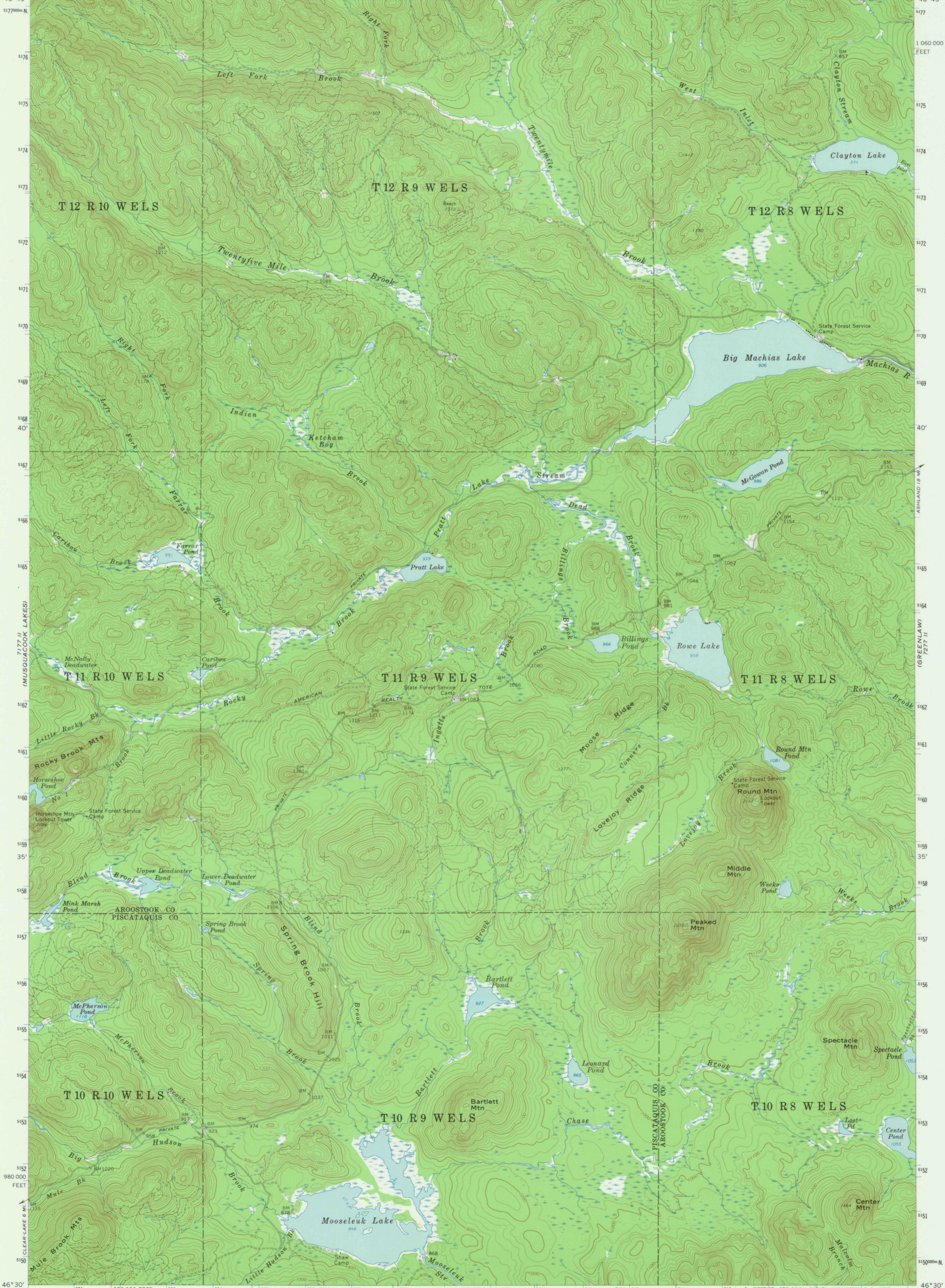
7271 (FISH RIVER LAKE)

7271 (WINTERVILLE)

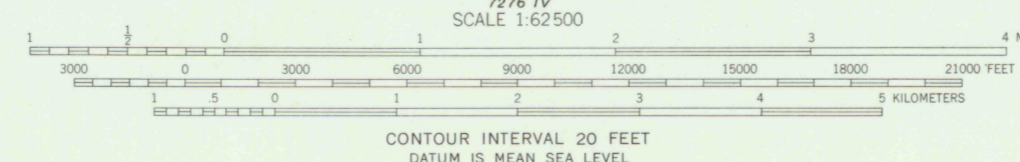
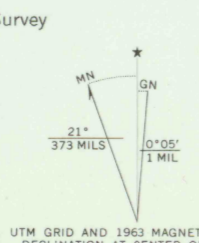
UNITED STATES  
DEPARTMENT OF THE INTERIOR  
GEOLOGICAL SURVEY

MOOSELEUK LAKE QUADRANGLE  
MAINE  
15 MINUTE SERIES (TOPOGRAPHIC)

69° 00' 68° 45' 430 000 FEET 18 46° 45' 1060 000 FEET



Mapped, edited, and published by the Geological Survey  
Control by USGS and USC&GS  
Topography by planetable surveys 1931. Revised 1963  
Polyconic projection. 1927 North American datum  
10,000-foot grid based on Maine coordinate system,  
east zone  
1000-meter Universal Transverse Mercator grid ticks,  
zone 19, shown in blue



CONTOUR INTERVAL 20 FEET  
DATUM IS MEAN SEA LEVEL

ROAD CLASSIFICATION  
Light-duty ——— Unimproved dirt - - - - -



MOOSELEUK LAKE, MAINE  
N4630—W6845/15

FOR SALE BY U. S. GEOLOGICAL SURVEY, WASHINGTON 25, D. C.  
A FOLDER DESCRIBING TOPOGRAPHIC MAPS AND SYMBOLS IS AVAILABLE ON REQUEST

1963  
AMS 7277 III-SERIES V711

7176 (SPIDER LAKE)

7276 (GRAND LAKE SEBES)