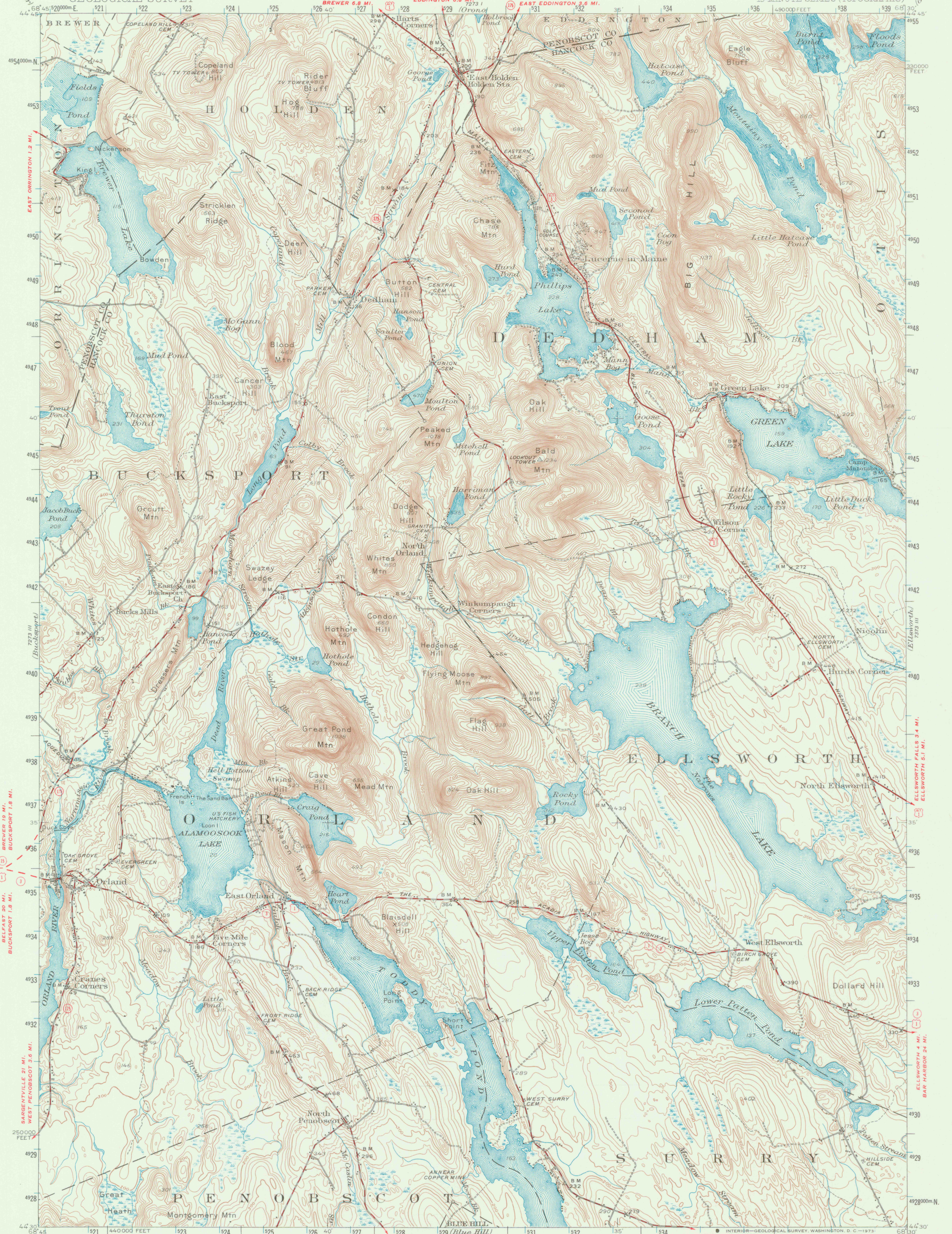


UNITED STATES  
DEPARTMENT OF THE INTERIOR  
GEOLOGICAL SURVEY

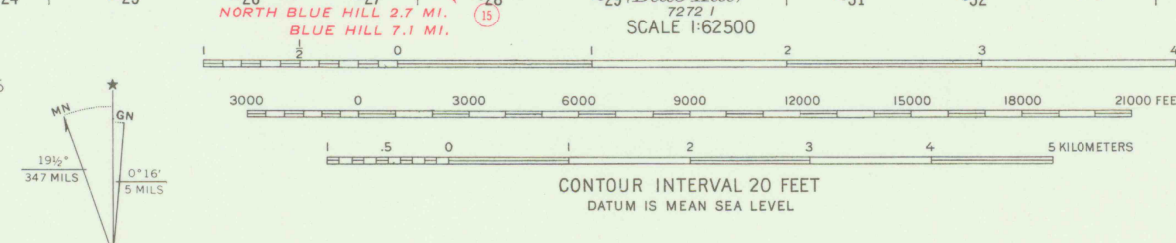
ORLAND QUADRANGLE  
MAINE

15-MINUTE SERIES (TOPOGRAPHIC)



68° 45' 20" W  
44° 45' N  
EAST ORRINGTON 1.2 MI.  
BREWSTER 4.4 MI.  
BUCKSPORT 1.6 MI.  
BARGENTVILLE 21 MI.  
WEST PENOBSCOT 3.6 MI.  
NORTH BLUE HILL 2.1 MI.  
BLUE HILL 7.1 MI.  
SURREY 3 MI.  
ELLSWORTH 4 MI.  
BAR HARBOR 24 MI.  
ELLSWORTH FALLS 3.4 MI.  
ELLSWORTH 6.1 MI.

Mapped, edited, and published by the Geological Survey  
Control by USGS and USC&GS  
Culture and drainage in part compiled from aerial photographs  
taken 1942. Topography by plane-table surveys 1945-1946. Revised 1955  
Polyconic projection, 1927 North American datum  
10000 foot grid based on Maine coordinate system,  
east zone  
1000 meter Universal Transverse Mercator Grid ticks,  
zone 19, shown in blue



ROAD CLASSIFICATION  
Heavy-duty ——— Light-duty ———  
Medium-duty ——— Unimproved dirt ———  
U.S. Route □ State Route ○  
ORLAND, ME.  
N 44° 30' W 68° 30' E  
1955  
AMS 7273 II—SERIES V711

THIS MAP COMPLIES WITH NATIONAL MAP ACCURACY STANDARDS  
FOR SALE BY U.S. GEOLOGICAL SURVEY, WASHINGTON, D.C. 20242  
A FOLDER DESCRIBING TOPOGRAPHIC MAPS AND SYMBOLS IS AVAILABLE ON REQUEST