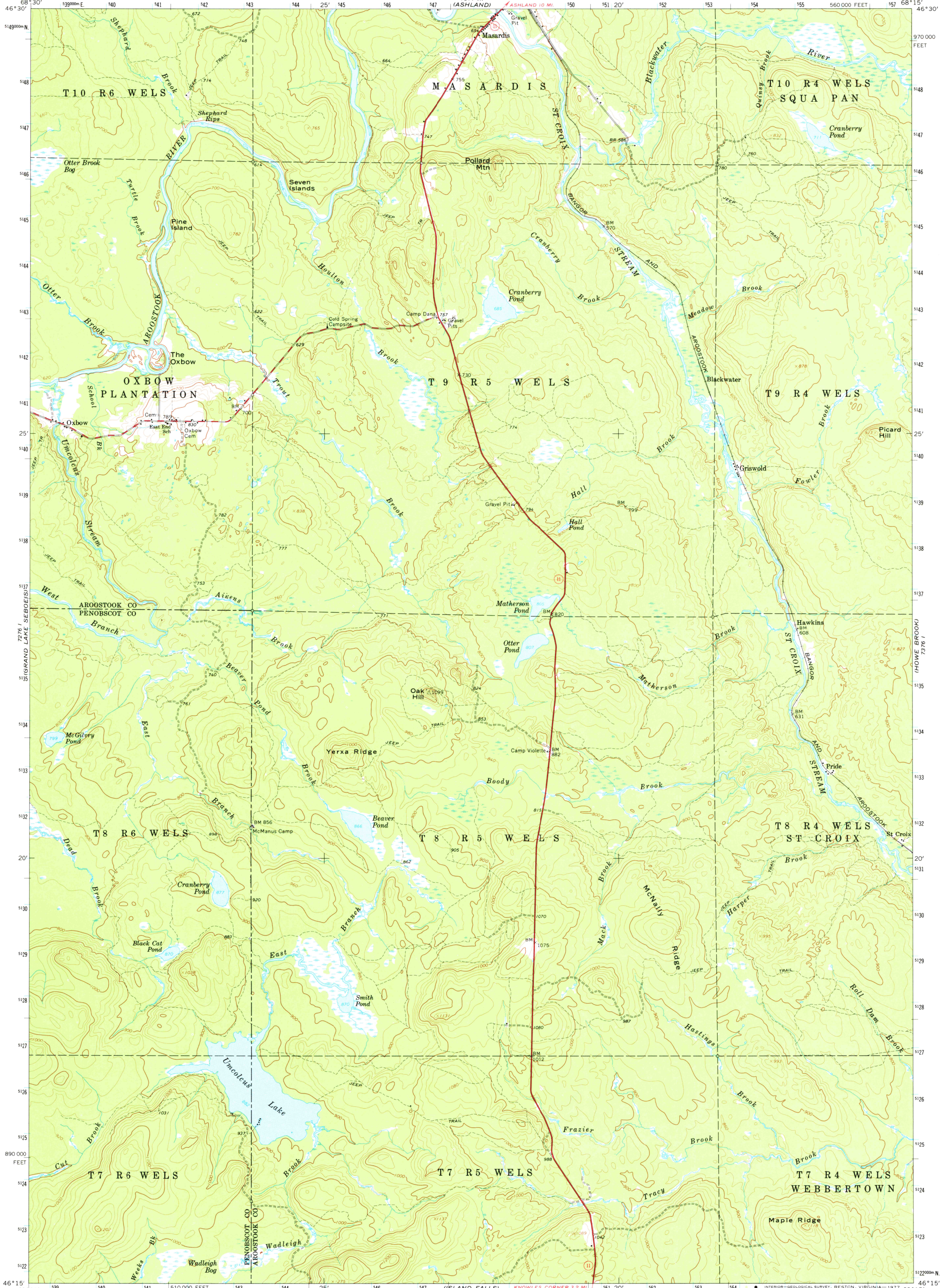
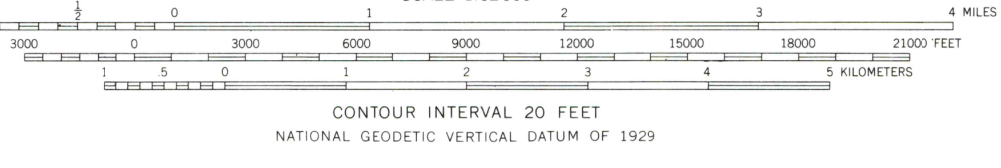
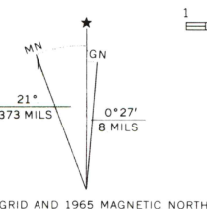


727 II (GREEN LAKE)
727 II (PRESQUE ISLE)
726 I (GRAND LAKE SEBOE(S)S)
726 II (WHIN POND)
726 II (GAYNSBORO MILLS)



Maped, edited, and published by the Geological Survey
Control by USGS and USC&GS
Topography by photogrammetric methods from aerial
photographs taken 1963. Field checked 1965
Supersedes map dated 1940
Polyconic projection: 1927 North American datum
10,000-foot grid based on Maine coordinate system, east zone
1000-meter Universal Transverse Mercator grid ticks,
zone 19, shown in blue



OXBOW, MAINE
N4615—W6815/15
1965
AMS 7376 IV—SERIES V711

THIS MAP COMPLIES WITH NATIONAL MAP ACCURACY STANDARDS
FOR SALE BY U.S. GEOLOGICAL SURVEY, RESTON, VIRGINIA 22092
A FOLDER DESCRIBING TOPOGRAPHIC MAPS AND SYMBOLS IS AVAILABLE ON REQUEST