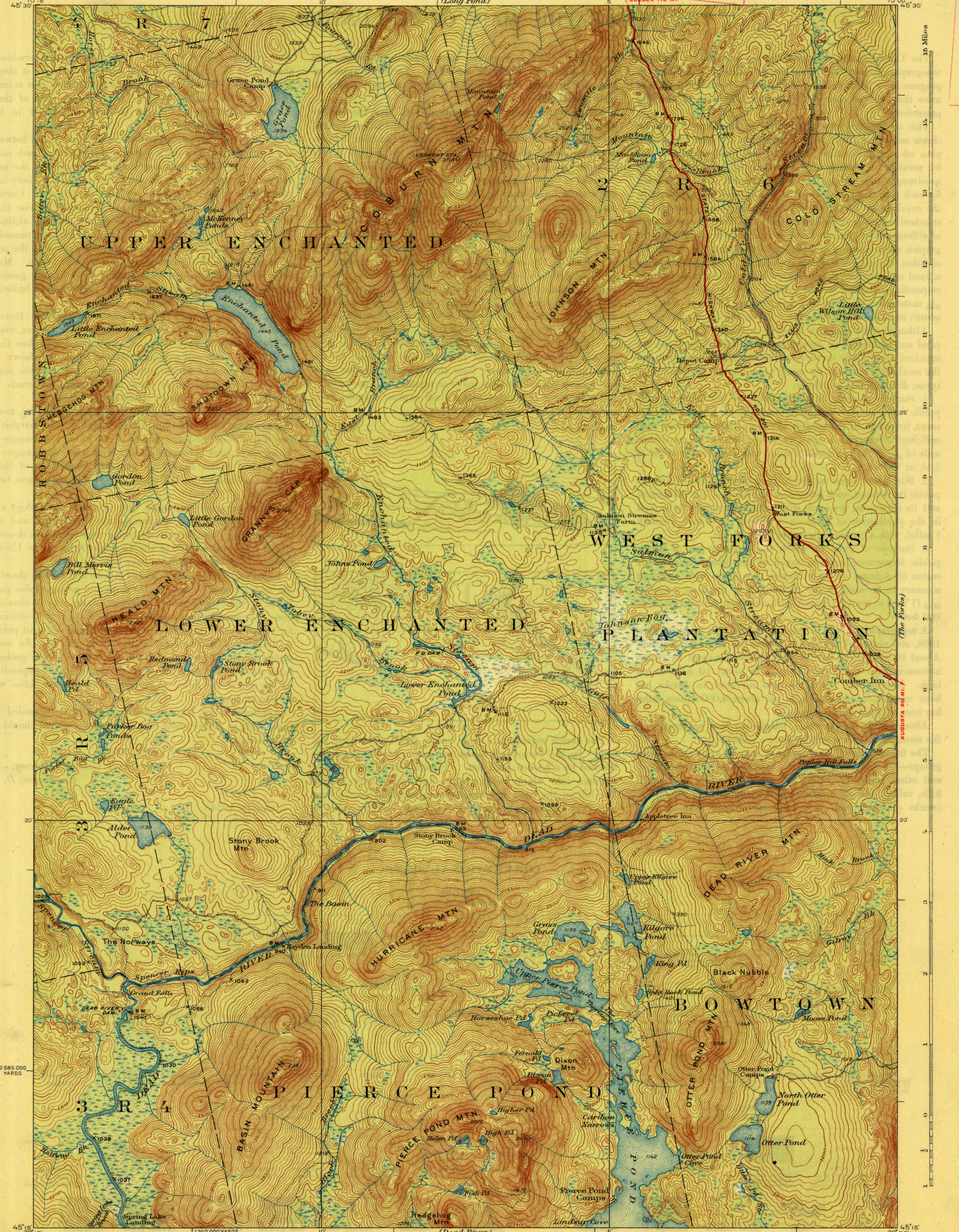


U.S.G.S.
FILE COPY
Inspection and Editing

(Bassara Lake)

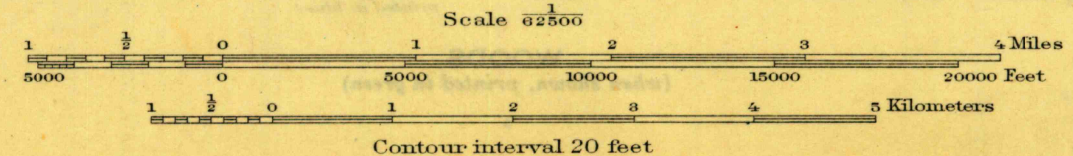
U.S.G.S.
FILE COPY
Inspection and Editing



2 585 000
YARDS

Topography by W. K. McKinley, R. J. Belton, and
W. C. Thompson
Control by U.S. Geological Survey
Surveyed in 1924-1925

APPROXIMATE MEAN
DECLINATION, 1925



Contour interval 20 feet
Datum is mean sea level

Polyconic projection North American datum
5000 yard grid based upon U.S. zone system, A

THROUGH ROUTES
SECONDARY ROUTES
SECTIONS IN POOR CONDITION

MAR. 1927
PIERCE POND, ME.
Edition of 1927

DEC 7 - 1927 (2565)

U.S.G.S.
FILE COPY
Inspection and Editing

256