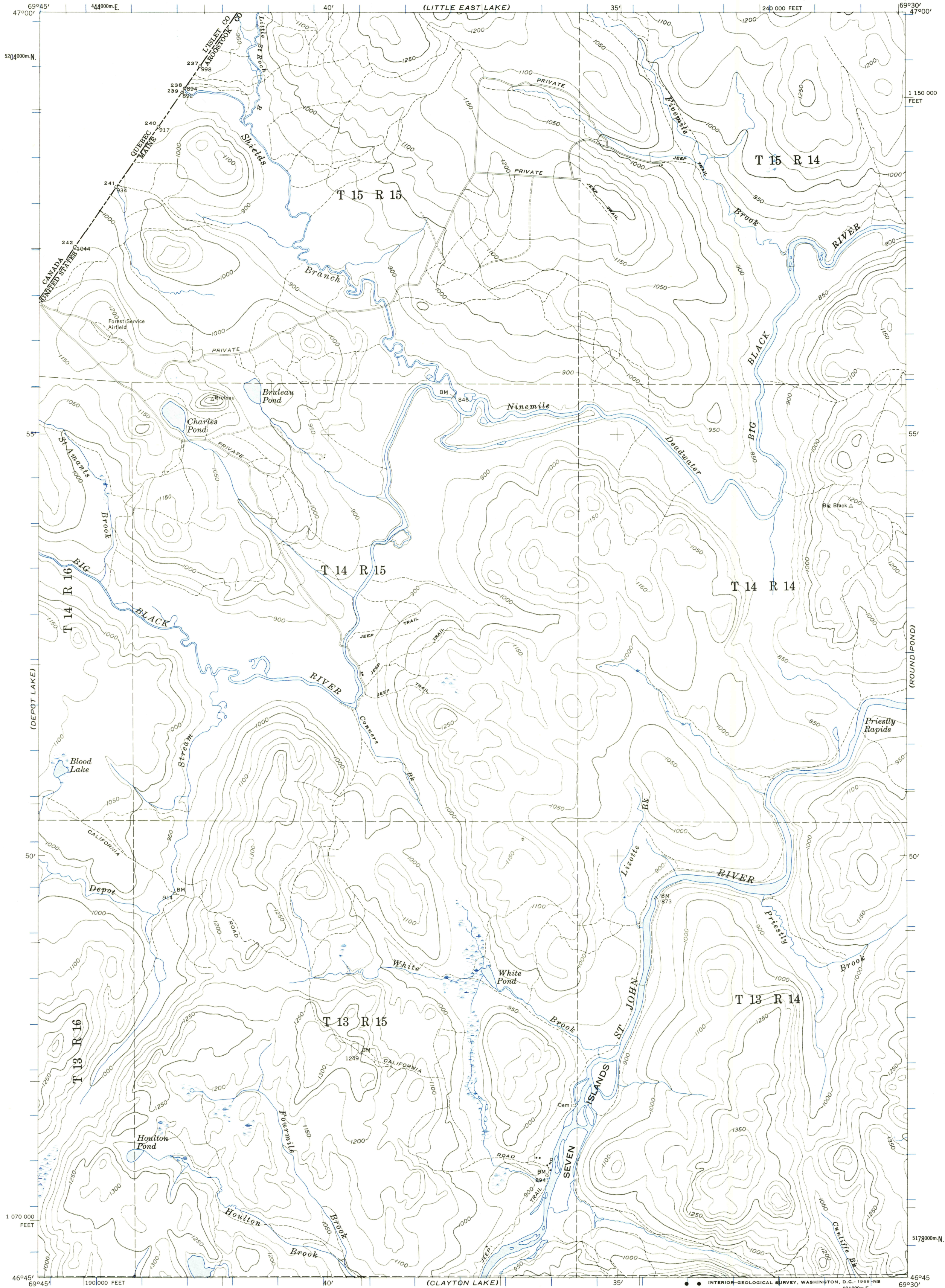


(ROCKY MOUNTAIN)



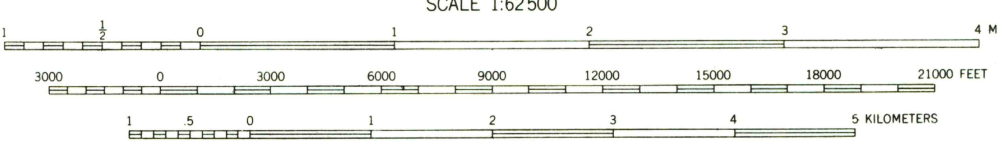
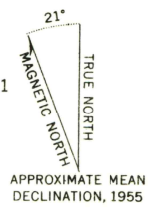
Mapped by the Army Map Service  
Edited and published for civil use  
by the Geological Survey

Control by USGS, USC&GS, and International  
Boundary Commission

Topography from aerial photographs by multiplex methods for  
the 1:250,000 scale publication. Aerial photographs taken 1951  
and 1952. Map field checked by the Geological Survey 1955

Polyconic projection. 1927 North American datum  
10,000-foot grid based on Maine coordinate system,  
east zone

1000-meter Universal Transverse Mercator grid ticks,  
zone 19, shown in blue



CONTOUR INTERVAL 50 FEET  
DATUM IS MEAN SEA LEVEL



ROAD CLASSIFICATION  
Improved  
Unimproved  
Trail

SEVEN ISLANDS, ME.  
N 4645—W 6930/15

1955

FOR SALE BY U. S. GEOLOGICAL SURVEY, WASHINGTON, D. C. 20242  
FOLDER DESCRIBING TOPOGRAPHIC MAPS AND SYMBOLS IS AVAILABLE ON REQUEST

(BEAVER POND)

(UMASKIS LAKE)

(CLAYTON LAKE)

INTERIOR-GEOLOGICAL SURVEY, WASHINGTON, D. C. 1969-NR  
461000m E.