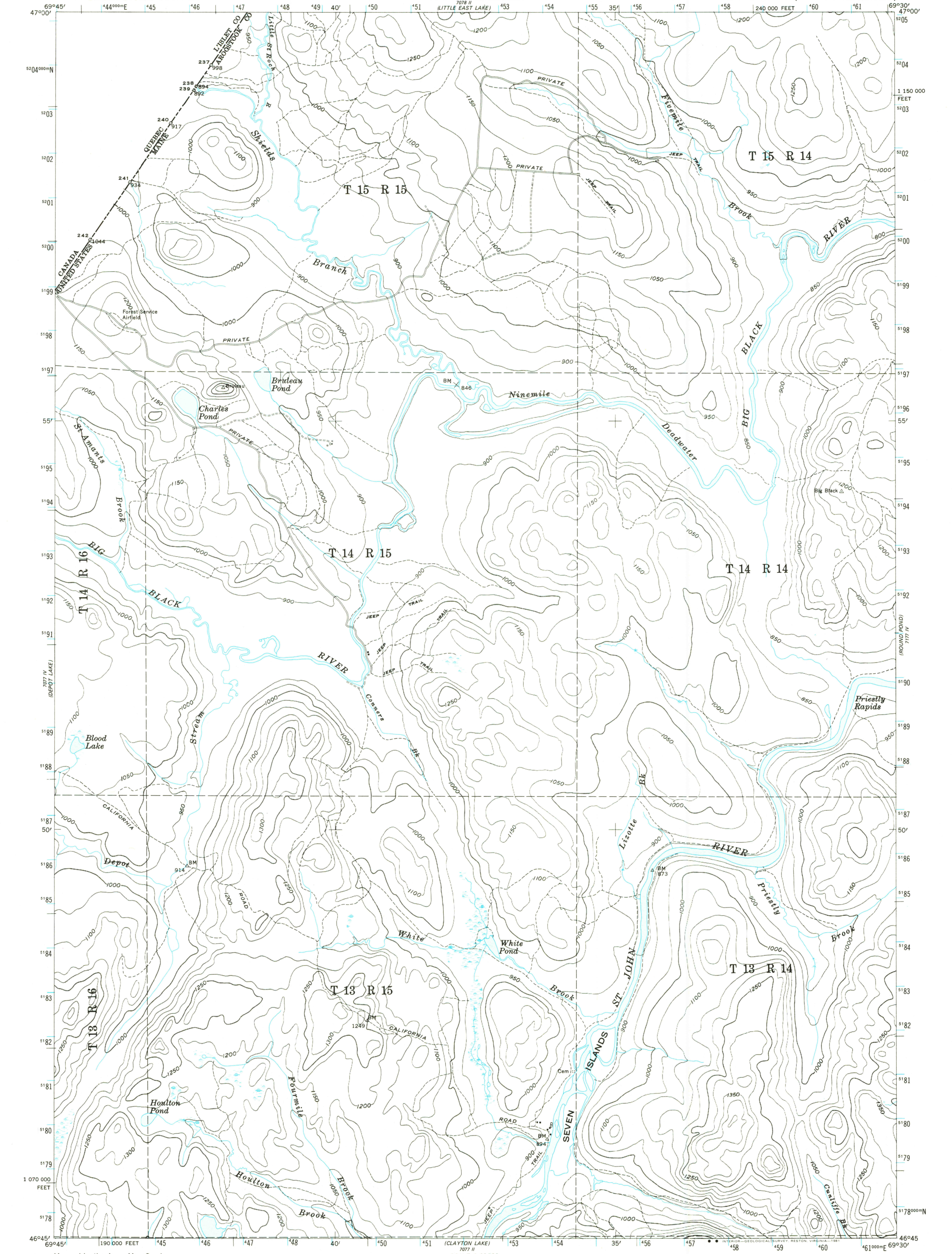


UNITED STATES  
DEPARTMENT OF THE INTERIOR  
GEOLOGICAL SURVEY

UNITED STATES  
DEPARTMENT OF THE ARMY  
CORPS OF ENGINEERS

SEVEN ISLANDS QUADRANGLE  
MAINE—ARROOSTOOK CO.  
15 MINUTE SERIES (PROVISIONAL EDITION)

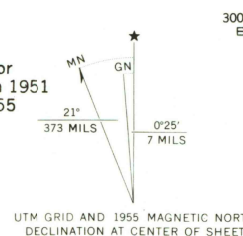


Map by the Army Map Service  
Edited and published for civil use  
by the Geological Survey

Control by USGS, USC&GS, and International  
Boundary Commission

Topography from aerial photographs by multiple methods for  
the 1:250 000 scale publication. Aerial photographs taken 1951  
and 1952. Map field checked by the Geological Survey 1955

Polycyclic projection. 10,000-foot grid ticks based  
on Maine coordinate system, east zone. 1000-meter  
Universal Transverse Mercator grid ticks, zone 19,  
shown in blue. 1927 North American Datum. To place  
on the predicted North American Datum 1983 move the  
projection lines 1 meter south and 39 meters west



CONTOUR INTERVAL 50 FEET  
NATIONAL GEODETIC VERTICAL DATUM OF 1929

FOR SALE BY U. S. GEOLOGICAL SURVEY, RESTON, VIRGINIA 22092  
FOLDER DESCRIBING TOPOGRAPHIC MAPS AND SYMBOLS IS AVAILABLE ON REQUEST

ROAD CLASSIFICATION  
Improved.....  
Unimproved.....  
Trail.....

SEVEN ISLANDS, MAINE  
N4645-W6930/15

1955

AMS 7077 I-SERIES V711