

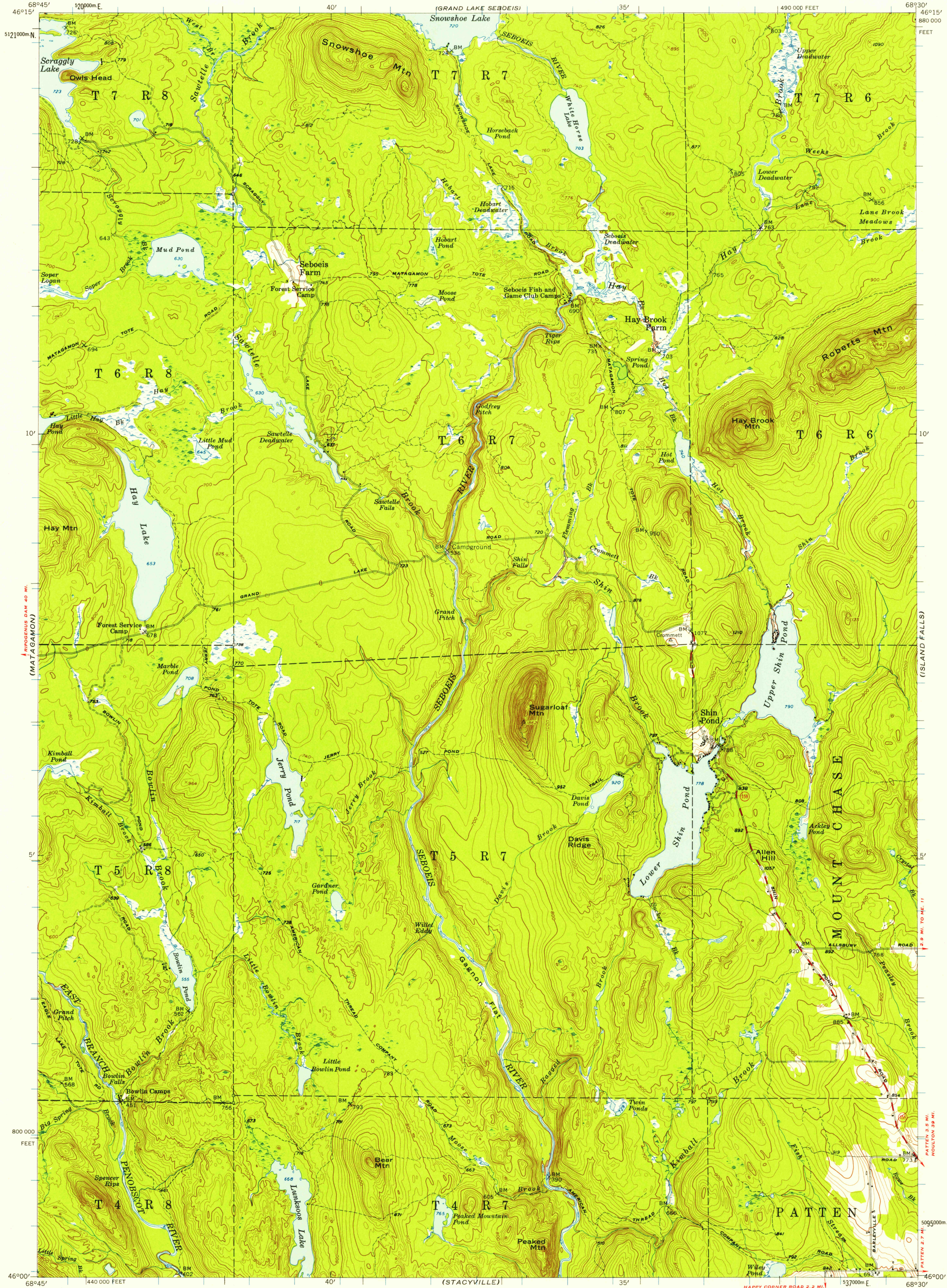
(MILLNOCKET LAKE)

UNITED STATES DEPARTMENT OF THE INTERIOR GEOLOGICAL SURVEY

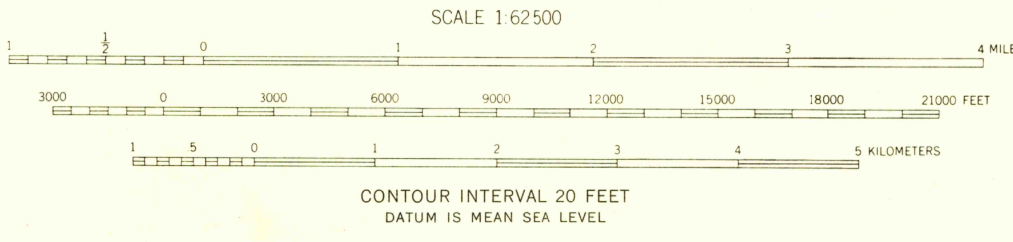
STATE OF MAINE PUBLIC UTILITIES COMMISSION

SHIN POND QUADRANGLE MAINE—PENOBSCOT CO. 15 MINUTE SERIES (TOPOGRAPHIC)

(OXBOW)



Mapped, edited, and published by the Geological Survey Control by USGS and USC&GS Topography from aerial photographs by multiplex methods Aerial photographs taken 1951 and 1953. Field check 1954 Polyconic projection. 1927 North American datum 10,000-foot grid based on Maine coordinate system, east zone Unchecked elevations are shown in brown 1000-meter Universal Transverse Mercator grid ticks, zone 19, shown in blue



ROAD CLASSIFICATION Heavy-duty, Medium-duty, Light-duty, Unimproved dirt, U.S. Route, State Route



SHIN POND, ME. N 4600—W 6830/15

1954

THIS MAP COMPLIES WITH NATIONAL MAP ACCURACY STANDARDS FOR SALE BY U.S. GEOLOGICAL SURVEY, WASHINGTON 25, D.C. A FOLDER DESCRIBING TOPOGRAPHIC MAPS AND SYMBOLS IS AVAILABLE ON REQUEST

U.S.G.S. FILE COPY TOPOGRAPHIC DIVISION

FEB 25 1958 5855