

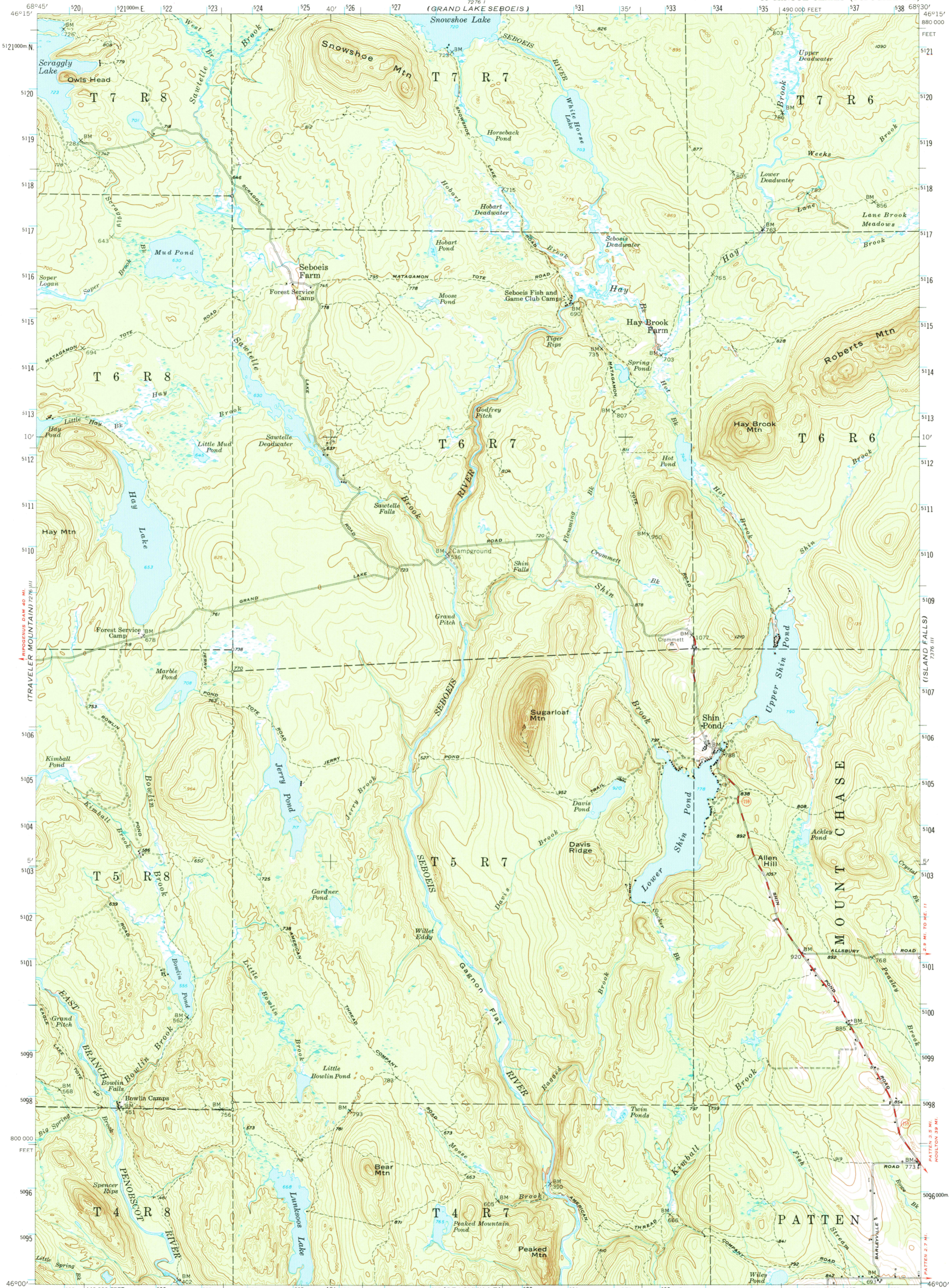
(MILLISPOCKET
7276 W)

UNITED STATES
DEPARTMENT OF THE INTERIOR
GEOLOGICAL SURVEY

STATE OF MAINE
PUBLIC UTILITIES COMMISSION
(GRAND LAKE SEBOEIS)

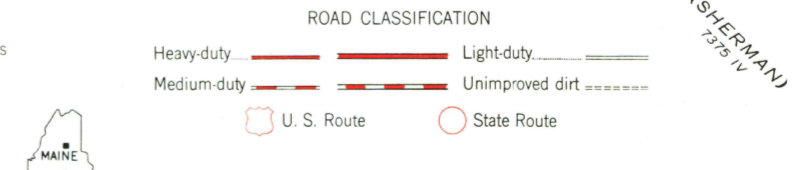
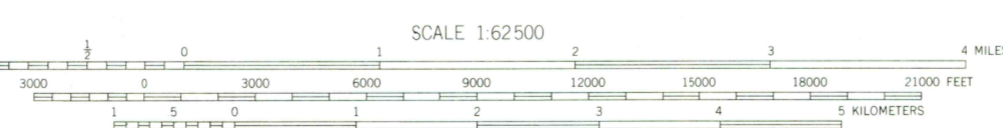
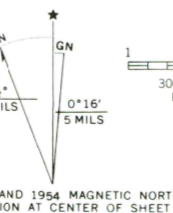
SHIN POND QUADRANGLE
MAINE-PENOBSCOT CO.
15 MINUTE SERIES (TOPOGRAPHIC)

(7276 N
OXBOW)



(KATAHDIN
7275 W)

Mapped, edited, and published by the Geological Survey
Control by USGS and USC&GS
Topography from aerial photographs by multiplex methods
Aerial photographs taken 1951 and 1953. Field check 1954
Polyconic projection. 1927 North American datum
10,000-foot grid based on Maine coordinate system,
east zone
Unchecked elevations are shown in brown
1000-meter Universal Transverse Mercator grid ticks,
zone 19, shown in blue



SHIN POND, ME.
N 4600-W 6830/15
1954
AMS 7276 II-SERIES V711

THIS MAP COMPLIES WITH NATIONAL MAP ACCURACY STANDARDS
FOR SALE BY U.S. GEOLOGICAL SURVEY, WASHINGTON, D. C. 20242
A FOLDER DESCRIBING TOPOGRAPHIC MAPS AND SYMBOLS IS AVAILABLE ON REQUEST

(SHEPHERN
7276 N)