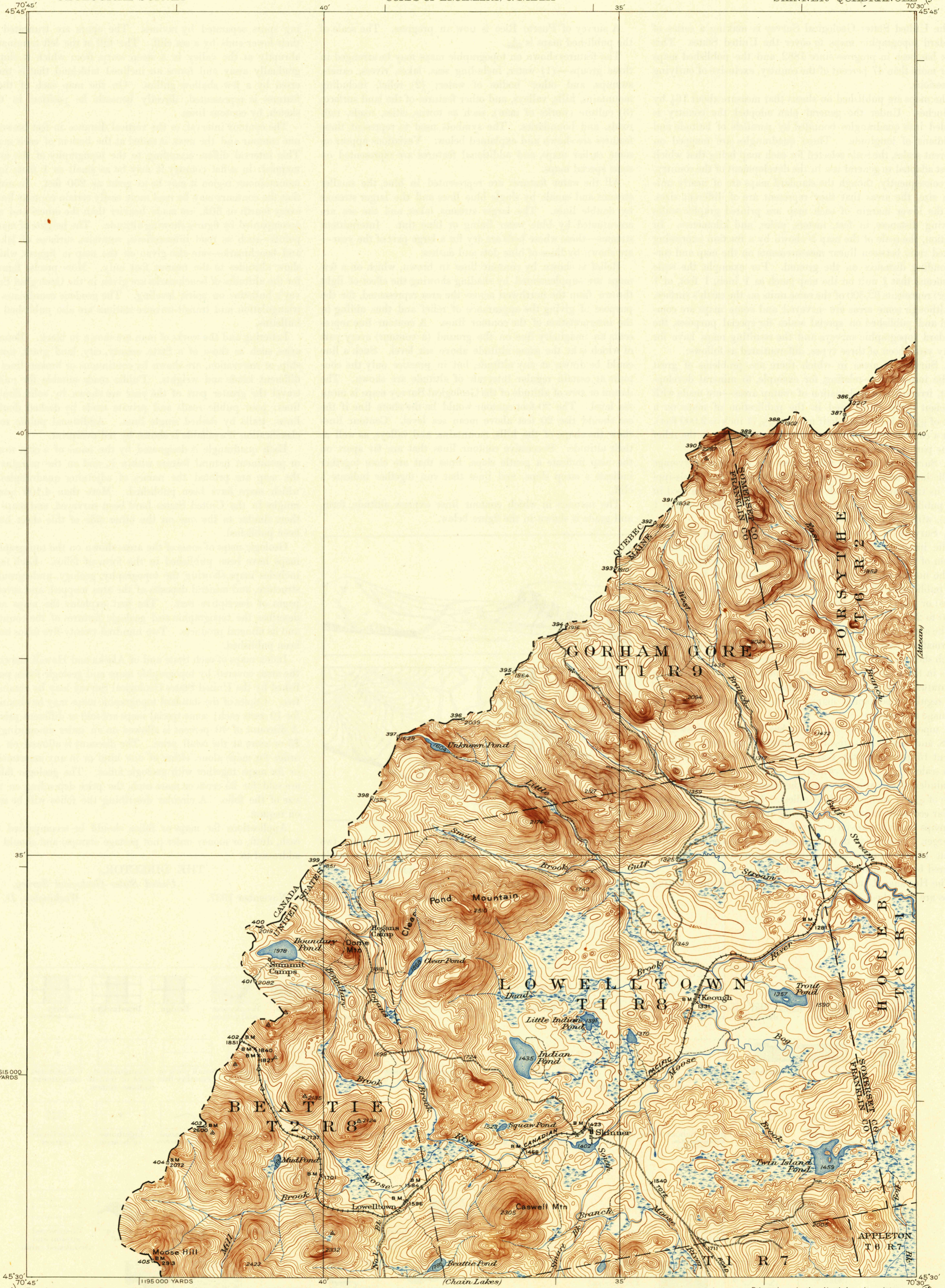


U.S.G.S.
FILE COPY
Inspection and Editing

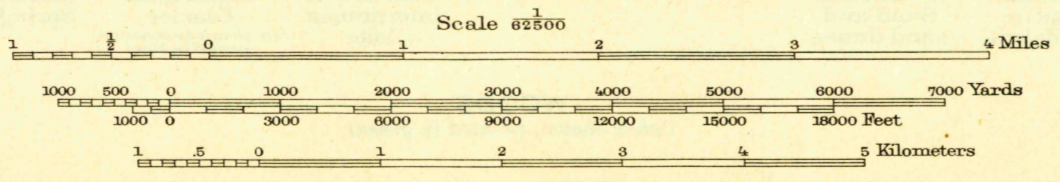
UNITED STATES
DEPARTMENT OF THE INTERIOR
GEOLOGICAL SURVEY

WAR DEPARTMENT
CORPS OF ENGINEERS, U.S. ARMY

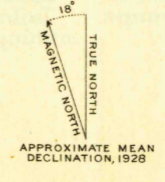
MAINE
SKINNER QUADRANGLE



Topography by R.H. Runyan, W.B. Brewer, Benj. Munroe, Jr., and International Boundary Commission Surveyed in 1928



Polyconic projection, North American datum
5000 yard grid based upon U.S. zone system, A



SKINNER, ME.
Edition of 1931
reprinted 1944
14630-W7039/5

U.S.G.S.
FILE COPY
Inspection and Editing