

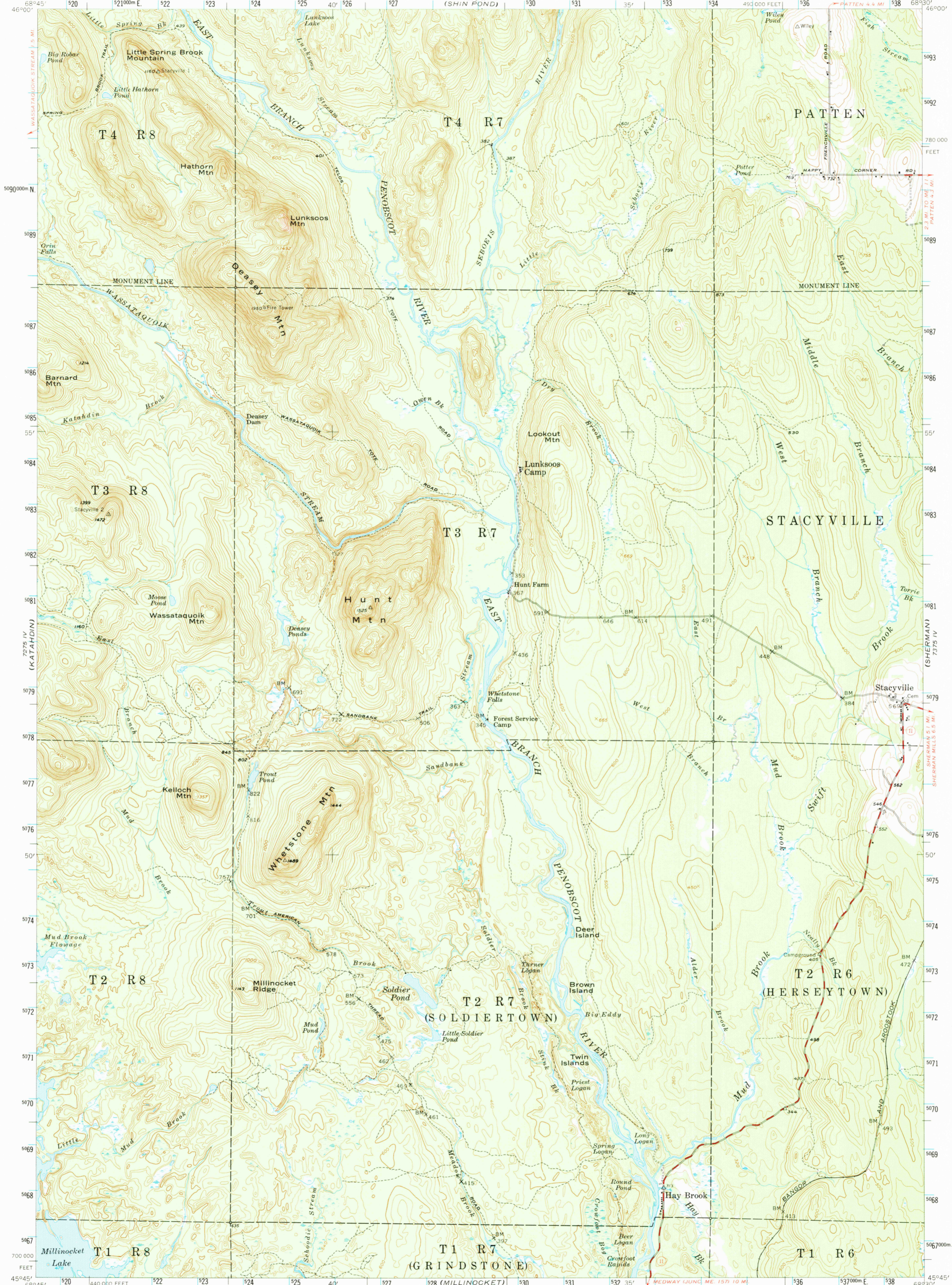
7275 III
(TRAVELER MOUNTAIN)

UNITED STATES
DEPARTMENT OF THE INTERIOR
GEOLOGICAL SURVEY

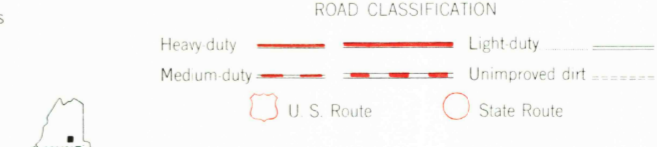
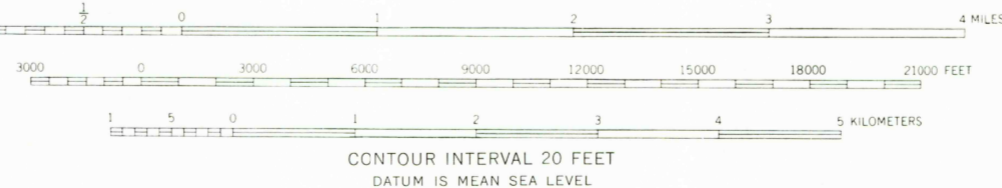
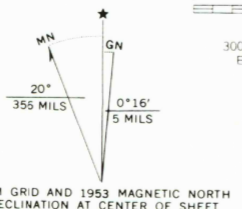
STATE OF MAINE
PUBLIC UTILITIES COMMISSION

STACYVILLE QUADRANGLE
MAINE—PENOBSCOT CO.
15 MINUTE SERIES (TOPOGRAPHIC)

7276 III
(ISLAND FALLS)



Mapped, edited, and published by the Geological Survey
Control by USGS and USC&GS
Topography from aerial photographs by multiplex methods
Aerial photographs taken 1951. Field check 1953
Polyconic projection. 1927 North American datum
10,000-foot grid based on Maine coordinate system,
east zone
Unchecked elevations are shown in brown
1000-meter Universal Transverse Mercator grid ticks,
zone 19, shown in blue



STACYVILLE, ME.
N 4545—W 6830/15

THIS MAP COMPLIES WITH NATIONAL MAP ACCURACY STANDARDS
FOR SALE BY U. S. GEOLOGICAL SURVEY, WASHINGTON, D. C. 20242
A FOLDER DESCRIBING TOPOGRAPHIC MAPS AND SYMBOLS IS AVAILABLE ON REQUEST

1953
AMS 7275 I—SERIES V711

(NORCROSS)
7275 III

(MATTAWAKEAG)
7275 III