

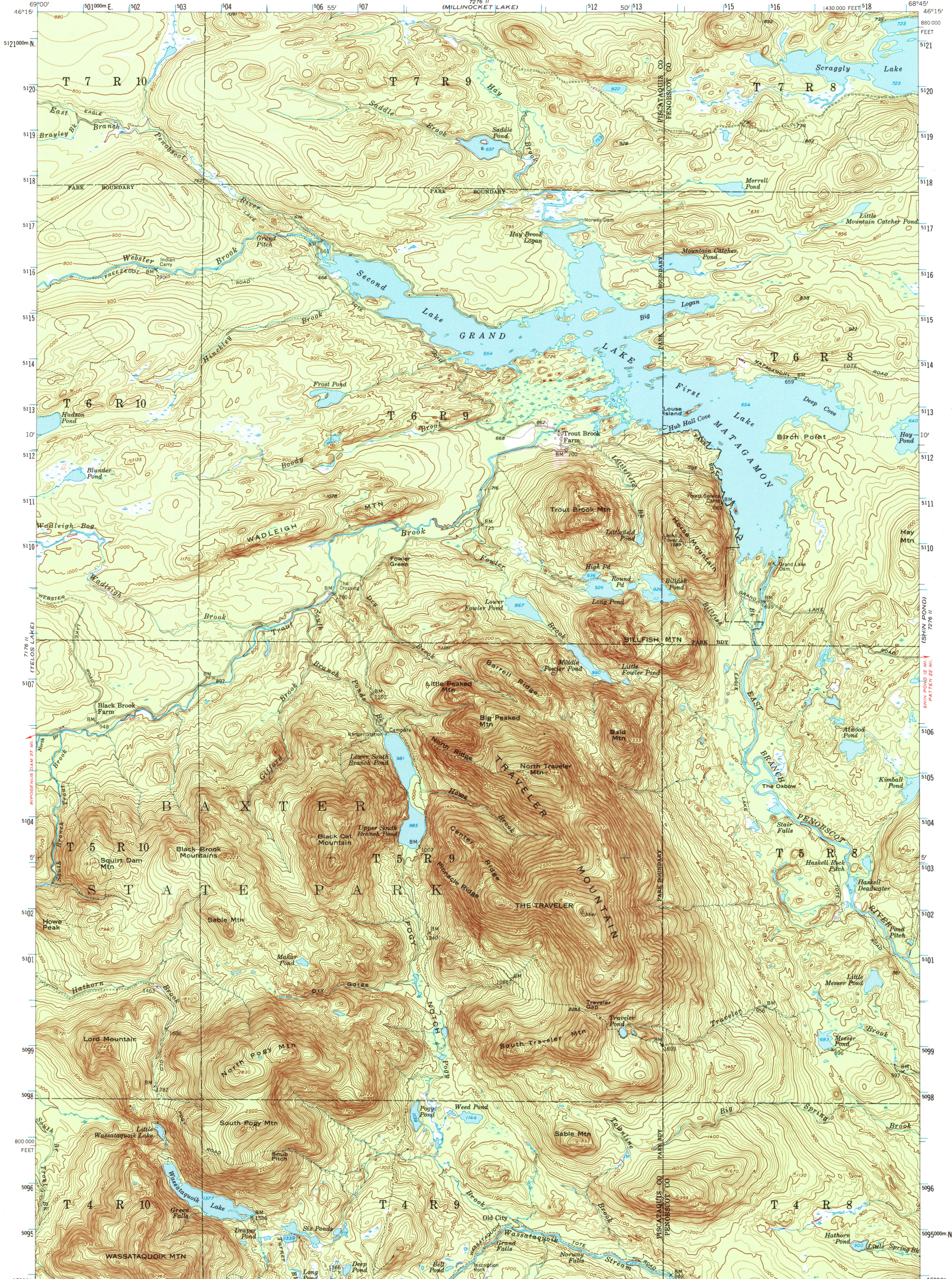
72°34' W
GRAND LAKE

UNITED STATES
DEPARTMENT OF THE INTERIOR
GEOLOGICAL SURVEY

STATE OF MAINE
PUBLIC UTILITIES COMMISSION
(MILLINOCKET LAKE)
72°34' W

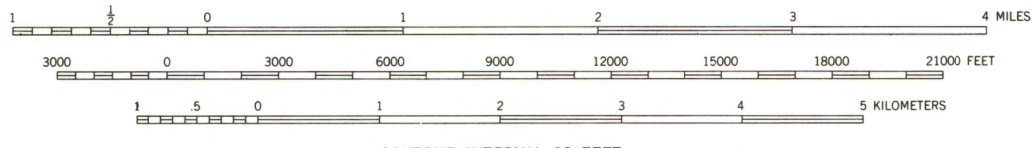
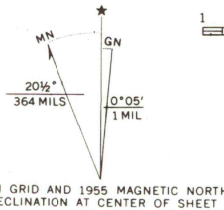
TRAVELER MOUNTAIN QUADRANGLE
MAINE
15 MINUTE SERIES (TOPOGRAPHIC)

72°34' W
GRAND LAKE SE50065



71°51' W
HARRINGTON LAKE

Mapped, edited, and published by the Geological Survey
Control by USGS and USC&GS
Topography from aerial photographs by multiplex methods
Aerial photographs taken 1951 and 1953. Field check 1955
Polyconic projection. 1927 North American datum
10,000-foot grid based on Maine coordinate system,
east zone
Unchecked elevations are shown in brown
1000-meter Universal Transverse Mercator grid ticks,
zone 19, shown in blue
To place on the predicted North American Datum 1983,
move the projection lines 1 meter south and 42 meters west



CONTOUR INTERVAL 20 FEET
NATIONAL GEODETIC VERTICAL DATUM OF 1929



ROAD CLASSIFICATION

Heavy-duty	Light-duty
Medium-duty	Unimproved dirt
U.S. Route	State Route

TRAVELER MOUNTAIN, ME.
46068-A7-TF-062
1955
DMA 7276 III-SERIES V711

THIS MAP COMPLIES WITH NATIONAL MAP ACCURACY STANDARDS
FOR SALE BY U.S. GEOLOGICAL SURVEY, DENVER, COLORADO 80225, OR RESTON, VIRGINIA 22092
A FOLDER DESCRIBING TOPOGRAPHIC MAPS AND SYMBOLS IS AVAILABLE ON REQUEST

72°34' W
GRAND LAKE SE50065