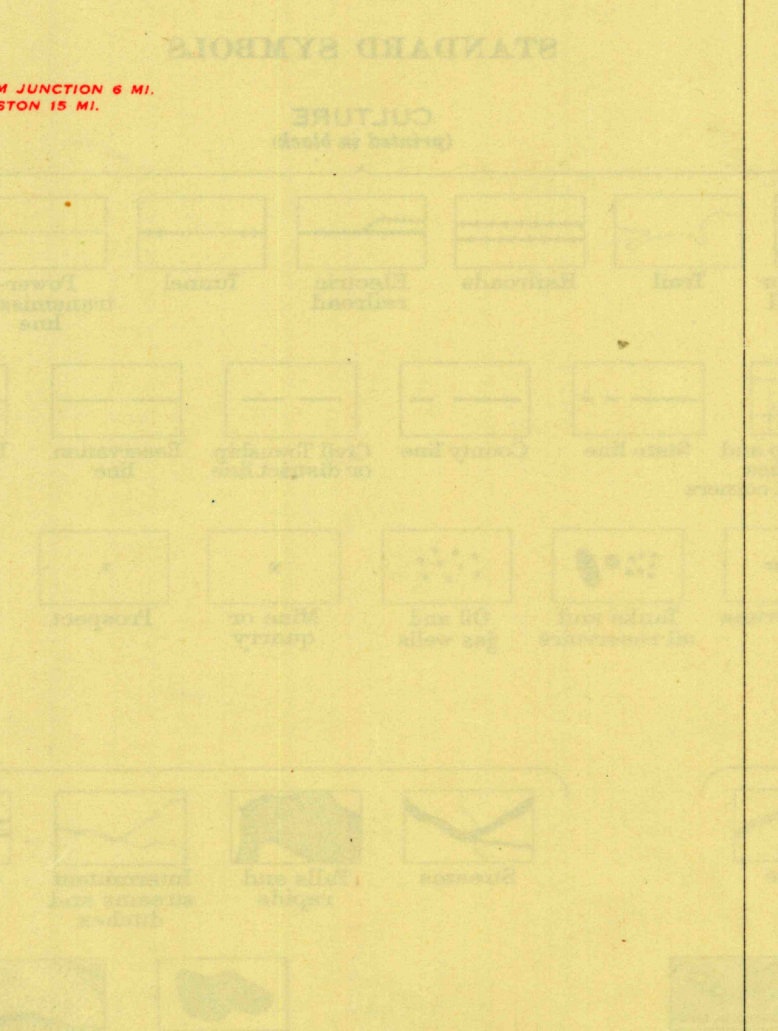
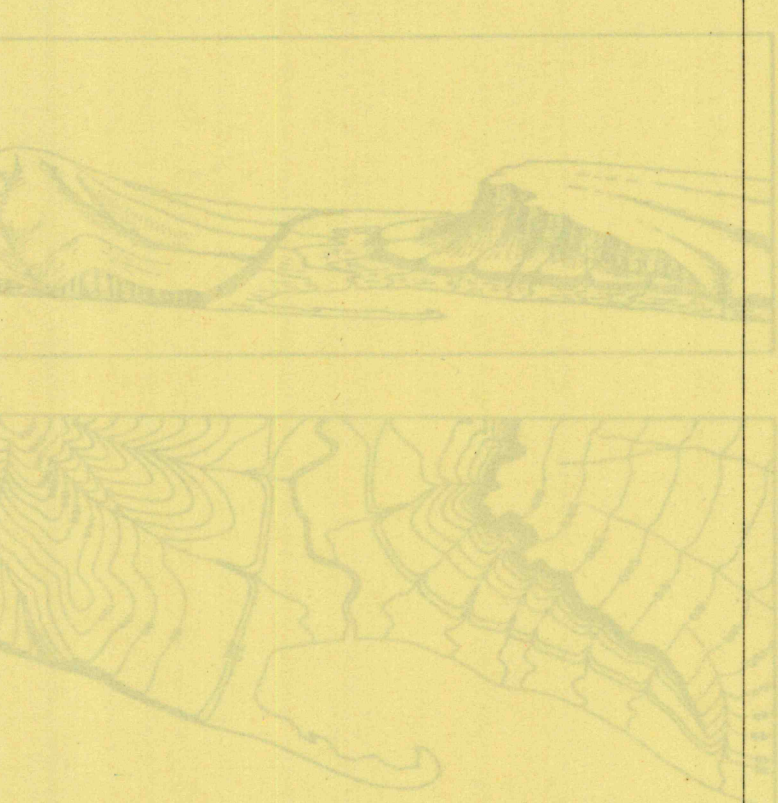
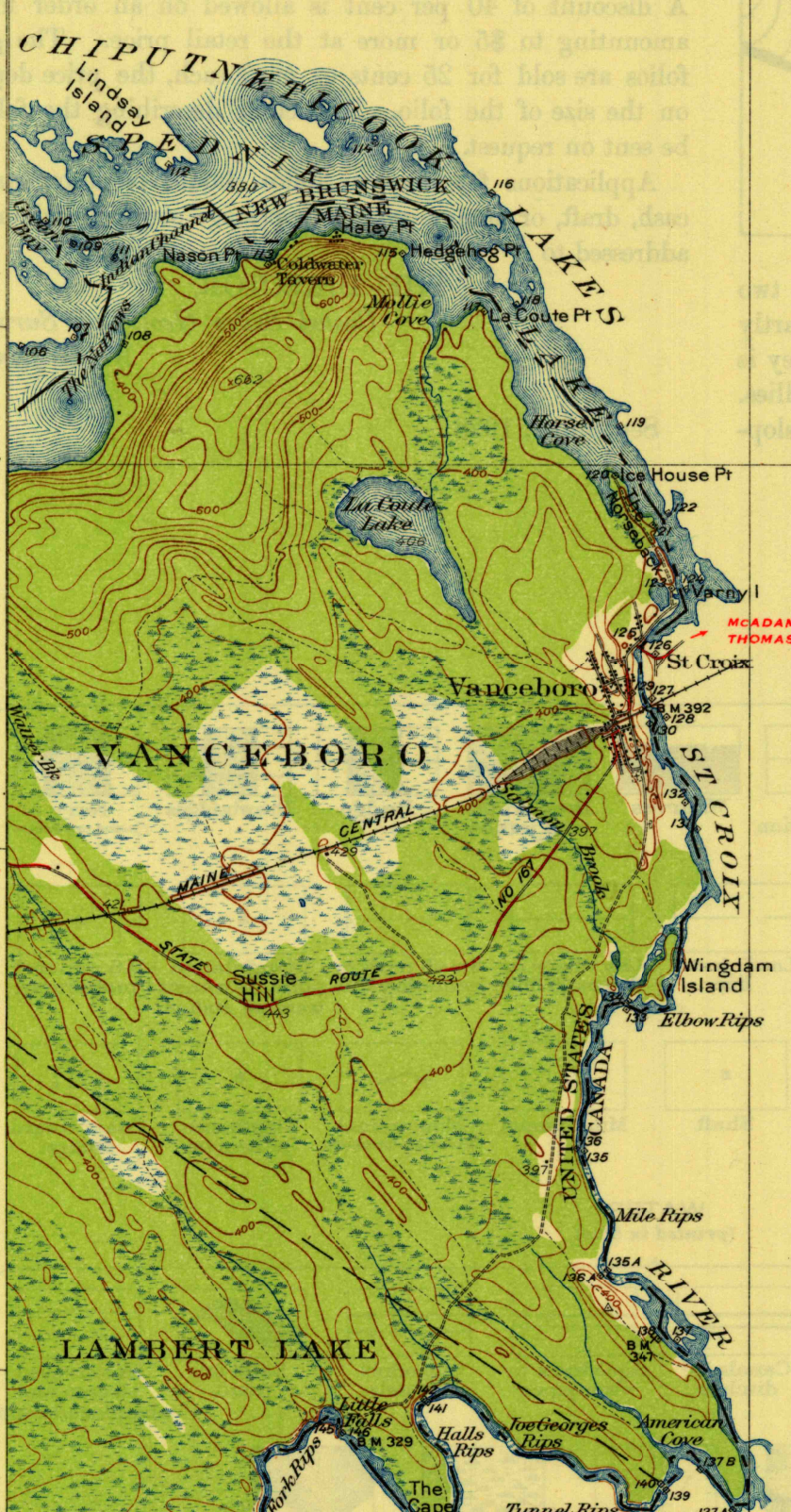


67°30' 25' 20' 67°15' 45°45' 45°30'

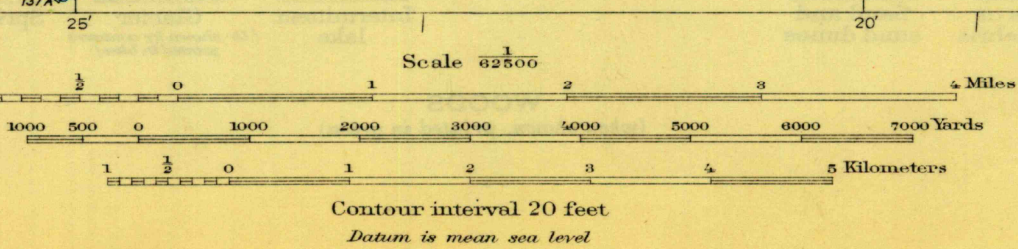
15 Miles
14
13
12
11
10
9
8
7
6
5
4
3
2
1
0
1
2
3
4
5
6
7
8
9
10
11
12
13
14
15 Miles

THE TOPOGRAPHIC MAPS OF THE UNITED STATES

The topographic map is a picture of the earth's surface as seen from a high altitude. It shows the shape of the land, the height of the mountains, the depth of the valleys, and the location of the water bodies. The map is made by a process called photogrammetry, which uses photographs taken from a high altitude to create a three-dimensional model of the terrain. This model is then projected onto a flat surface to create the topographic map. The map shows contour lines, which are lines of equal elevation. The contour interval is the vertical distance between two adjacent contour lines. In this map, the contour interval is 20 feet. The map also shows the location of the Vanceboro town, the Chiputnetcook Lakes, and the St. Croix River. The map is a part of the U.S. Geological Survey's topographic map series.



Topography by Olinus Smith and International Boundary Commission
Control by U.S. Coast and Geodetic Survey and
International Boundary Commission
Surveyed in 1930



HISTORICAL FILES

Polyconic projection, North American datum
5000 yard grid based upon U.S. ...
(DO NOT REMOVE)
HARD IMPERVIOUSLY SURFACED ...
OTHER MAIN TRAVELED ROADS
1932
VANCEBORO, ME.
Edition of 1933
2667:1500/49;