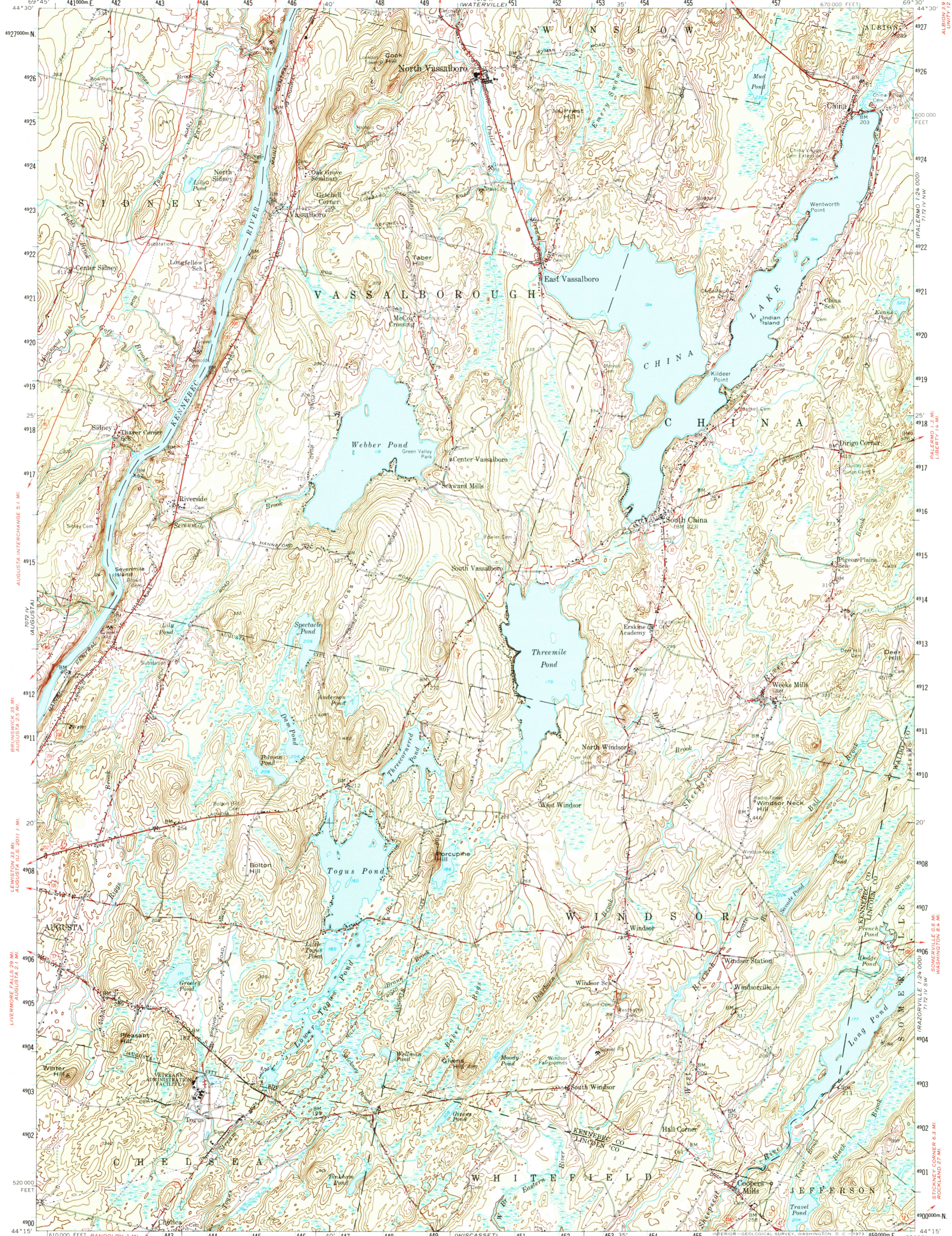
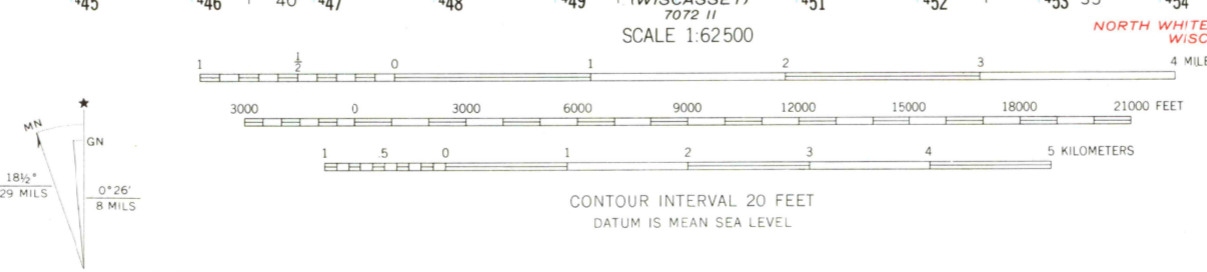


UNITED STATES
DEPARTMENT OF THE INTERIOR
GEOLOGICAL SURVEY

VASSALBORO QUADRANGLE
MAINE
15 MINUTE SERIES (TOPOGRAPHIC)



Mapped, edited, and published by the Geological Survey
Control by USGS and USC&GS
Culture and drainage in part compiled from aerial photographs taken 1940. Topography by planetable surveys 1941
Revised 1956
Polyconic projection. 1927 North American datum
10,000-foot grid based on Maine coordinate system, west zone
1000-meter Universal Transverse Mercator grid ticks, zone 19, shown in blue



ROAD CLASSIFICATION
1964
Heavy-duty ——— Light-duty ———
Medium-duty ——— Unimproved dirt ———
Interstate Route ——— U.S. Route ——— State Route ———

UTM GRID AND 1956 MAGNETIC NORTH DECLINATION AT CENTER OF SHEET
18 1/2° 32' N
07° 26' 8" MILES

QUADRANGLE LOCATION
MAINE

VASSALBORO, ME.
N4415—W6930/15
1956
AMS 7072 I—SERIES V711

THIS MAP COMPLIES WITH NATIONAL MAP ACCURACY STANDARDS
FOR SALE BY U.S. GEOLOGICAL SURVEY, WASHINGTON, D. C. 20242
A FOLDER DESCRIBING TOPOGRAPHIC MAPS AND SYMBOLS IS AVAILABLE ON REQUEST