

BAY CITY, MICHIGAN

30 X 60 MINUTE SERIES (PLANIMETRIC)

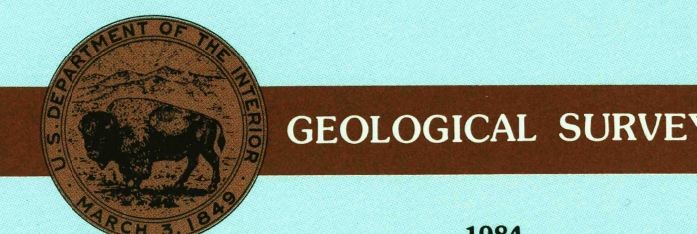
Bay City MICHIGAN

1:100 000-scale planimetric map



30 X 60 MINUTE QUADRANGLE SHOWING

- Elevations in meters
- Highways, roads and other manmade structures
- Water features
- Wetland areas
- Geographic names



GEOLOGICAL SURVEY

1984

Produced by the United States Geological Survey
 Compiled from USGS 1:24 000 and 1:62 500-scale topographic maps dated 1963-1973. Planimetry revised from aerial photographs taken 1982 and other source data. Revised information not field checked. Map edited 1984.
 Projection and 10 000-meter grid, zone 17, Universal Transverse Mercator
 To place on the predicted North American Datum 1983, move the projection lines 1 meter north and 5 meters west
 There may be private inholdings within the boundaries of the National or State reservations shown on this map

NATIONAL GEODETIC VERTICAL DATUM OF 1929
 ELEVATIONS SHOWN TO THE NEAREST METER

THIS MAP COMPLIES WITH NATIONAL MAP ACCURACY STANDARDS

CONVERSION TABLE		DECLINATION DIAGRAM		ADJOINING MAPS	
Meters	Feet			1	2
2	6 561			3	4
3	9 842			5	6
4	13 124			7	8
5	16 405				
6	19 686				
7	22 968				
8	26 249				
9	29 530				
10	32 811				

To convert meters to feet multiply by 3.2808
 To convert feet to meters multiply by 0.3048

UTM grid convergence (GN) and 1983 magnetic declination (MN) at center of map
 Diagram is approximate

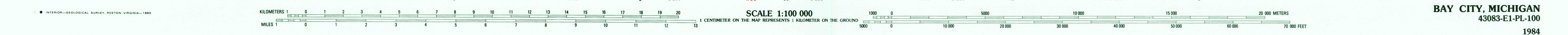
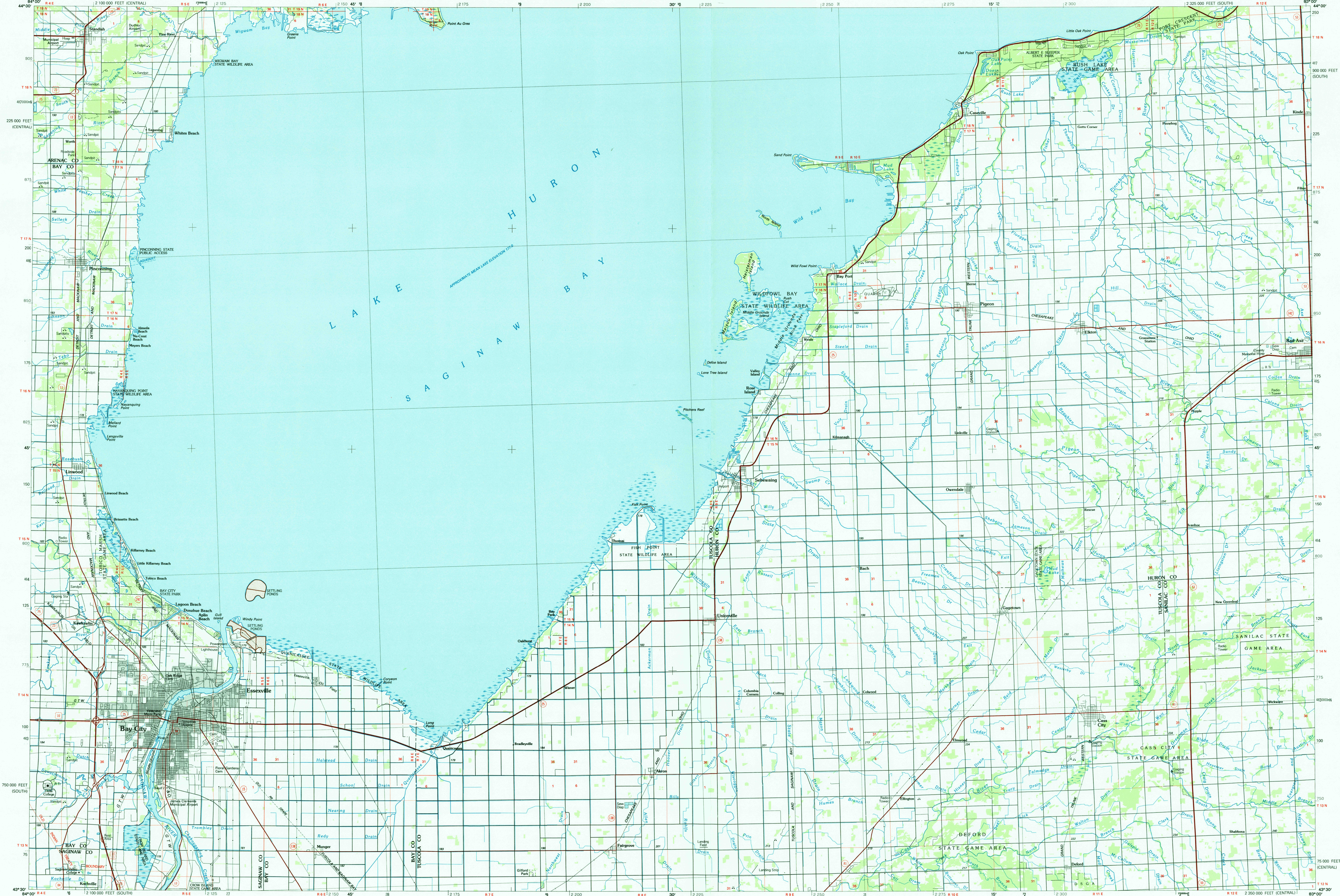
1	Houghton Lake
2	Tawas City
3	Pointe Aux Barques
4	Midland
5	Harbor Beach
6	Alma
7	Flint
8	Crowell

FOR SALE BY U. S. GEOLOGICAL SURVEY
 RESTON, VIRGINIA 22092

Topographic Map Symbols

- Primary highway, hard surface
- Secondary highway, hard surface
- Light duty road, principal street, hard or improved surface
- Other road or street; trail
- Route marker: Interstate, U.S. State
- Railroad: standard gage; narrow gage
- Bridge: overpass; underpass
- Tunnel road; railroad
- Built up area: locality; elevation
- Airport: landing field; landing strip
- National boundary
- State boundary
- County boundary
- National or State reservation boundary
- Land grant boundary
- U.S. public lands survey: range, township; section
- Range, township; section line: protected
- Power transmission line; pipeline
- Dam; dam with lock
- Cemetery; building
- Well; water well; spring
- Mine shaft; adit or cave; mine; quarry; gravel pit
- Campground; picnic area; U.S. location monument
- Ruins; cliff dwelling
- Distorted surface: strip mine, lava, sand
- Contours: index; intermediate; supplementary
- Bathymetric contours: index; intermediate
- Stream, lake; perennial; intermittent
- Rapids, large and small; falls, large and small
- Area to be submerged; marsh, swamp
- Land subject to controlled inundation; woodland
- Scrub; mangrove
- Orchard; vineyard

A pamphlet describing topographic maps is available on request



BAY CITY, MICHIGAN
 43083-E1-PL-100
 1984