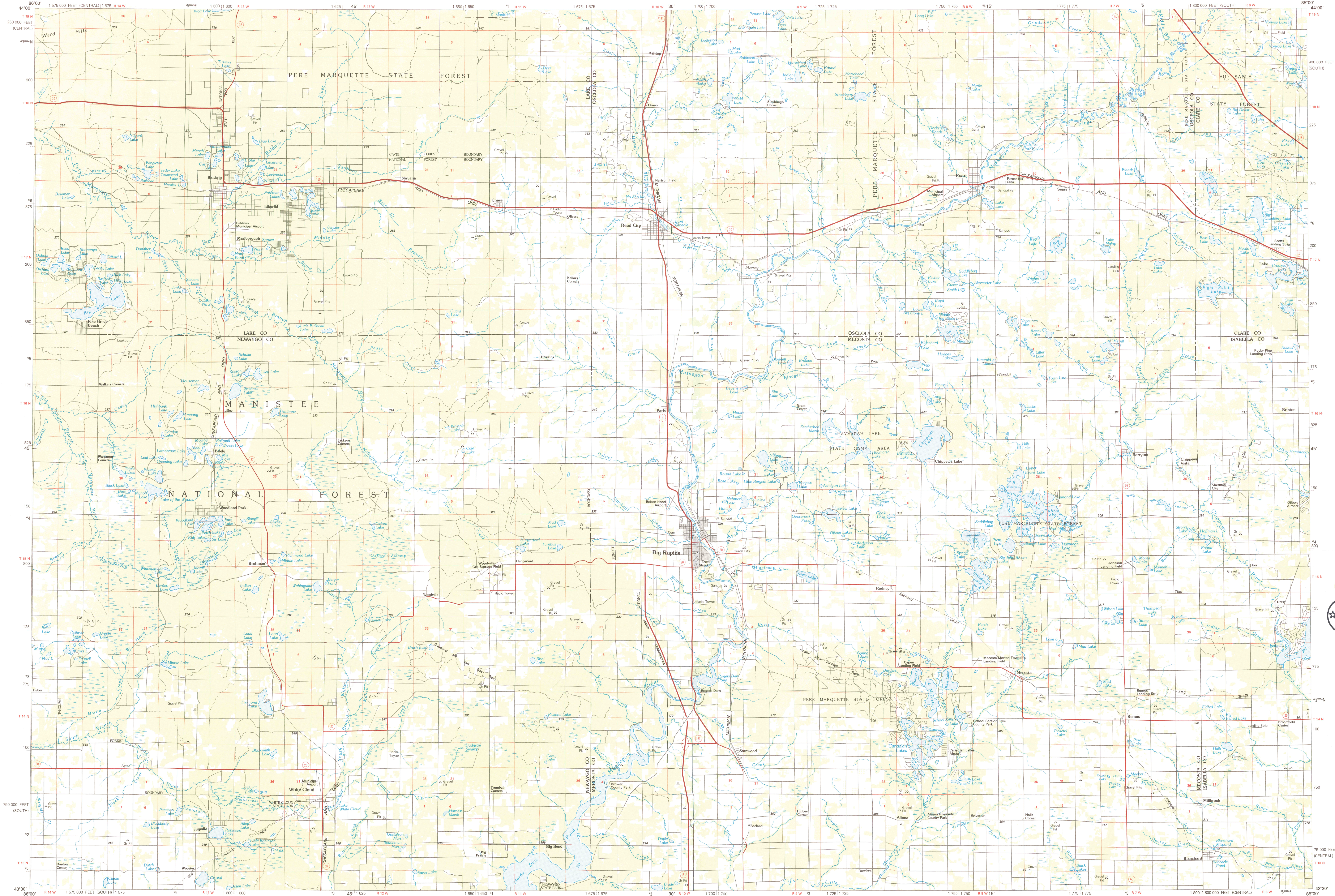


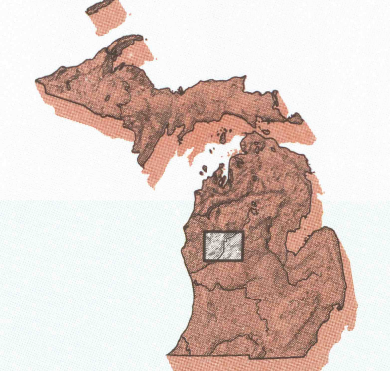
BIG RAPIDS, MICHIGAN

30 X 60 MINUTE SERIES (PLANIMETRIC)



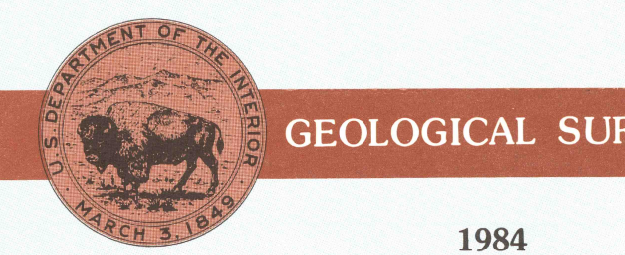
Big Rapids MICHIGAN

1:100 000-scale planimetric map



30 X 60 MINUTE QUADRANGLE SHOWING

- Elevations in meters
- Highways, roads and other manmade structures
- Water features
- Woodland areas
- Geographic names



Produced by the United States Geological Survey
 Compiled from USGS 1:24 000 and 1:62 500-scale topographic maps dated 1958-1984. Planimetry revised from aerial photographs taken 1983 and other source data. Revised information not field checked. Map edited 1984.
 Projection and 10 000-meter grid, zone 16, Universal Transverse Mercator
 To place on the predicted North American Datum 1983, move the projection lines 1 meter north and 1 meter east
 There may be private inholdings within the boundaries of the National or State reservations shown on this map

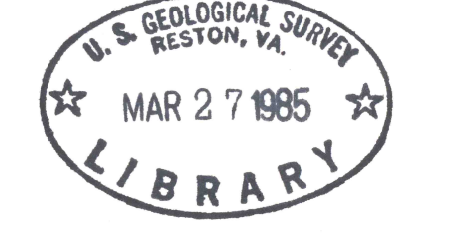
NATIONAL GEODETIC VERTICAL DATUM OF 1929 ELEVATIONS SHOWN TO THE NEAREST METER

THIS MAP COMPLIES WITH NATIONAL MAP ACCURACY STANDARDS

Meters	Feet
1	3.2808
2	6.5617
3	9.8425
4	13.1234
5	16.4042
6	19.6850
7	22.9659
8	26.2467
9	29.5276
10	32.8084

To convert meters to feet multiply by 3.2808
 To convert feet to meters multiply by 0.3048

FOR SALE BY U.S. GEOLOGICAL SURVEY RESTON, VIRGINIA 22092



Topographic Map Symbols

- Primary highway, hard surface
- Secondary highway, hard surface
- Light duty road, principal street, hard or improved surface
- Other road or street, trail
- Route marker: Interstate, U.S., State
- Railroad: standard gage, narrow gage
- Bridge, overpass, underpass
- Tunnel: road, railroad
- Built up area: locality, elevation
- Airport: landing field, landing strip
- National boundary
- State boundary
- County boundary
- National or State reservation boundary
- Land grant boundary
- U.S. public lands survey: range, township, section
- Range, township, section line: projected
- Power transmission line, pipeline
- Dam: dam with lock
- Cemetery, building
- Windmill; water well; spring
- Mine shaft; adit or cave; mine, quarry; gravel pit
- Campground; picnic area; U.S. location monument
- Ruin, cliff dwelling
- Disturbed surface: strip mine, lava, sand
- Contours: index, intermediate, supplementary
- Bathymetric contours: index, intermediate
- Stream, lake: perennial, intermittent
- Rapids, large and small; falls, large and small
- Area to be submerged: marsh, swamp
- Land subject to controlled inundation, woodland
- Scrub, mangrove
- Orchard; vineyard