

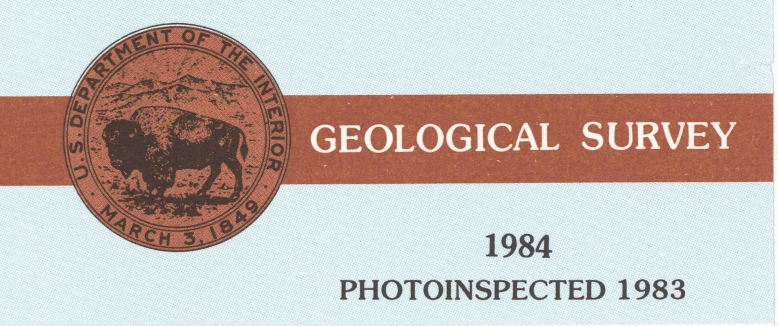
Midland MICHIGAN

1:100 000-scale metric topographic map



30 X 60 MINUTE QUADRANGLE SHOWING

- Contours and elevations in meters
- Highways, roads and other manmade structures
- Water features
- Woodland areas
- Geographic names



1984 PHOTINSPECTED 1983

Produced by the United States Geological Survey
 Compiled from USGS 1:24 000 and 1:25 000-scale topographic maps dated 1962-1983. Planimetry revised from aerial photographs taken 1981 and other source data. Revised information not field checked. Map edited 1984.
 Projection and 10 000-meter grid, zone 16, Universal Transverse Mercator
 25 000-foot grid ticks based on Michigan coordinate system, south and central zones
 1927 North American Datum
 To place on the predicted North American datum 1983, move the projection lines 1 meter north and 2 meters west
 There may be private inholdings within the boundaries of the National or State reservations shown on this map
 Map photocopied using 1982-83 photographs
 No major culture or drainage changes found
 CONTOUR INTERVAL 10 METERS
 NATIONAL GEODETIC VERTICAL DATUM OF 1929
 ELEVATIONS SHOWN TO THE NEAREST METER

THIS MAP COMPLIES WITH NATIONAL MAP ACCURACY STANDARDS

CONVERSION TABLE		DECLINATION DIAGRAM		ADJOINING MAPS		
Meters	Feet	Magnetic Declination		1	2	3
1	3.2808	Magnetic declination 1983		4	5	6
2	6.5617	at center of map		7	8	9
3	9.8425	Diagram is approximate		10	11	12
4	13.1234			13	14	15
5	16.4042			16	17	18
6	19.6850			19	20	21
7	22.9659			22	23	24
8	26.2467			25	26	27
9	29.5275			28	29	30
10	32.8084			31	32	33

FOR SALE BY U.S. GEOLOGICAL SURVEY DENVER, COLORADO 80225, OR RESTON, VIRGINIA 22092

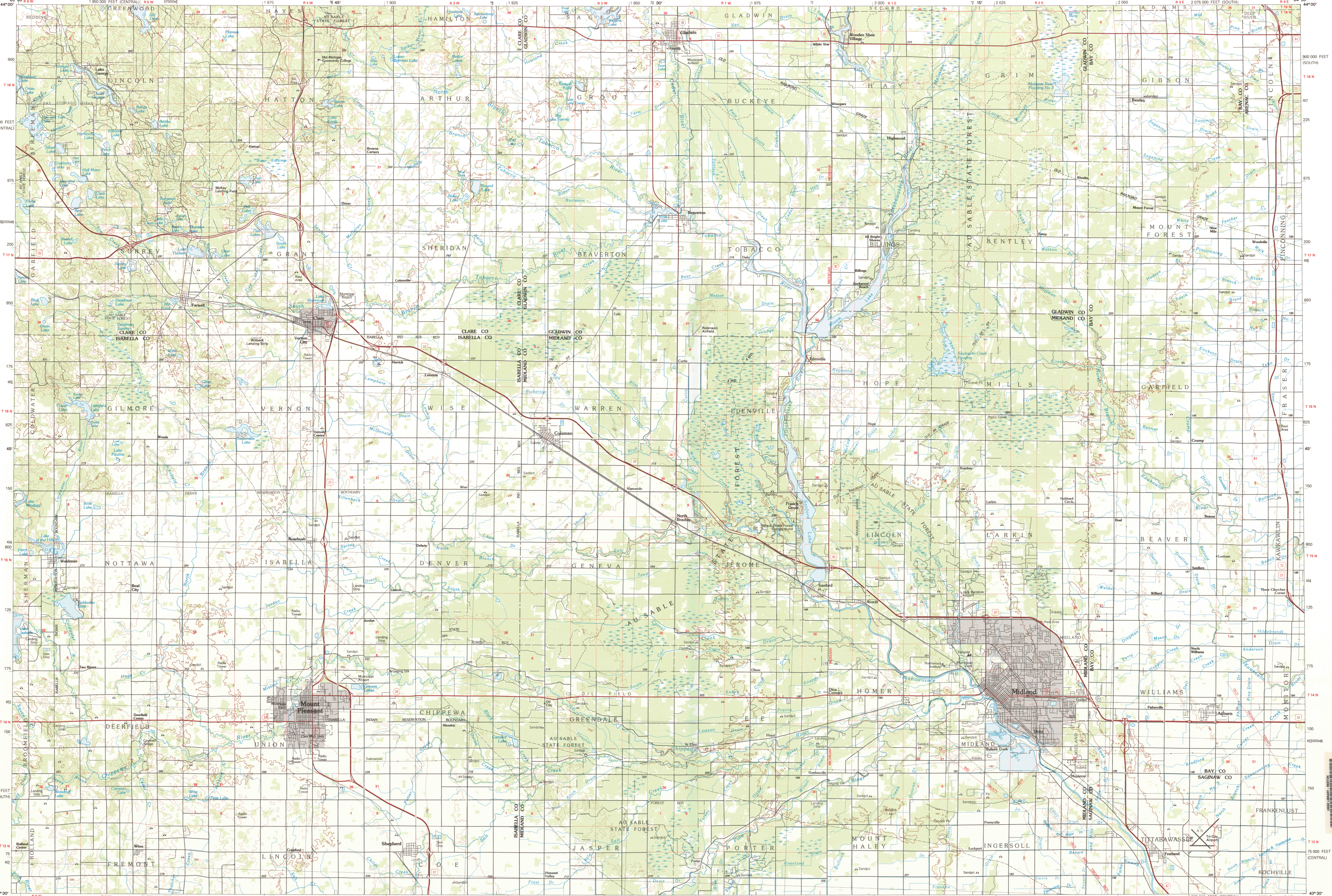
Topographic Map Symbols

- Primary highway, hard surface
- Secondary highway, hard surface
- Light duty road, principal street, hard or improved surface
- Other road or street; trail
- Route marker, interstate; U.S. State
- Railroad; standard gage; narrow gage
- Bridge; overpass; underpass
- Tunnel; road; railroad
- Built up area, locality, elevation
- Airport; landing field; landing strip
- National boundary
- State boundary
- County boundary
- National or State reservation boundary
- Land grant boundary
- U.S. public lands survey; range, township, section
- Range, township, section line; retracted
- Power transmission line; pipeline
- Dam; dam with lock
- Cemetery; building
- Wellhead; water well; spring
- Mine shaft; adit or cave; mine; quarry; gravel pit
- Campground; picnic area; U.S. location monument
- Ruin; cliff dwelling
- Distorted surface; strip mine, lava, sand
- Contours; index, intermediate, supplementary
- Bathymetric contours; index, intermediate
- Stream, lake; perennial, intermittent
- Rapids, large and small; falls, large and small
- Area to be submerged; marsh, swamp
- Land subject to controlled inundation; woodland
- Straw; mangrove
- Orchard; vineyard

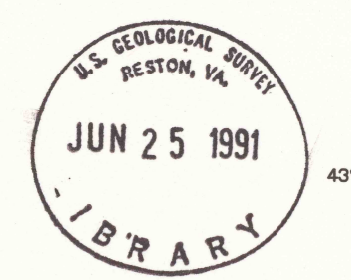
A pamphlet describing topographic maps is available on request

UStopo 1:100,000 Midland, MI 1989 c1

MIDLAND, MICHIGAN 30 X 60 MINUTE SERIES (TOPOGRAPHIC)



SCALE 1:100 000
 1 CENTIMETER ON THE MAP REPRESENTS 1 KILOMETER ON THE GROUND
 CONTOUR INTERVAL 10 METERS



INTERIOR - GEOLOGICAL SURVEY, RESTON, VIRGINIA - 1989

MIDLAND, MICHIGAN 43084-E1-TM-100 1984 PHOTINSPECTED 1983