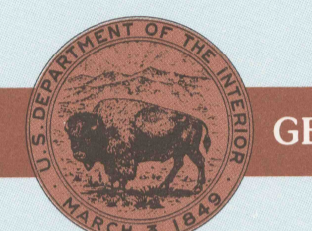




30 X 60 MINUTE QUADRANGLE SHOWING

- Elevations in meters
- Highways, roads and other manmade structures
- Water features
- Woodland areas
- Geographic names



GEOLOGICAL SURVEY

1984

Produced by the United States Geological Survey
 Compiled from USGS 1:24 000 and 1:25 000-scale topographic maps dated 1962-1983. Planimetry revised from aerial photographs taken 1981 and other source data. Revised information not field checked. May edited 1984.
 Projection and 10 000-meter grid, zone 16, Universal Transverse Mercator
 25 000-foot grid ticks based on Michigan coordinate system, south and central zones
 1927 North American Datum
 To place on the predicted North American Datum 1983, move the projection lines 1 meter north and 2 meters west
 There may be private landholdings within the boundaries of the National or State reservations shown on this map

NATIONAL GEODETIC VERTICAL DATUM OF 1929

ELEVATIONS SHOWN TO THE NEAREST METER

THIS MAP COMPLES WITH NATIONAL MAP ACCURACY STANDARDS

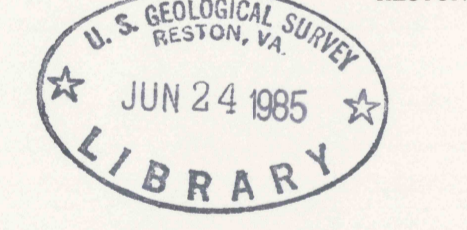
Meters	Feet
1	3.2808
2	6.5617
3	9.8425
4	13.1234
5	16.4042
6	19.6850
7	22.9659
8	26.2467
9	29.5276
10	32.8084

To convert meters to feet multiply by 3.2808
 To convert feet to meters multiply by 0.3048

ADJOINING MAPS	1	2	3
1	1	2	3
2	4	5	6
3	7	8	9
4	10	11	12
5	13	14	15
6	16	17	18
7	19	20	21
8	22	23	24

1 Cadillac
 2 Houghton Lake
 3 Tawas City
 4 Big Rapids
 5 Bay City
 6 Cedar Springs
 7 Alton
 8 Flint

FOR SALE BY U.S. GEOLOGICAL SURVEY RESTON, VIRGINIA 22092



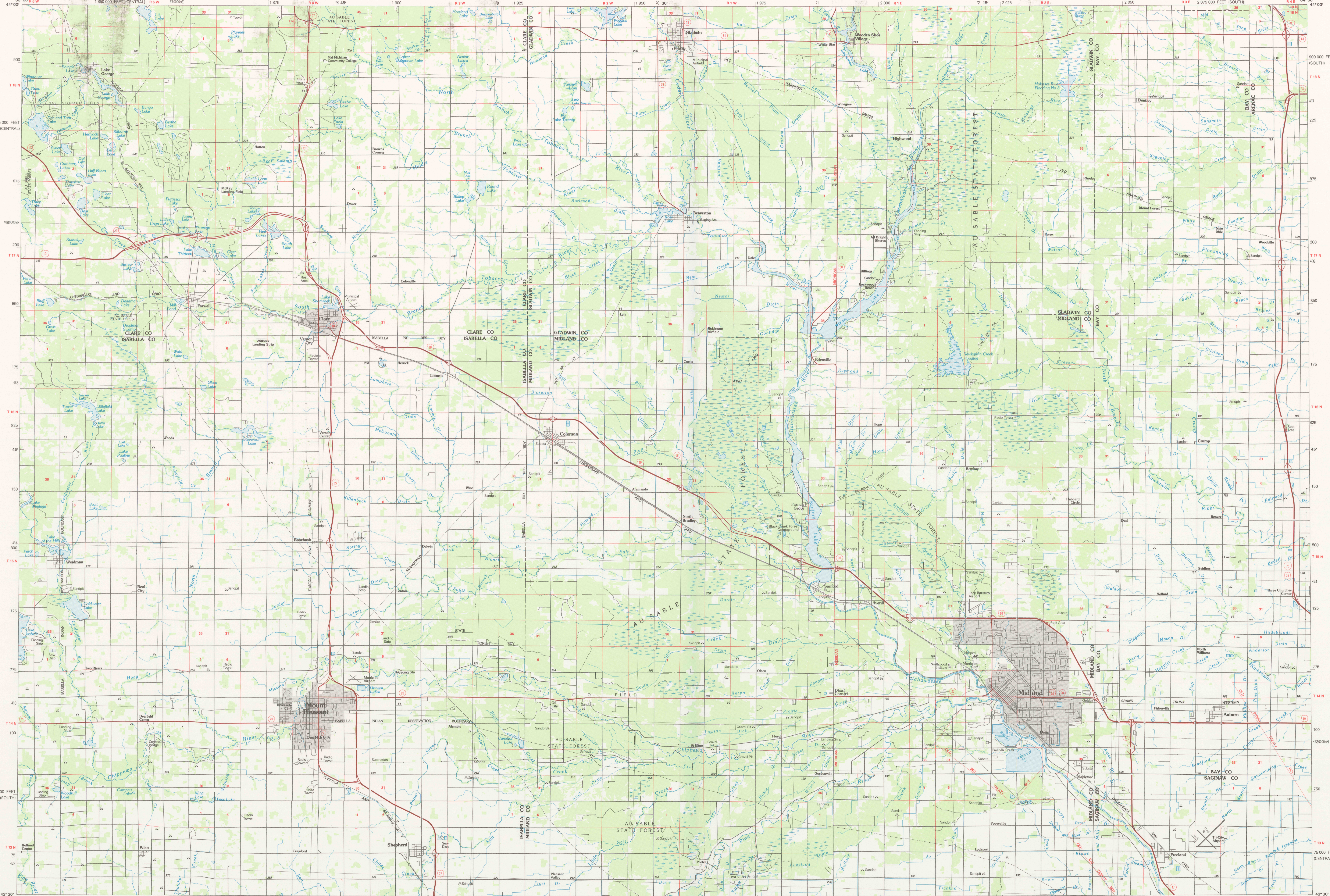
Topographic Map Symbols

- Primary highway, hard surface
- Secondary highway, hard surface
- Light duty road, principal street, hard or improved surface
- Other road or street, road
- Route marker, Interstate, U.S. State
- Railroad, standard gage, narrow gage
- Bridge, overpass, underpass
- Tunnel, road, railroad
- Built up area, locality, elevation
- Airport, landing field, landing strip
- National boundary
- County boundary
- National or State reservation boundary
- Land grant boundary
- U.S. public lands survey, range, township, section
- Range, township, section line, projected
- Power transmission line, pipeline
- Dam, dam with lock
- Cemetery, building
- Wellhead, water well, spring
- Mine shaft, salt or cave, mine, quarry, gravel pit
- Campground, picnic area, U.S. location monument
- Ruin, cliff dwelling
- Distorted surface, strip mine, lava, sand
- Contours, index, intermediate, supplementary
- Bathymetric contours, index, intermediate
- Stream, lake, perennial, intermittent
- Rapids, large and small, falls, large and small
- Area to be submerged, marsh, swamp
- Land subject to controlled inundation
- Scrub, mangrove
- Gravel, vineyard

A pamphlet describing topographic maps is available on request

UNITED STATES, Topo. 1:100,000, Midland, MI. 1984

Copy 1



SCALE 1:100 000
 1 CENTIMETER ON THE MAP REPRESENTS 1 KILOMETER ON THE GROUND

KILOMETERS 1 0 1 2 3 4 5 6 7 8 9 10 11 12 13 14 15 16 17 18 19 20

MILES 1 0 1 2 3 4 5 6 7 8 9 10 11 12 13 14 15 16 17 18 19 20

0 5000 10000 15000 20000 25000 30000 35000 40000 45000 50000 55000 60000 65000 70000 FEET

MIDLAND, MICHIGAN 43084-E1-PL-100

1984