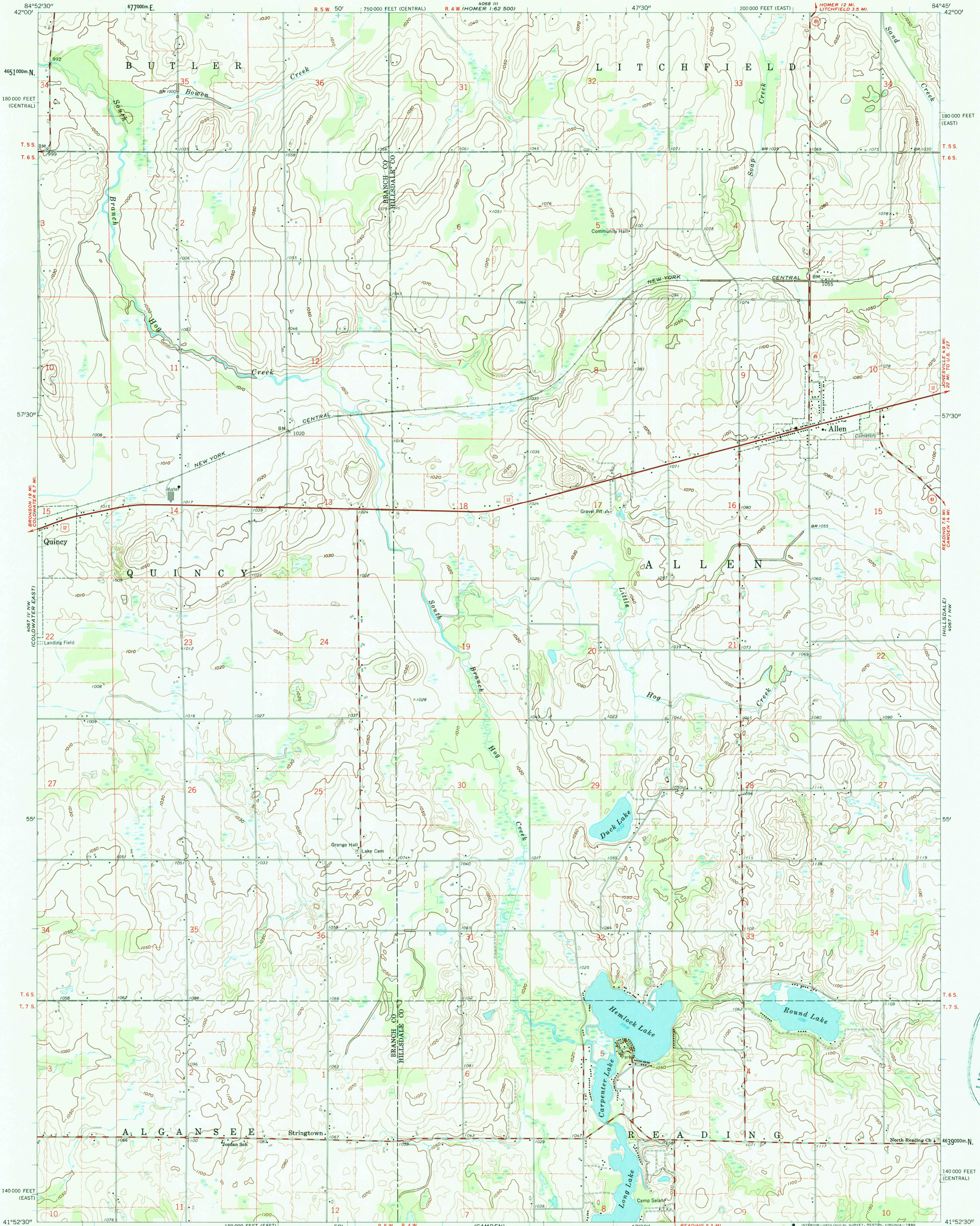


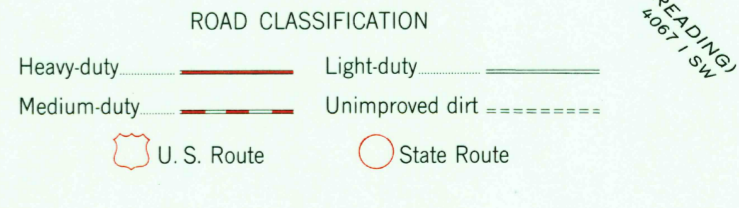
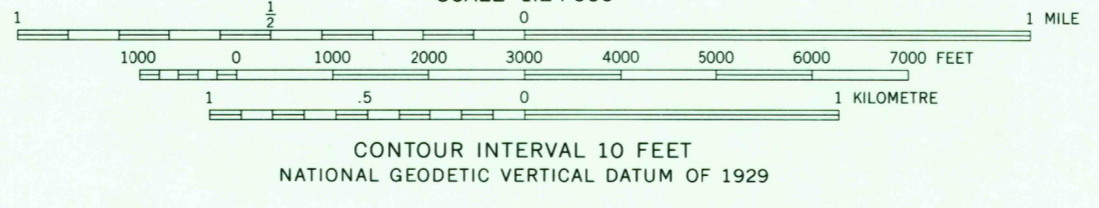
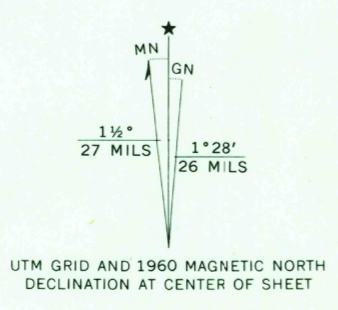
4068 III
(SPRING 1960)
1:62,500



Mapped, edited, and published by the Geological Survey

Control by USGS and USC&GS
Topography from aerial photographs by photogrammetric methods
Aerial photographs taken 1958. Field check 1960
Polyconic projection. 1927 North American datum
10,000-foot grids based on Michigan coordinate system,
east and central zones
1000-metre Universal Transverse Mercator grid ticks,
zone 16, shown in blue
Fine red dashed lines indicate selected fence and field lines where
generally visible on aerial photographs. This information is unchecked

Map photospected 1977
No major culture or drainage changes observed



THIS MAP COMPLIES WITH NATIONAL MAP ACCURACY STANDARDS
FOR SALE BY U. S. GEOLOGICAL SURVEY, DENVER, COLORADO 80225, OR RESTON, VIRGINIA 22092
AND GEOLOGICAL SURVEY DIVISION
MICHIGAN DEPARTMENT OF NATURAL RESOURCES, LANSING, MICHIGAN 48909
A FOLDER DESCRIBING TOPOGRAPHIC MAPS AND SYMBOLS IS AVAILABLE ON REQUEST

ALLEN, MICH.
N4152.5-W8445.7/5
1960
PHOTOINSPECTED 1977
AMS 4067 IV NE-SERIES V862

REC'D FILE COPY
MAY 3 1 1969
USGS MAP INFORMATION UNIT

CALIFORNIA
4067 IV SW

REDUCED
4067 IV SW