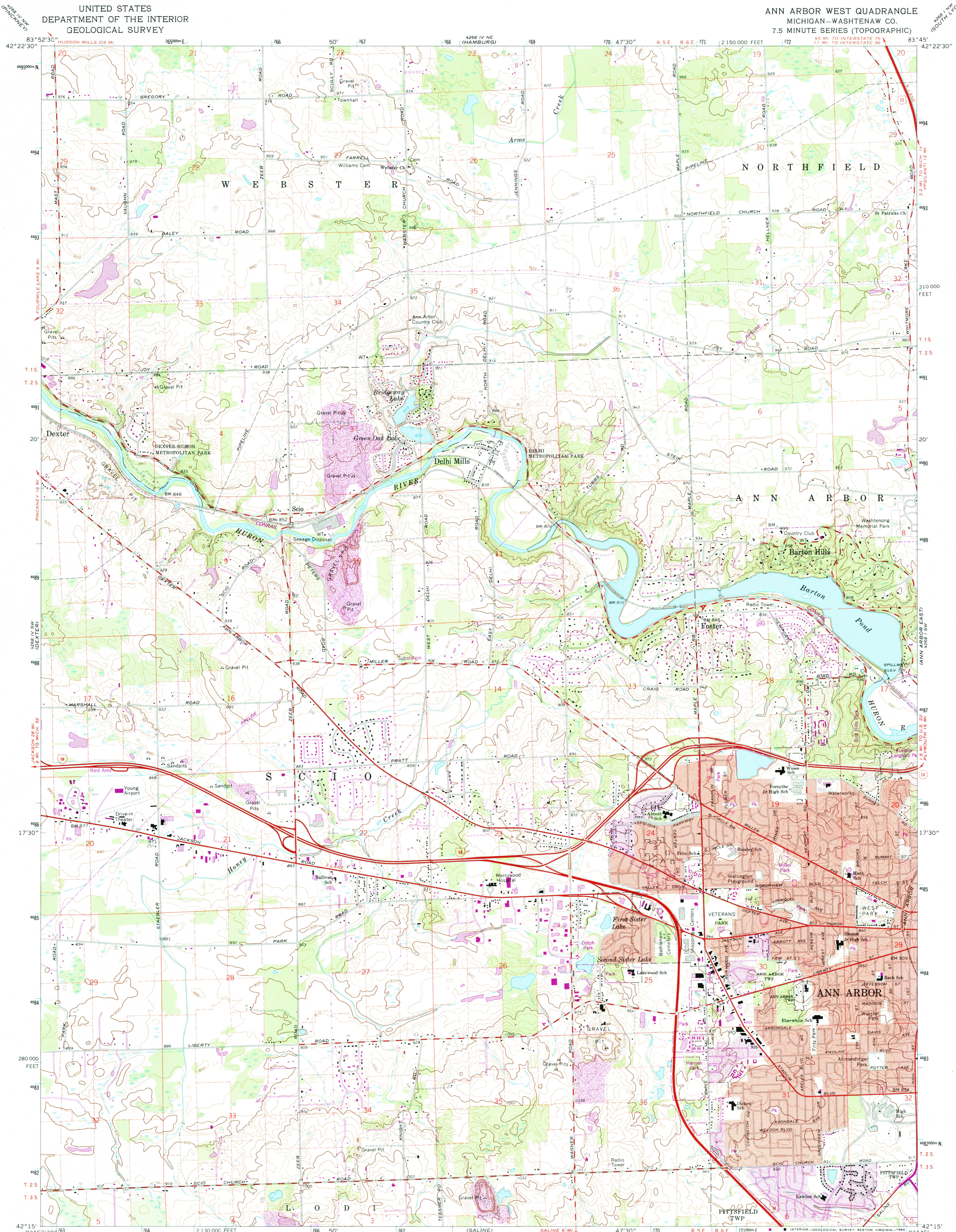
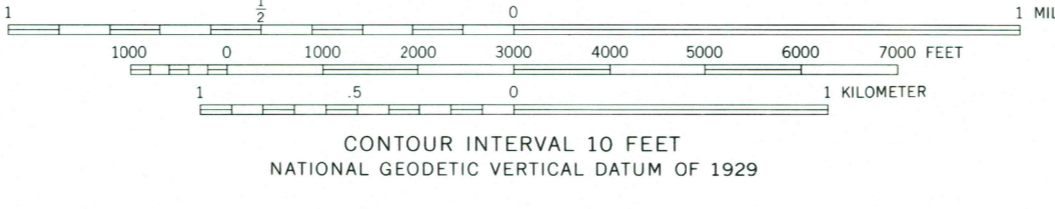


UNITED STATES  
DEPARTMENT OF THE INTERIOR  
GEOLOGICAL SURVEY

ANN ARBOR WEST QUADRANGLE  
MICHIGAN—WASHTENAW CO.  
7.5 MINUTE SERIES (TOPOGRAPHIC)



Mapped, edited, and published by the Geological Survey  
Control by USGS and USC&GS  
Topography by photogrammetric methods from aerial photographs taken 1963-64. Field checked 1965  
Polyconic projection. 1927 North American datum  
10,000-foot grid based on Michigan coordinate system, south zone  
1000-meter Universal Transverse Mercator grid ticks, zone 17, shown in blue  
Red tint indicates areas in which only landmark buildings are shown  
Fine red dashed lines indicate selected fence and field lines where generally visible on aerial photographs. This information is unchecked  
To place on the predicted North American Datum 1983, move the projection lines 5 meters west as shown by dashed corner ticks



THIS MAP COMPLIES WITH NATIONAL MAP ACCURACY STANDARDS  
FOR SALE BY U.S. GEOLOGICAL SURVEY, RESTON, VIRGINIA 22092  
AND GEOLOGICAL SURVEY DIVISION  
MICHIGAN DEPARTMENT OF NATURAL RESOURCES, LANSING, MICHIGAN 48909  
A FOLDER DESCRIBING TOPOGRAPHIC MAPS AND SYMBOLS IS AVAILABLE ON REQUEST



Revisions shown in purple compiled from aerial photographs taken 1982 and other sources  
This information not field checked. Map edited 1983  
Purple tint indicates extension of urban area

ROAD CLASSIFICATION  
Heavy-duty ——— Light-duty ———  
Medium-duty ——— Unimproved dirt ———  
○ Interstate Route ○ U.S. Route ○ State Route

ANN ARBOR WEST, MICH.  
N4215-W8345/7.5  
1965  
PHOTOREVISED 1983  
DMA 4268 IV SE—SERIES 8862

RETURN TO:  
USGS NMD HISTORICAL MAP ARCHIVES