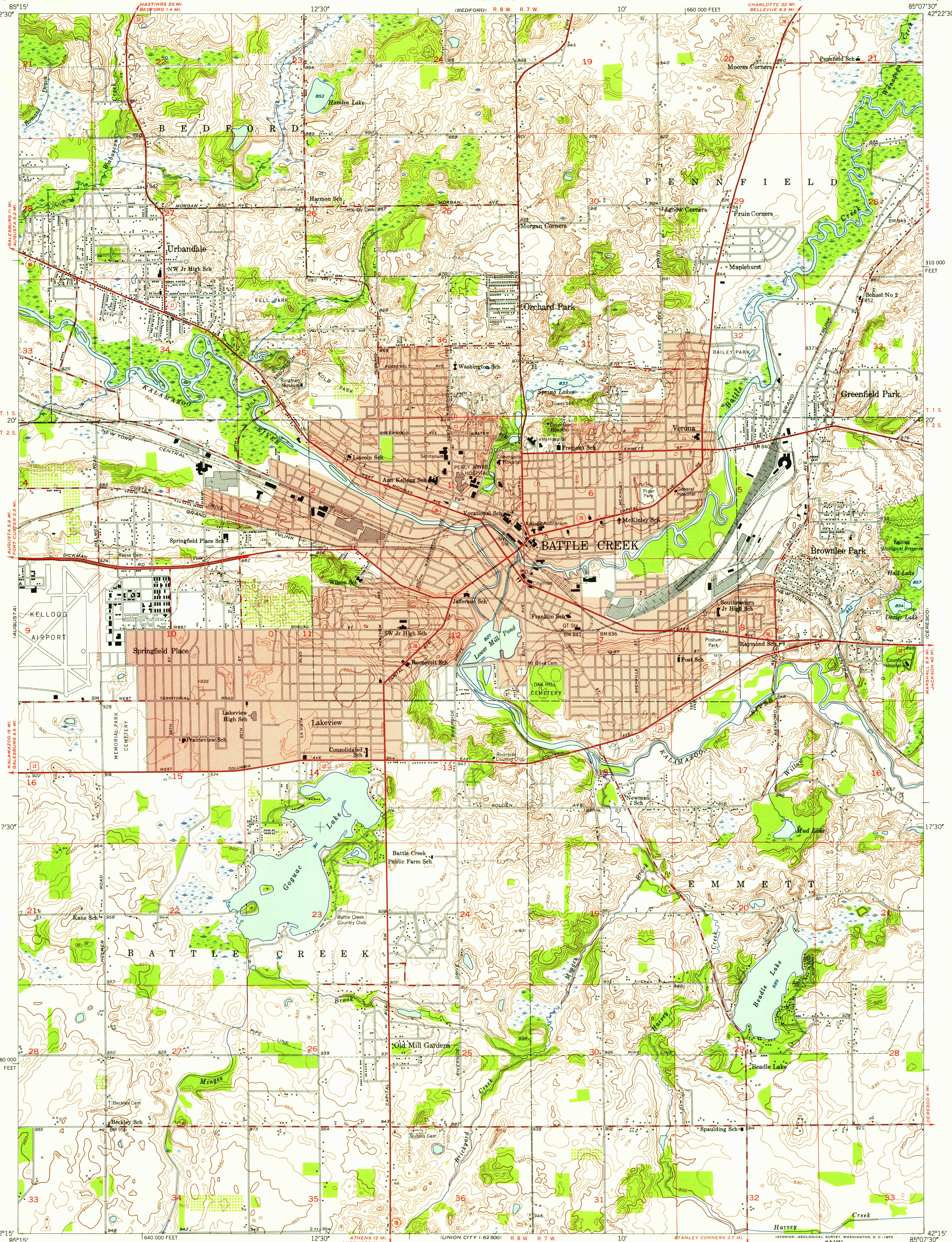
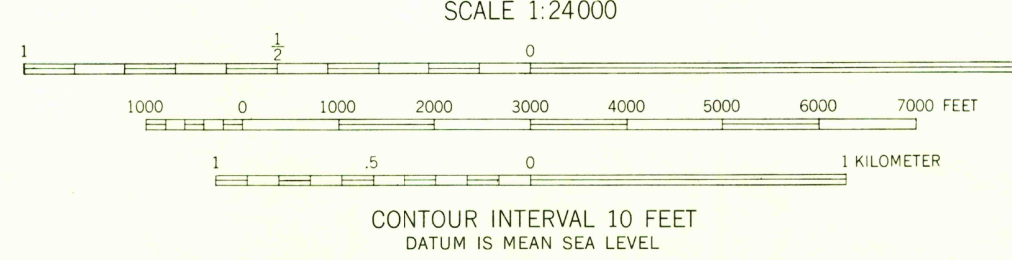
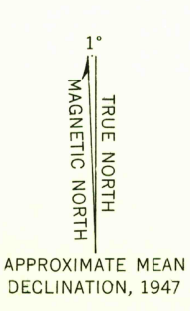


U.S.G.S.
FILE COPY
TOPOGRAPHIC DIVISION

U.S.G.S.
FILE COPY
TOPOGRAPHIC DIVISION



Mapped, edited, and published by the Geological Survey
Control by USGS and USC&GS
Culture and drainage in part compiled from aerial photographs
taken 1946. Topography by plane-table surveys 1947
Polyconic projection. 1927 North American datum
10,000-foot grid based on Michigan coordinate system,
central zone
Red tint indicates areas in which only
landmark buildings are shown



USGS
Historical File
Topographic Division

ROAD CLASSIFICATION

Heavy-duty	4 LANE 6 LANE	Light-duty
Medium-duty	2 LANE 6 LANE	Unimproved dirt
U.S. Route		State Route



BATTLE CREEK, MICH.
SW/4 BATTLE CREEK 15' QUADRANGLE
N4215-W8507.5/7.5

THIS MAP COMPLIES WITH NATIONAL MAP ACCURACY STANDARDS
FOR SALE BY U. S. GEOLOGICAL SURVEY, WASHINGTON 25, D. C.
A FOLDER DESCRIBING TOPOGRAPHIC MAPS AND SYMBOLS IS AVAILABLE ON REQUEST