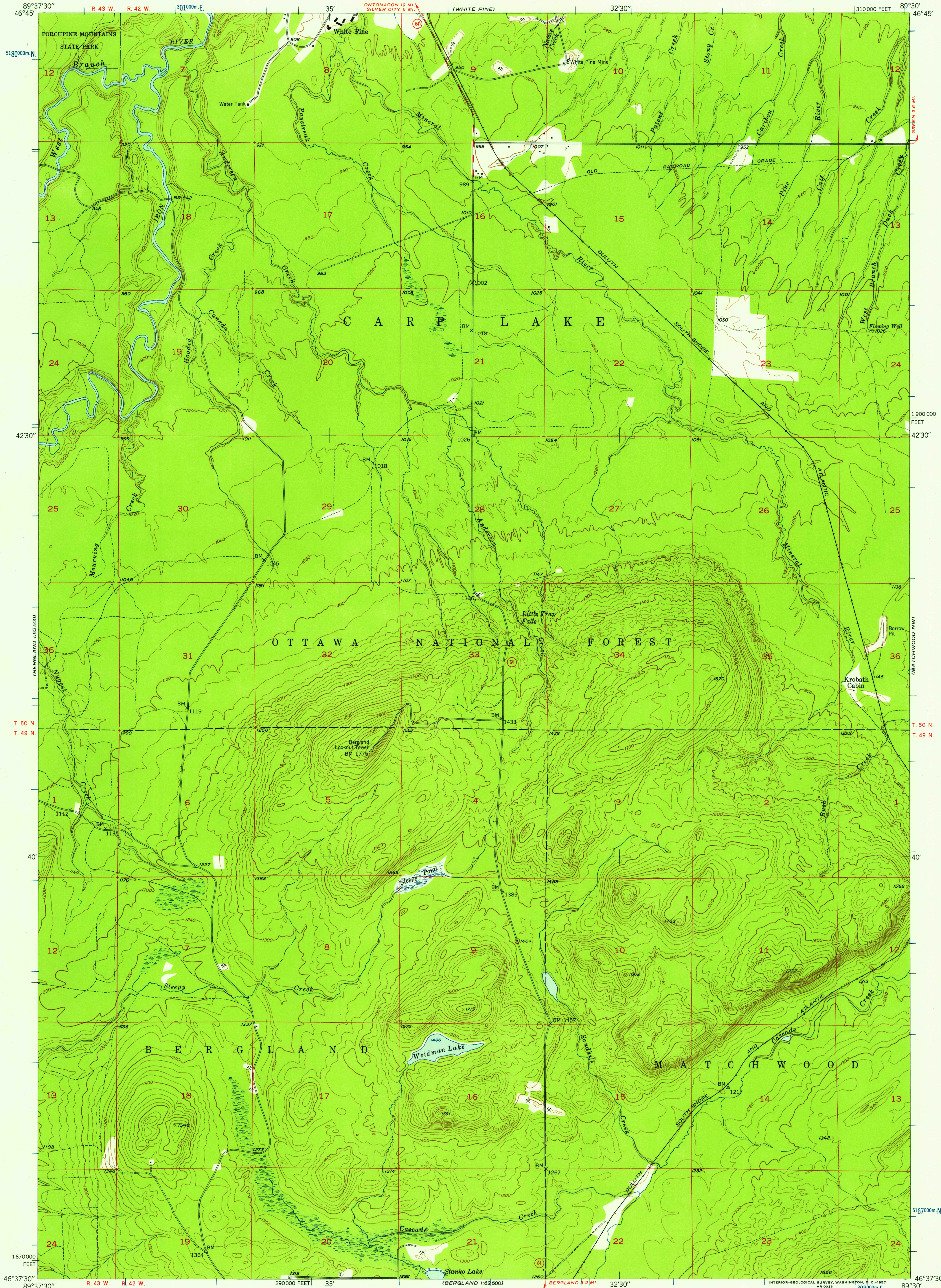


UNITED STATES
DEPARTMENT OF THE INTERIOR
GEOLOGICAL SURVEY

BERGLAND NE QUADRANGLE
MICHIGAN—ONTONAGON CO.
7.5 MINUTE SERIES (TOPOGRAPHIC)
NE/4 BERGLAND 15' QUADRANGLE

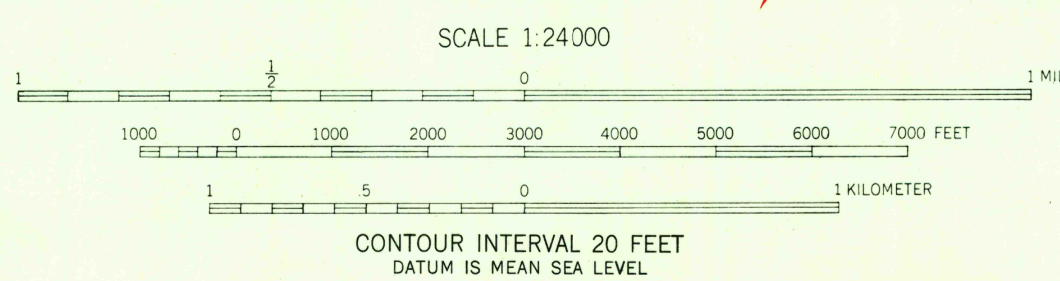


Maped, edited, and published by the Geological Survey
Control by USGS and USC&GS

Topography from aerial photographs by multiplex methods
Aerial photographs taken 1944. Field check 1948
Revised 1956

Polycyclic projection. 1927 North American datum
10,000-foot grid based on Michigan coordinate system, west zone
1000-meter Universal Transverse Mercator grid ticks,
zone 16, shown in blue

TRUE NORTH
MAGNETIC NORTH
APPROXIMATE MEAN
DECLINATION, 1956



THIS MAP COMPLIES WITH NATIONAL MAP ACCURACY STANDARDS
FOR SALE BY U. S. GEOLOGICAL SURVEY, WASHINGTON 25, D. C.
A FOLDER DESCRIBING TOPOGRAPHIC MAPS AND SYMBOLS IS AVAILABLE ON REQUEST

USGS
Historical File
Topographic Division



U.S.G.S.
FILE COPY
TOPOGRAPHIC DIVISION

ROAD CLASSIFICATION
Medium-duty ——— Light-duty ———
Unimproved dirt ———
State Route

BERGLAND NE, MICH.
NE/4 BERGLAND 15' QUADRANGLE
N 4637.5—W 8930/7.5
1956

OCT 24 1957