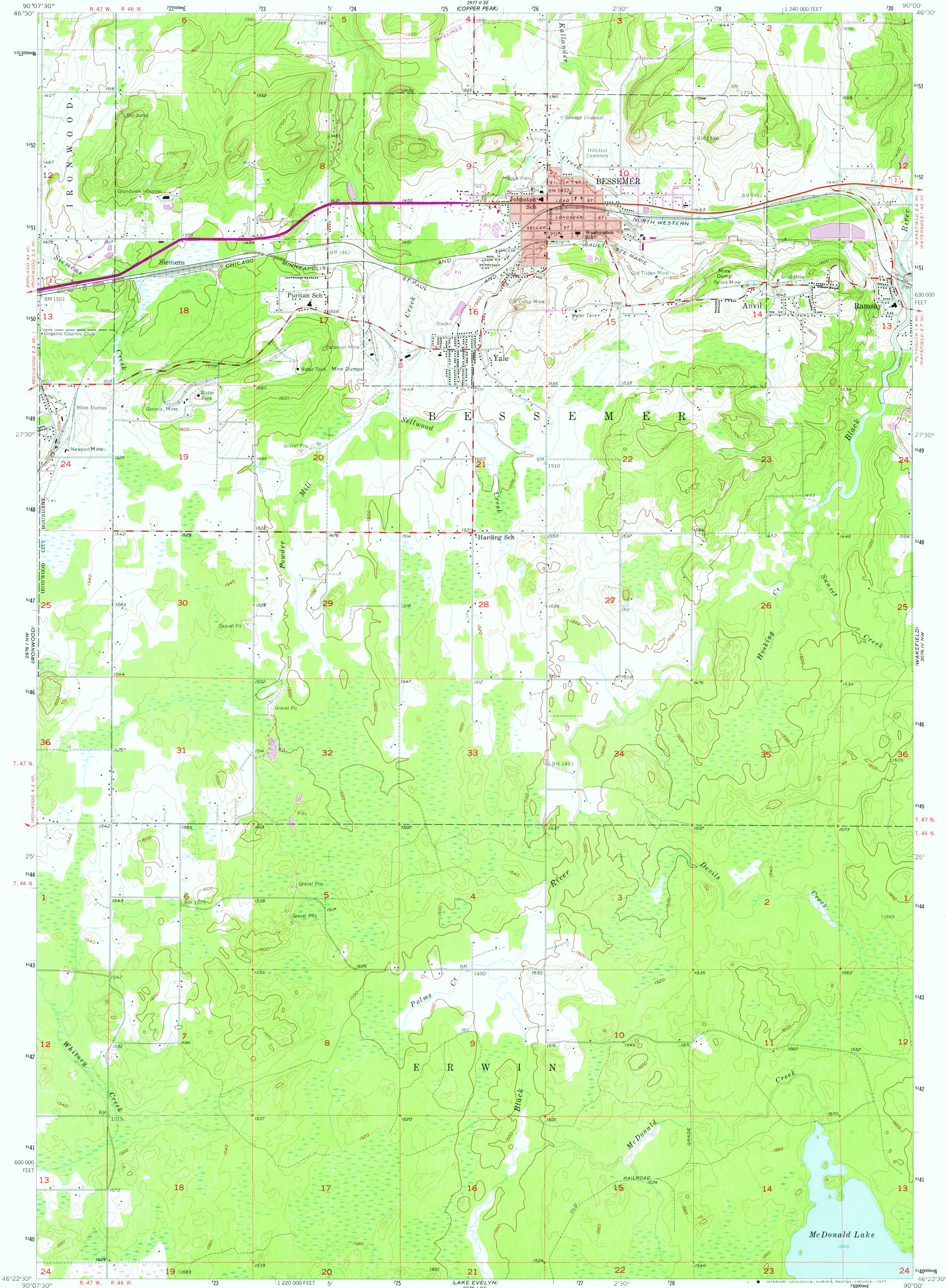


UNITED STATES
DEPARTMENT OF THE INTERIOR
GEOLOGICAL SURVEY

BESSEMER QUADRANGLE
MICHIGAN—GOGEIC CO.
7.5 MINUTE SERIES (TOPOGRAPHIC)
NE 1/4 IRONWOOD 15' QUADRANGLE



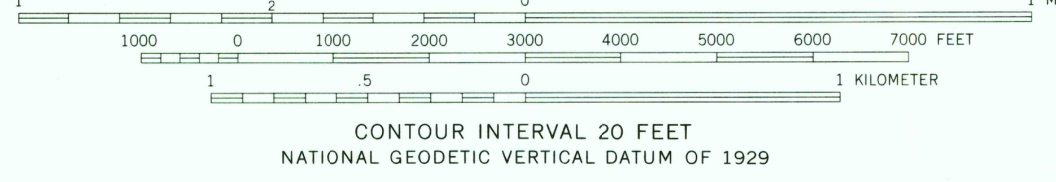
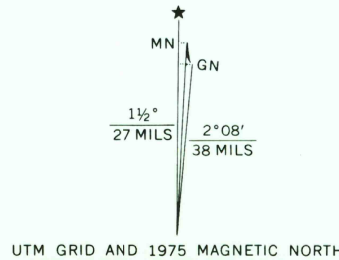
Mapped, edited, and published by the Geological Survey
Control by USGS and USCGS

Topography from aerial photographs by Kelsh plotter
Aerial photographs taken 1951. Field check 1955

Polyconic projection. 1927 North American datum
10,000-foot grid based on Michigan coordinate system,
north zone

Red tint indicates area in which only
landmark buildings are shown
1000-meter Universal Transverse Mercator grid ticks,
zone 15, shown in blue

Revisions shown in purple compiled from aerial photographs
taken 1975. This information not field checked



THIS MAP COMPLIES WITH NATIONAL MAP ACCURACY STANDARDS
FOR SALE BY U. S. GEOLOGICAL SURVEY, RESTON, VIRGINIA 22092
A FOLDER DESCRIBING TOPOGRAPHIC MAPS AND SYMBOLS IS AVAILABLE ON REQUEST

ROAD CLASSIFICATION
Heavy-duty ——— Light-duty ———
Medium-duty ——— Unimproved dirt ———
U. S. Route ——— State Route ———



BESSEMER, MICH.
NE 1/4 IRONWOOD 15' QUADRANGLE
N 4622.5—W 9000/7.5
USGS
Historical File
Topographic Division
1955
PHOTOREVISED 1975
AMS 2976 1 NE-SERIES Y862

2650
SEP 26 1977