

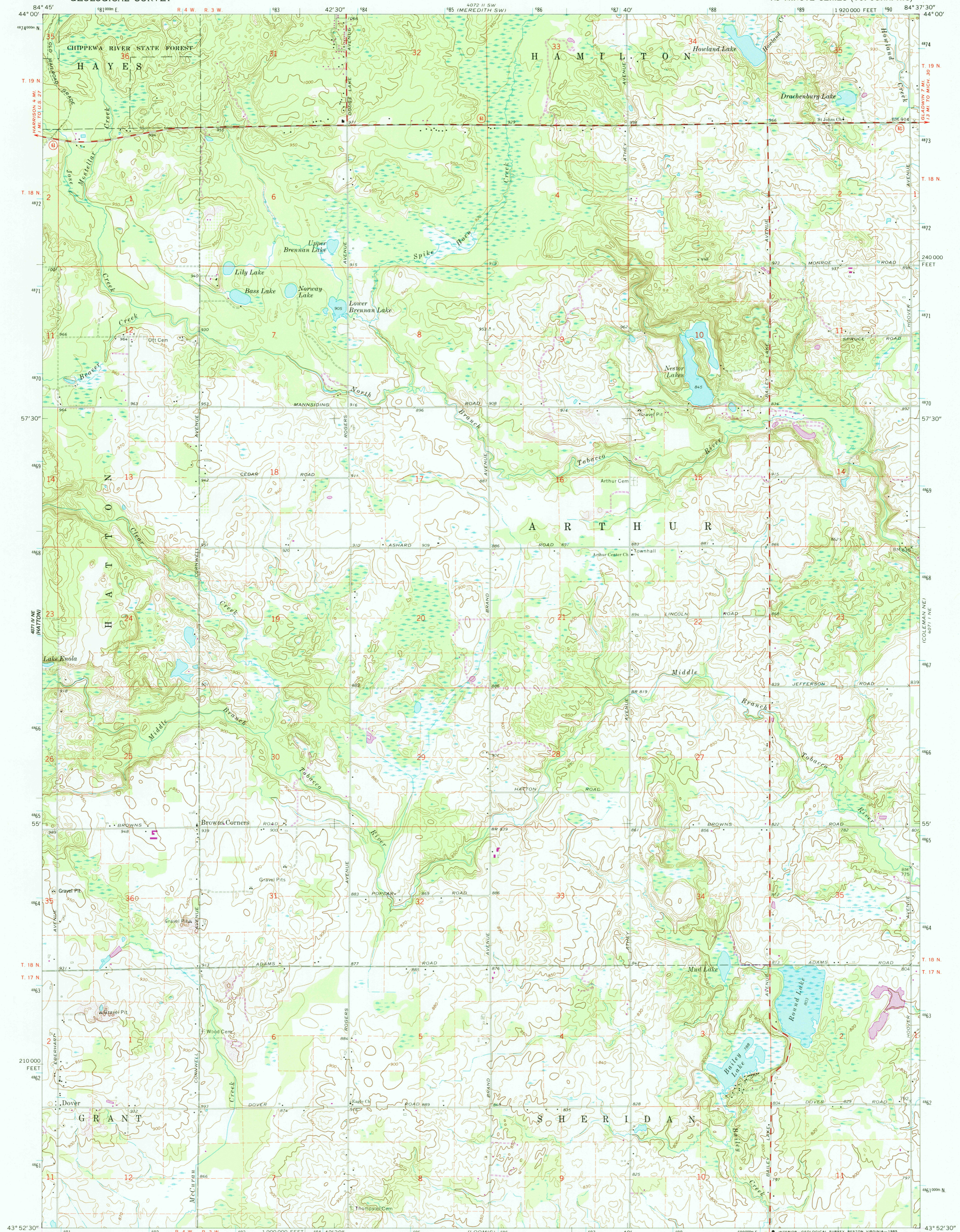
8274 SE
(HARRISON)

UNITED STATES
DEPARTMENT OF THE INTERIOR
GEOLOGICAL SURVEY

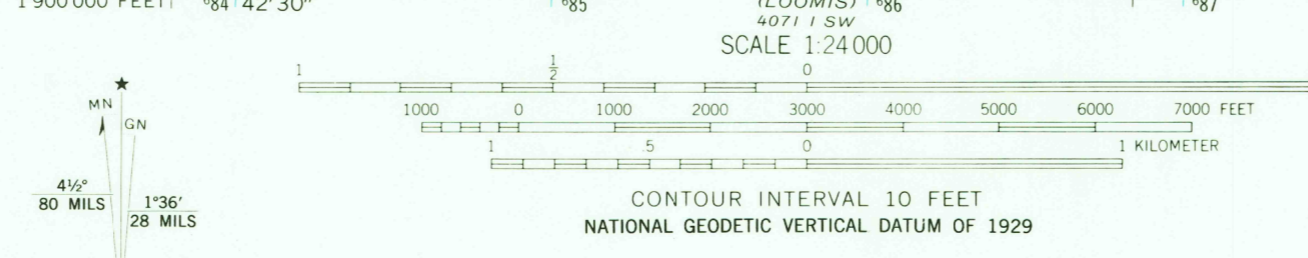
STATE OF MICHIGAN

BROWNS CORNERS QUADRANGLE
MICHIGAN—CLARE CO.
7.5 MINUTE SERIES (TOPOGRAPHIC)

8274 SE
(ISABELLE)



Mapped, edited, and published by the Geological Survey in cooperation with State of Michigan agencies
Control by USGS and USC&GS
Topography by photogrammetric methods from aerial photographs taken 1968. Field checked 1969
Polyconic projection. 1927 North American datum 10,000-foot grid based on Michigan coordinate system, central zone 1000-meter Universal Transverse Mercator grid ticks, zone 16, shown in blue
Fine red dashed lines indicate selected fence and field lines where generally visible on aerial photographs. This information is unchecked
To place on the predicted North American Datum 1983, move the projection lines 1 meter north and 1 meter west as shown by dashed corner ticks
There may be private inholdings within the boundaries of the National or State reservations shown on this map



ROAD CLASSIFICATION
Secondary highway, all weather, Light duty road, all weather, hard surface
Unimproved road, fair or dry weather
State Route

UTM GRID AND 1985 MAGNETIC NORTH DECLINATION AT CENTER OF SHEET
THIS MAP COMPLIES WITH NATIONAL MAP ACCURACY STANDARDS FOR SALE BY U. S. GEOLOGICAL SURVEY, RESTON, VIRGINIA 22092 AND GEOLOGICAL SURVEY DIVISION MICHIGAN DEPARTMENT OF NATURAL RESOURCES, LANSING, MICHIGAN 48909 A FOLDER DESCRIBING TOPOGRAPHIC MAPS AND SYMBOLS IS AVAILABLE ON REQUEST
QUADRANGLE LOCATION
Revisions shown in purple and woodland compiled from aerial photographs taken 1981 and other sources This information not field checked. Map edited 1985
BROWNS CORNERS, MICH. 43084-H6-TF-024
1969
PHOTOREVISED 1985
DMA 4071 1 NW-SERIES V862