

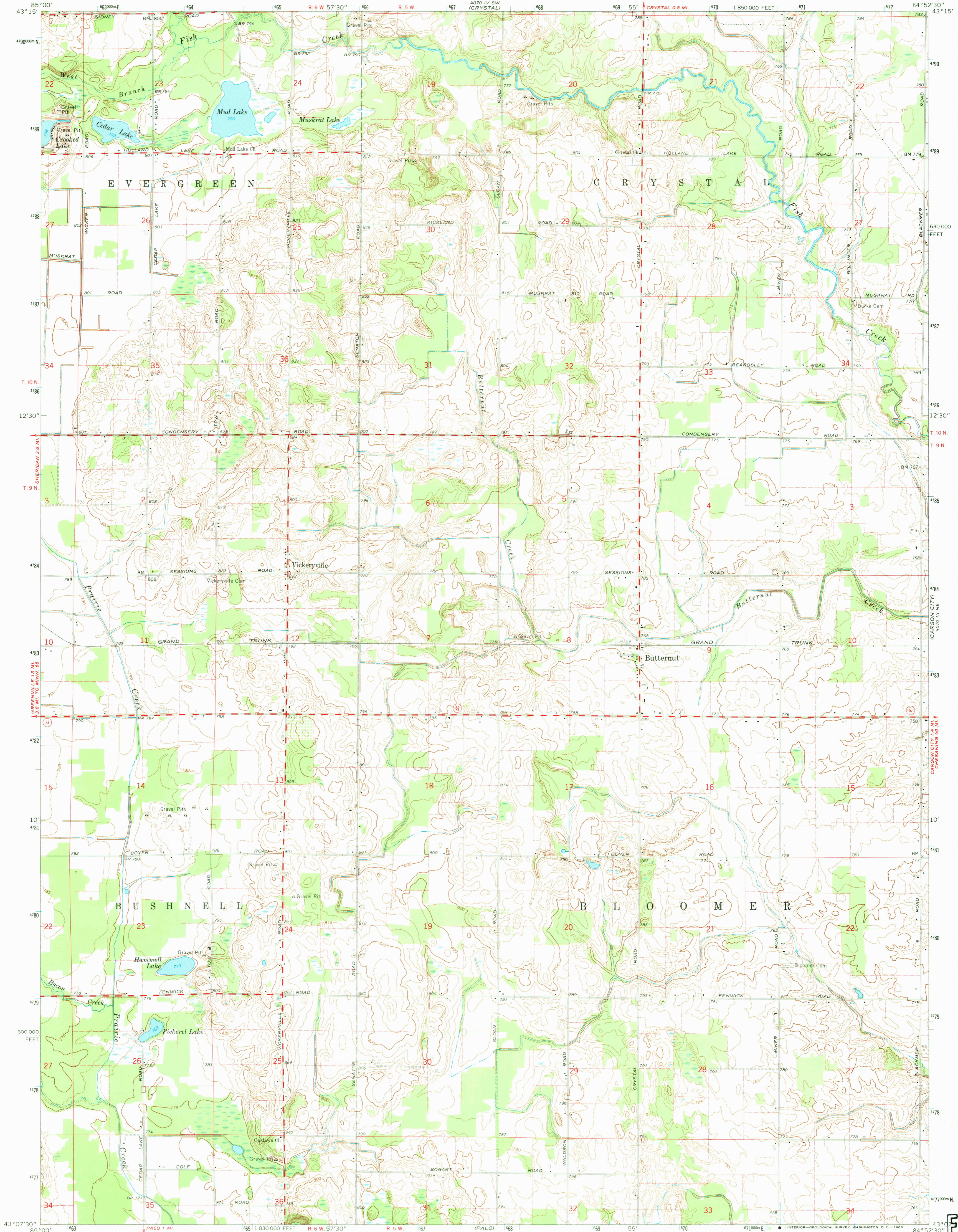
62° 55' N
62° 55' W

UNITED STATES
DEPARTMENT OF THE INTERIOR
GEOLOGICAL SURVEY

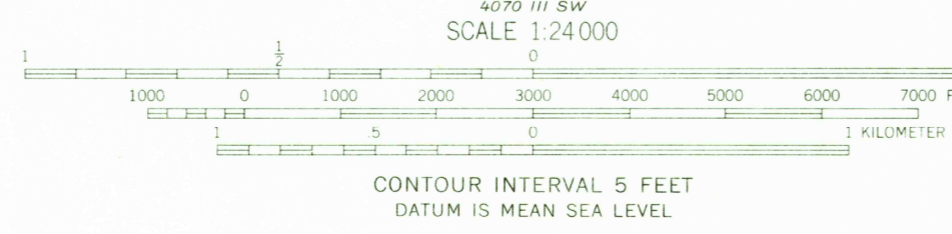
STATE OF MICHIGAN

BUTTERNUT QUADRANGLE
MICHIGAN—MONTCALM CO.
7.5 MINUTE SERIES (TOPOGRAPHIC)

40° 15' E
40° 15' E



Mapped, edited, and published by the Geological Survey in cooperation with State of Michigan agencies
Control by USGS and USC&GS
Topography by photogrammetric methods from aerial photographs taken 1965. Field checked 1967
Polyconic projection. 1927 North American datum
10,000-foot grid based on Michigan coordinate system, south zone 1000-meter Universal Transverse Mercator grid ticks, zone 16, shown in blue
Fine red dashed lines indicate selected fence and field lines where generally visible on aerial photographs. This information is un-checked



USGS
Historical File
Topographic Division

ROAD CLASSIFICATION
Medium-duty ——— Light-duty ———
Unimproved dirt ———
State Route ○



BUTTERNUT, MICH.
N4307.5—W8452.5/7.5

1967

AMS 4070 III NW—SERIES V862

U.S.G.S.
FILE COPY
TOPOGRAPHIC DIVISION

1975
11/16 5 1969