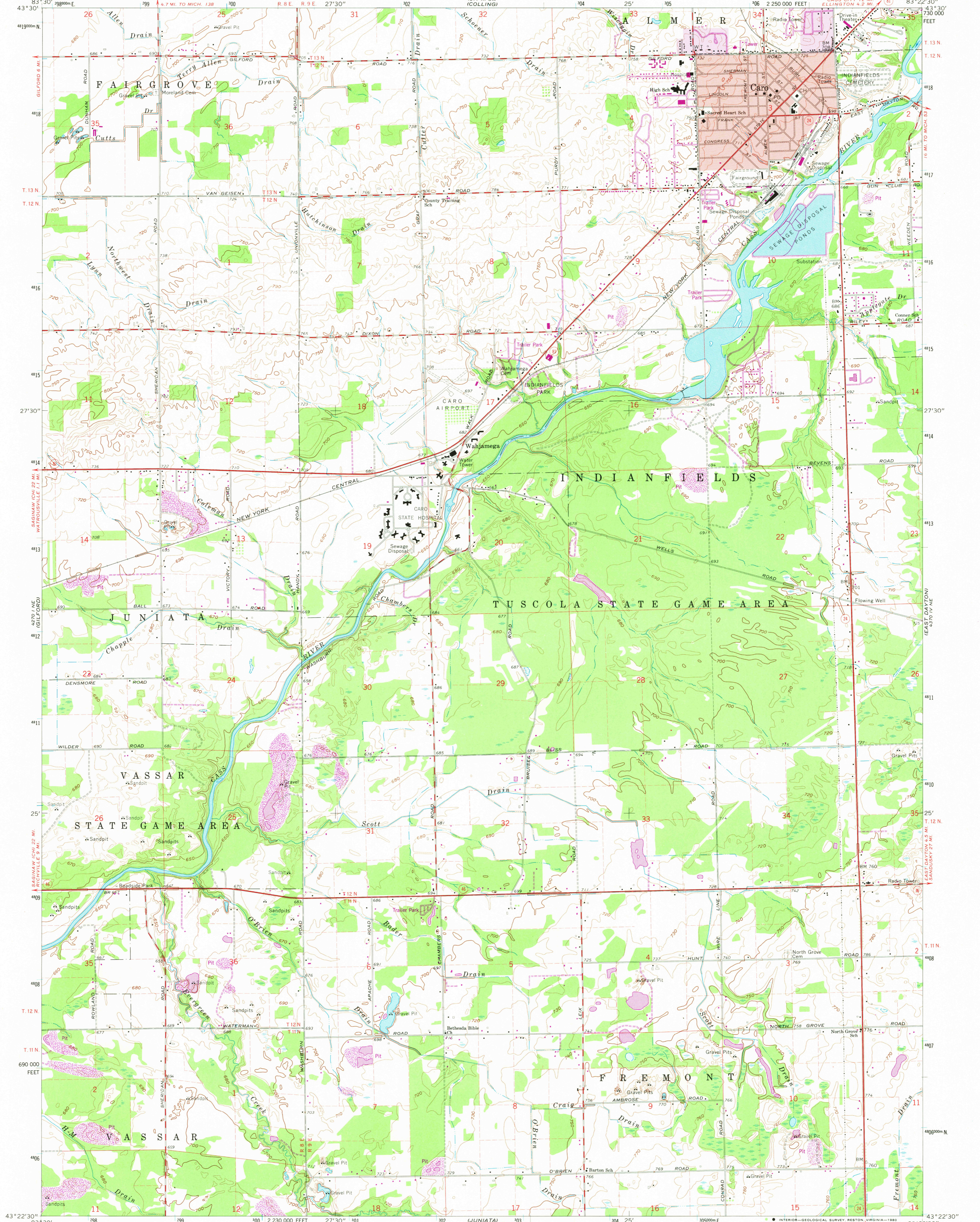
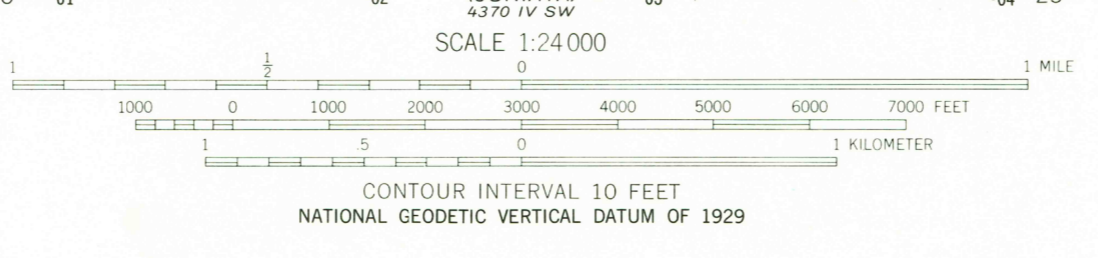


UNITED STATES
 GEOLOGICAL SURVEY

CARO QUADRANGLE
 MICHIGAN-TUSCOLA CO.
 7.5 MINUTE SERIES (TOPOGRAPHIC)



Mapped, edited, and published by the Geological Survey
 Control by USGS and USC&GS
 Topography by photogrammetric methods from aerial
 photographs taken 1959. Field checked 1963
 Polyconic projection. 1927 North American datum
 10,000-foot grid based on Michigan coordinate system, south zone
 1000-meter Universal Transverse Mercator grid ticks,
 zone 17, shown in blue
 Red tint indicates area in which only landmark buildings are shown
 To place on the predicted North American Datum 1983
 move the projection lines 1 meter north and
 6 meters west as shown by dashed corner ticks
 There may be private inholdings within the boundaries of
 the National or State Reservations shown on this map
 Revisions shown in purple compiled from aerial photographs taken
 1978. Map edited 1980. This information not field checked



ROAD CLASSIFICATION

Primary highway, hard surface	Light-duty road, hard or improved surface
Secondary highway, hard surface	Unimproved road
Interstate Route	U.S. Route
	State Route

THIS MAP COMPLIES WITH NATIONAL MAP ACCURACY STANDARDS
 FOR SALE BY U.S. GEOLOGICAL SURVEY, RESTON, VIRGINIA 22092
 AND BY THE GEOLOGICAL SURVEY DIVISION
 MICHIGAN DEPARTMENT OF NATURAL RESOURCES, LANSING, MICHIGAN 48909
 A FOLDER DESCRIBING TOPOGRAPHIC MAPS AND SYMBOLS IS AVAILABLE ON REQUEST

USGS
 Historical File
 Topographic Division
 CARO, MICH.
 N4322.5-W8322.5/7.5
 1963
 PHOTOREVISED 1980
 DMA 4370 IV NW-SERIES V82

DEC 16 1980
 2050