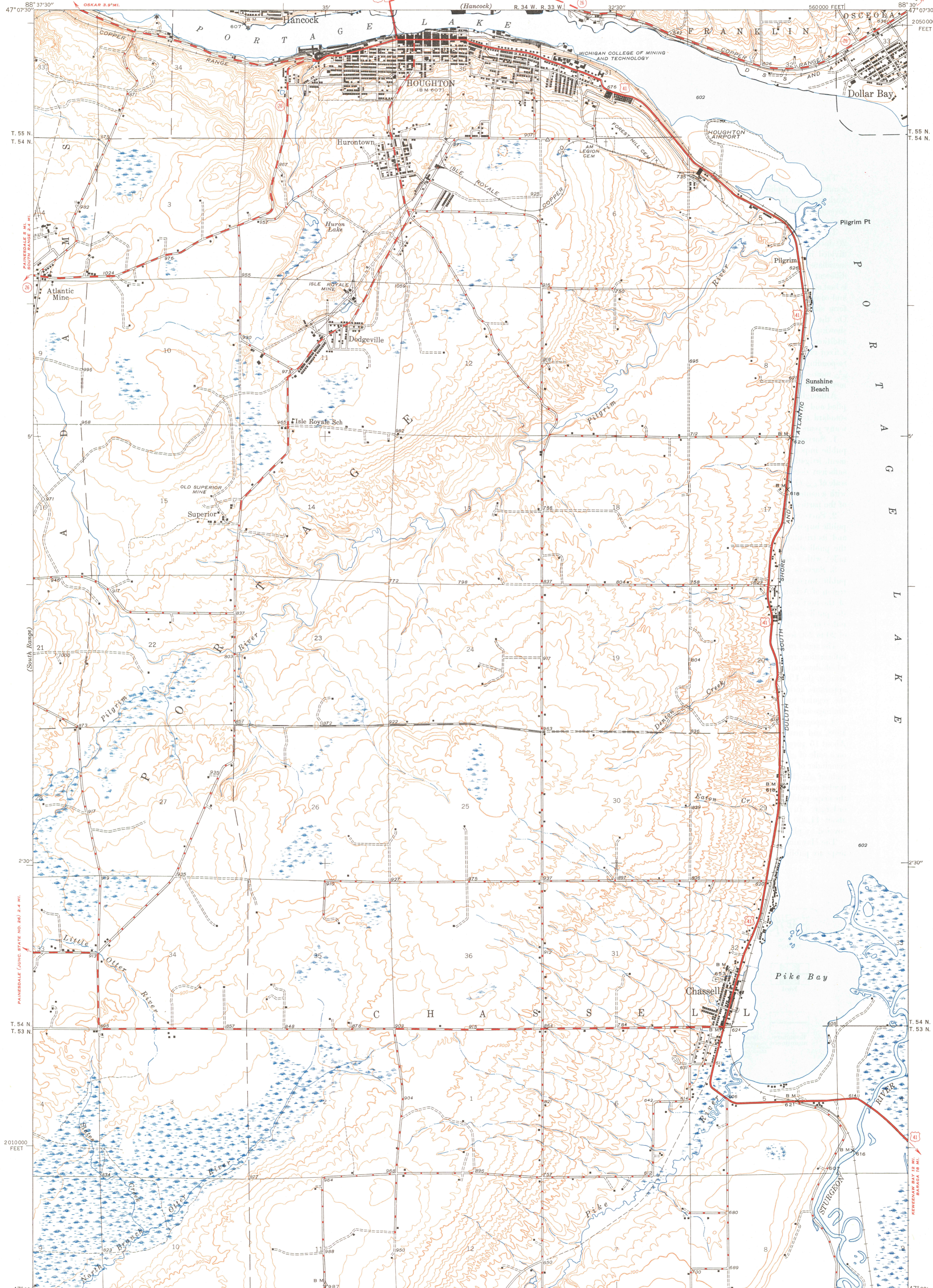


UNITED STATES
DEPARTMENT OF THE INTERIOR
GEOLOGICAL SURVEY

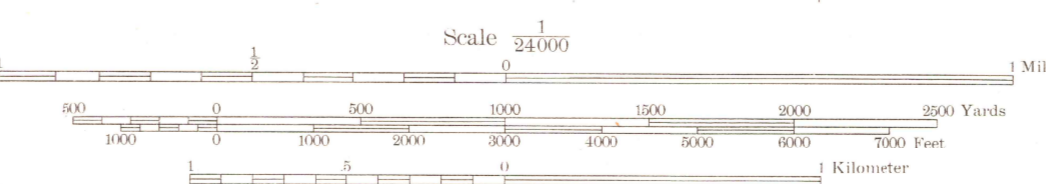
MICHIGAN
(HOUGHTON COUNTY)
CHASSELL QUADRANGLE
7½-MINUTE SERIES



Mapped by the Geological Survey
1946

ROAD CLASSIFICATION
1947
Operational hard-surface 1947
Secondary hard-surface
at weather road
More than two lanes indicated along road with tick at point of change
On weather roads
Lower surface graded
Unsurfaced graded
Dirt road
State Route
U. S. Route

TRUE NORTH
MAGNETIC NORTH
APPROXIMATE MEAN
DECLINATION, 1946



Contour interval 20 feet
Datum is mean sea level

Polyconic projection, 1927 North American datum
10000 foot grid based on Michigan West
rectangular coordinate system

CHASSELL, MICH.
Edition of 1948

N 4700 - W 8830 / 7.5

