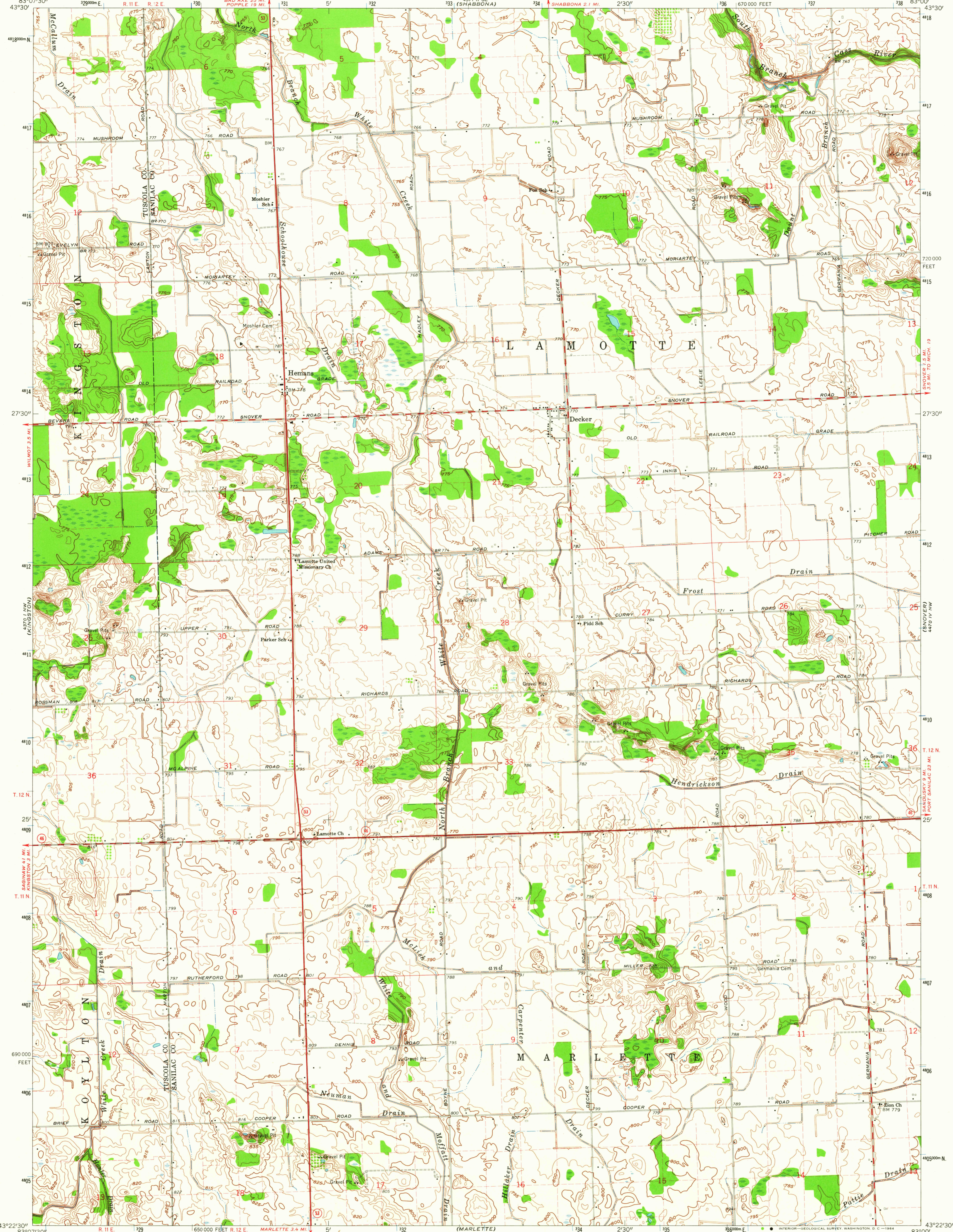
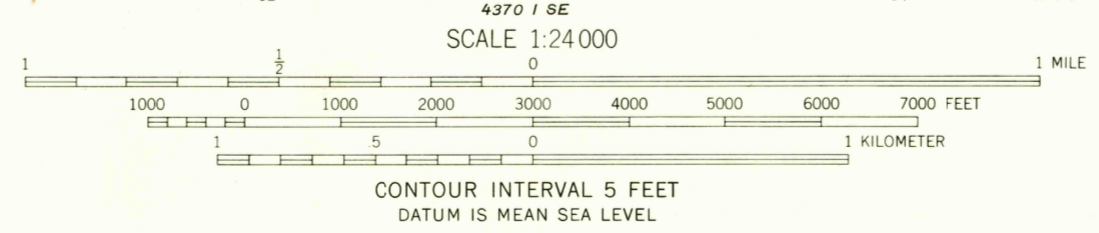
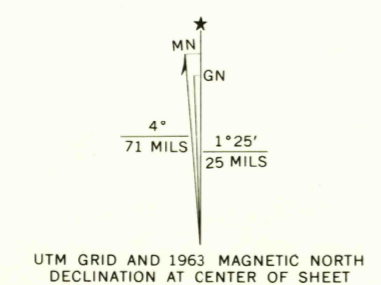


6525 (9-74)

6711 (9-74)



Mapped, edited, and published by the Geological Survey
Control by USGS and USCGS
Topography by photogrammetric methods from aerial
photographs taken 1959 and 1963. Field checked 1963
Polyconic projection. 1927 North American datum
10,000-foot grid based on Michigan coordinate system, east zone
1000-meter Universal Transverse Mercator grid ticks,
zone 17, shown in blue
Fine red dashed lines indicate selected fence and field lines where
generally visible on aerial photographs. This information is unchecked



ROAD CLASSIFICATION

| | |
|-------------|-----------------|
| Heavy-duty | Light-duty |
| Medium-duty | Unimproved dirt |
| State Route | |

THIS MAP COMPLIES WITH NATIONAL MAP ACCURACY STANDARDS
FOR SALE BY U. S. GEOLOGICAL SURVEY, WASHINGTON 25, D. C.
A FOLDER DESCRIBING TOPOGRAPHIC MAPS AND SYMBOLS IS AVAILABLE ON REQUEST

U.S.G.S.
FILE COPY
TOPOGRAPHIC DIVISION

DECKER, MICH.
N4322.5—W8300/7.5
1963
AMS 4370 1 NE—SERIES V682

SEP 2 4 1964

2195