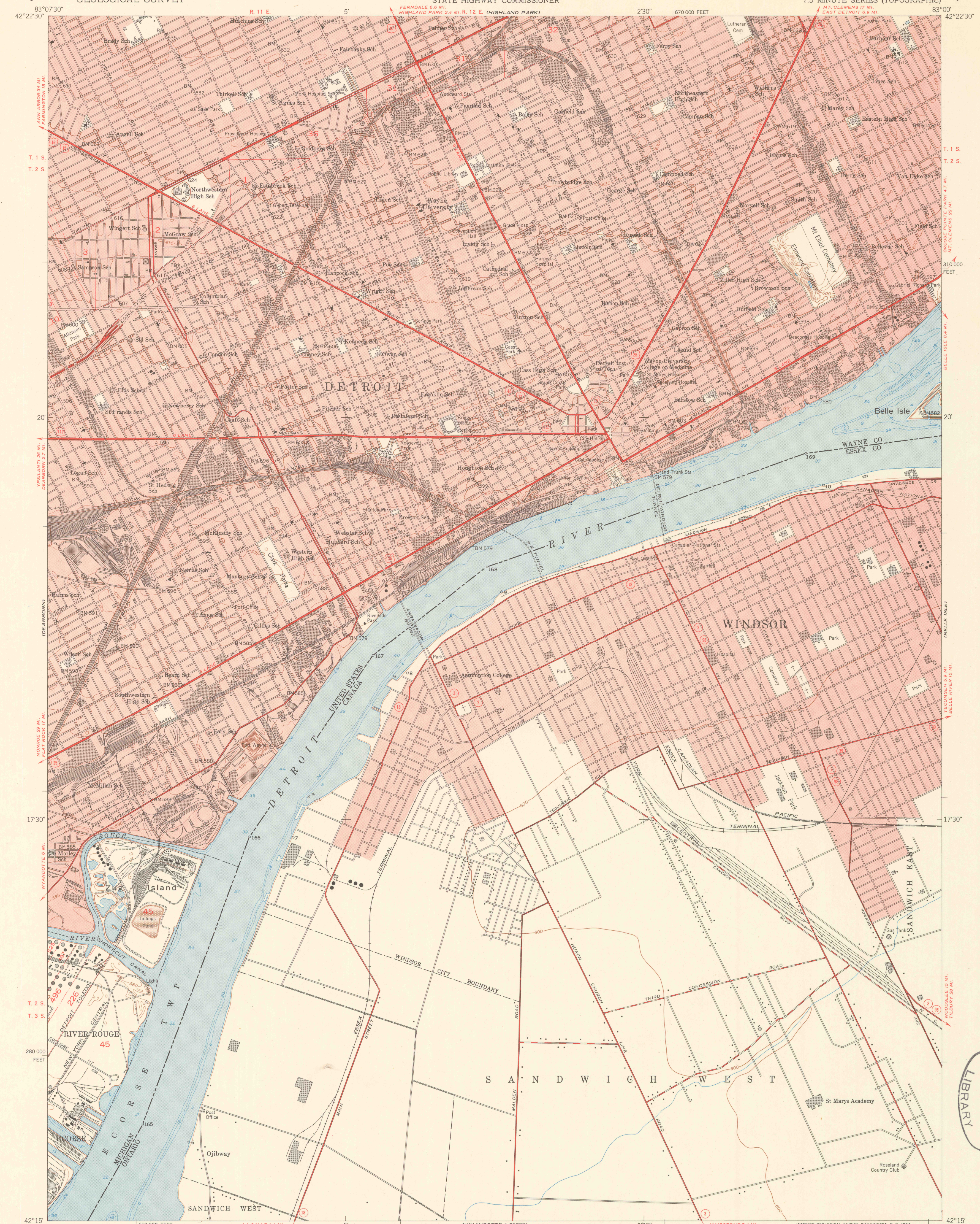
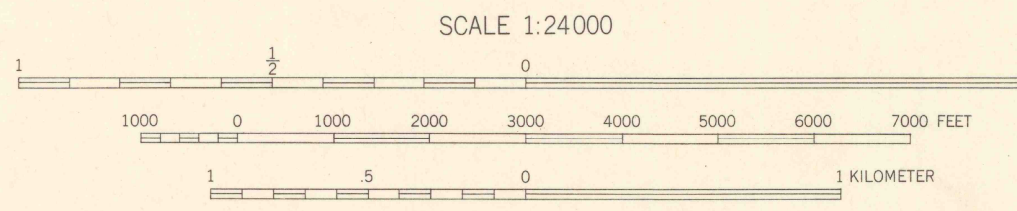
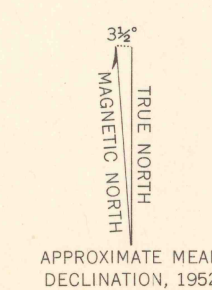


ROYAL CAN.

VEROSSE POINTS



Mapped, edited, and published by the Geological Survey
Control by USGS, USC&GS, USCE, and City of Detroit
Culture and drainage in part compiled from aerial photographs
Topography by plane-table surveys 1938. Culture revised 1952
Hydrography from U. S. Lake Survey Chart 41 (1:30,000)
Canadian topography copied from Windsor quadrangle (1:63,360)
1909, revised 1939, Canadian Department of National Defence
Polyconic projection. 1927 North American datum
10,000-foot grid based on Michigan coordinate system,
east zone
Red tint indicates areas in which only
landmark buildings are shown



SCALE 1:24000
CONTOUR INTERVAL 5 FEET
CONTOUR INTERVAL IN CANADIAN AREA 25 FEET
DATUM IS MEAN SEA LEVEL
DEPTH CURVES AND SOUNDINGS IN FEET—DATUM IS RIVER SURFACE AT
FOLLOWING STAGES: LAKE ST. CLAIR-573 AND LAKE ERIE-570
THE U. S. PORTION OF THIS MAP COMPLIES WITH NATIONAL MAP ACCURACY STANDARDS
FOR SALE BY U. S. GEOLOGICAL SURVEY, WASHINGTON 25, D. C.
A FOLDER DESCRIBING TOPOGRAPHIC MAPS AND SYMBOLS IS AVAILABLE ON REQUEST

ROAD CLASSIFICATION

Heavy-duty	4 LANE 6 LANE	Light-duty
Medium-duty	4 LANE 6 LANE	Unimproved dirt

U. S. Route State Route

DETROIT, MICH.
N4215-W8300/7.5
1952

