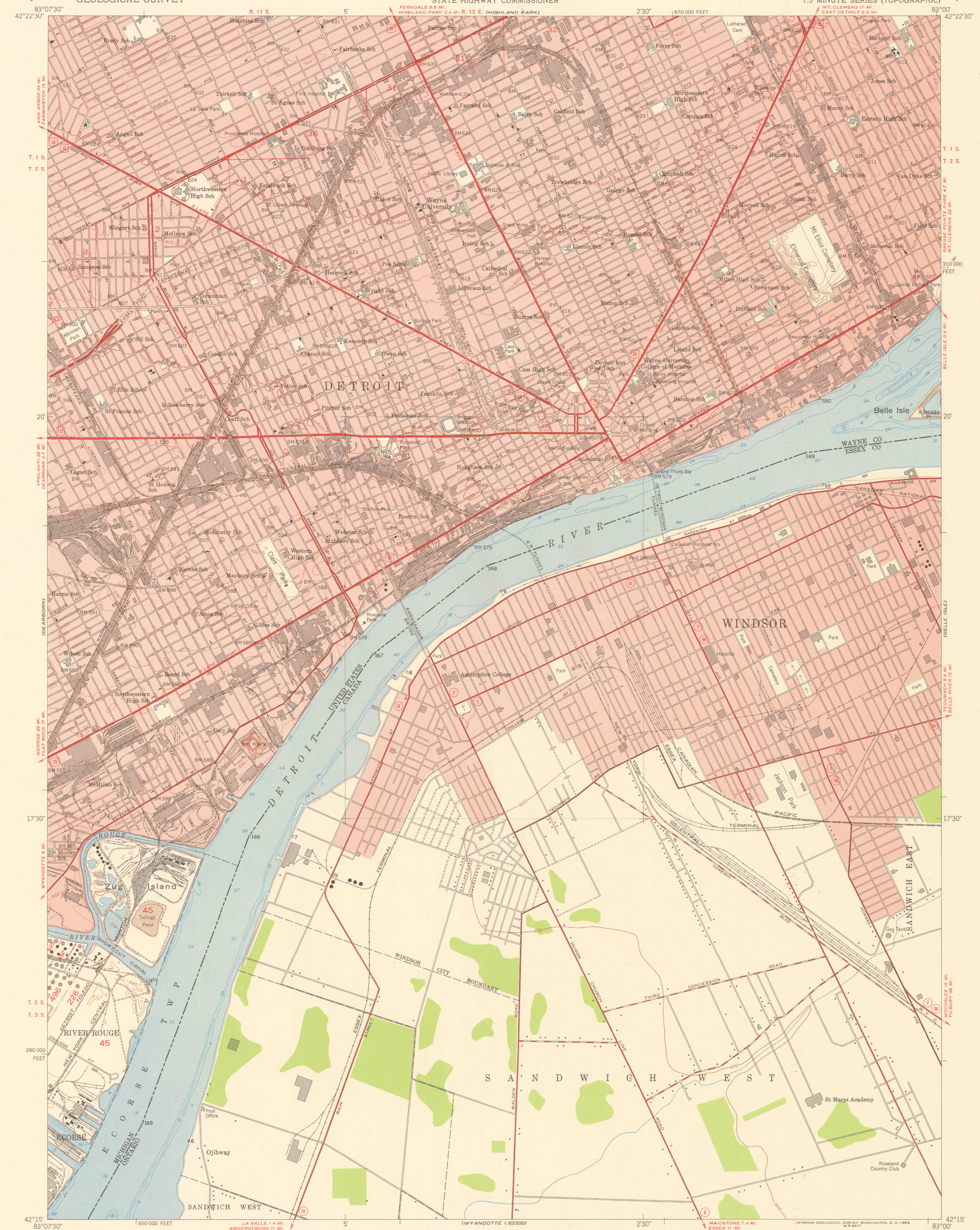


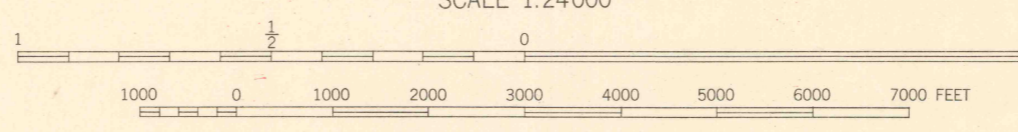
ROYAL OAK

GROSSE POINTE



Mapped, edited, and published by the Geological Survey  
Control by USGS, USC&GS, USCE, and City of Detroit  
Culture and drainage in part compiled from aerial photographs  
Topography by plane-table surveys 1938. Culture revised 1952  
Hydrography from U. S. Lake Survey Chart 41 (1:30,000)  
Canadian topography copied from Windsor quadrangle (1:63,360)  
1909, revised 1939, Canadian Department of National Defence  
Polyconic projection. 1927 North American datum  
10,000-foot grid based on Michigan coordinate system,  
east zone  
Red tint indicates areas in which only  
landmark buildings are shown

TRUE NORTH  
MAGNETIC NORTH  
APPROXIMATE MEAN  
DECLINATION, 1952



CONTOUR INTERVAL 5 FEET  
CONTOUR INTERVAL IN CANADIAN AREA 25 FEET  
DATUM IS MEAN SEA LEVEL  
DEPTH CURVES AND SOUNDINGS IN FEET—DATUM IS RIVER SURFACE AT  
FOLLOWING STAGES: LAKE ST. CLAIR-573 AND LAKE ERIE-570  
THE U. S. PORTION OF THIS MAP COMPLIES WITH NATIONAL MAP ACCURACY STANDARDS  
FOR SALE BY U. S. GEOLOGICAL SURVEY, WASHINGTON 25, D. C.  
A FOLDER DESCRIBING TOPOGRAPHIC MAPS AND SYMBOLS IS AVAILABLE ON REQUEST

ROAD CLASSIFICATION  
Heavy-duty 4 LANE 6 LANE Light-duty   
Medium-duty 4 LANE 6 LANE Unimproved dirt   
 U. S. Route State Route

FILE COPY  
APR 19 1954  
MAP INFORMATION OFFICE  
GEOLOGICAL SURVEY  
DETROIT, MICH.  
N4215-W8300/7.5

