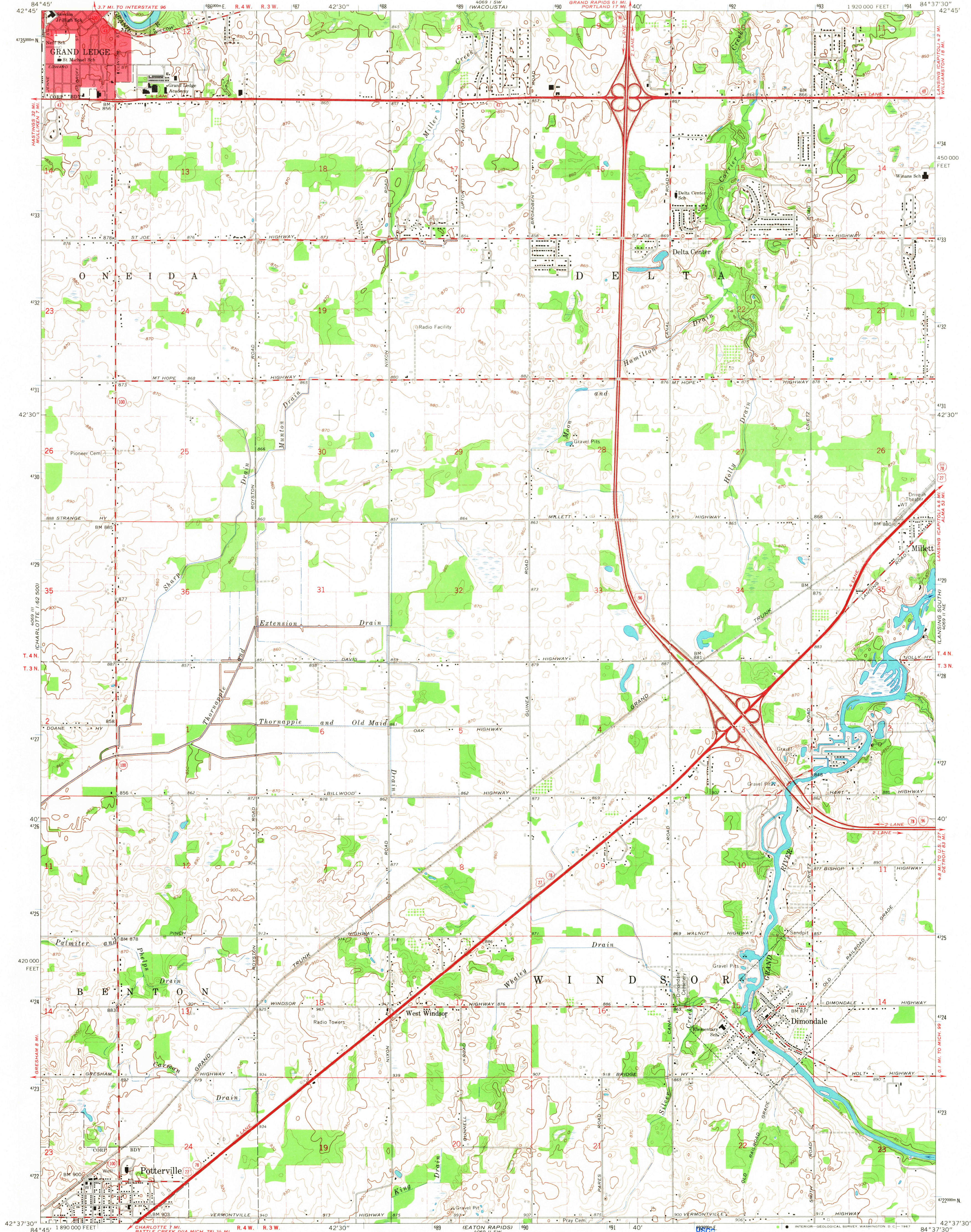


UNITED STATES
DEPARTMENT OF THE INTERIOR
GEOLOGICAL SURVEY

DIMONDALE QUADRANGLE
MICHIGAN—EATON CO.
7.5 MINUTE SERIES (TOPOGRAPHIC)
NW/4 LANSING 15' QUADRANGLE
1:920 000 FEET



Mapped, edited, and published by the Geological Survey

Control by USGS and USC&GS

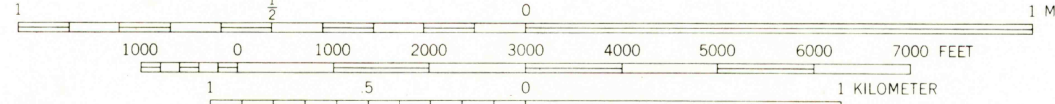
Topography by photogrammetric methods from aerial photographs taken 1964. Field checked 1965

Polyconic projection. 1927 North American datum
10,000-foot grid based on Michigan coordinate system, south zone
1000-meter Universal Transverse Mercator grid ticks,
zone 16, shown in blue

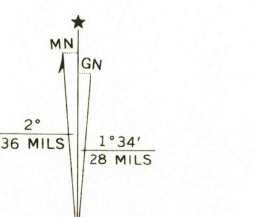
Red tint indicates areas in which only landmark buildings are shown

Fine red dashed lines indicate selected fence and field lines where generally visible on aerial photographs. This information is unchecked

SCALE 1:24 000



CONTOUR INTERVAL 10 FEET
DOTTED LINES REPRESENT 5-FOOT CONTOURS
DATUM IS MEAN SEA LEVEL



Historical File
Topographic Division

ROAD CLASSIFICATION
Heavy-duty ——— Light-duty ———
Medium-duty ——— Unimproved dirt ———
Interstate Route ——— U.S. Route ——— State Route ———



QUADRANGLE LOCATION

U.S.G.S.

FILE COPY
TOPOGRAPHIC DIVISION

DIMONDALE, MICH.
NW/4 LANSING 15' QUADRANGLE
N4237.5—W8437.5/7.5

1965

AMS 4069 II NW—SERIES V862

APR 12 1967