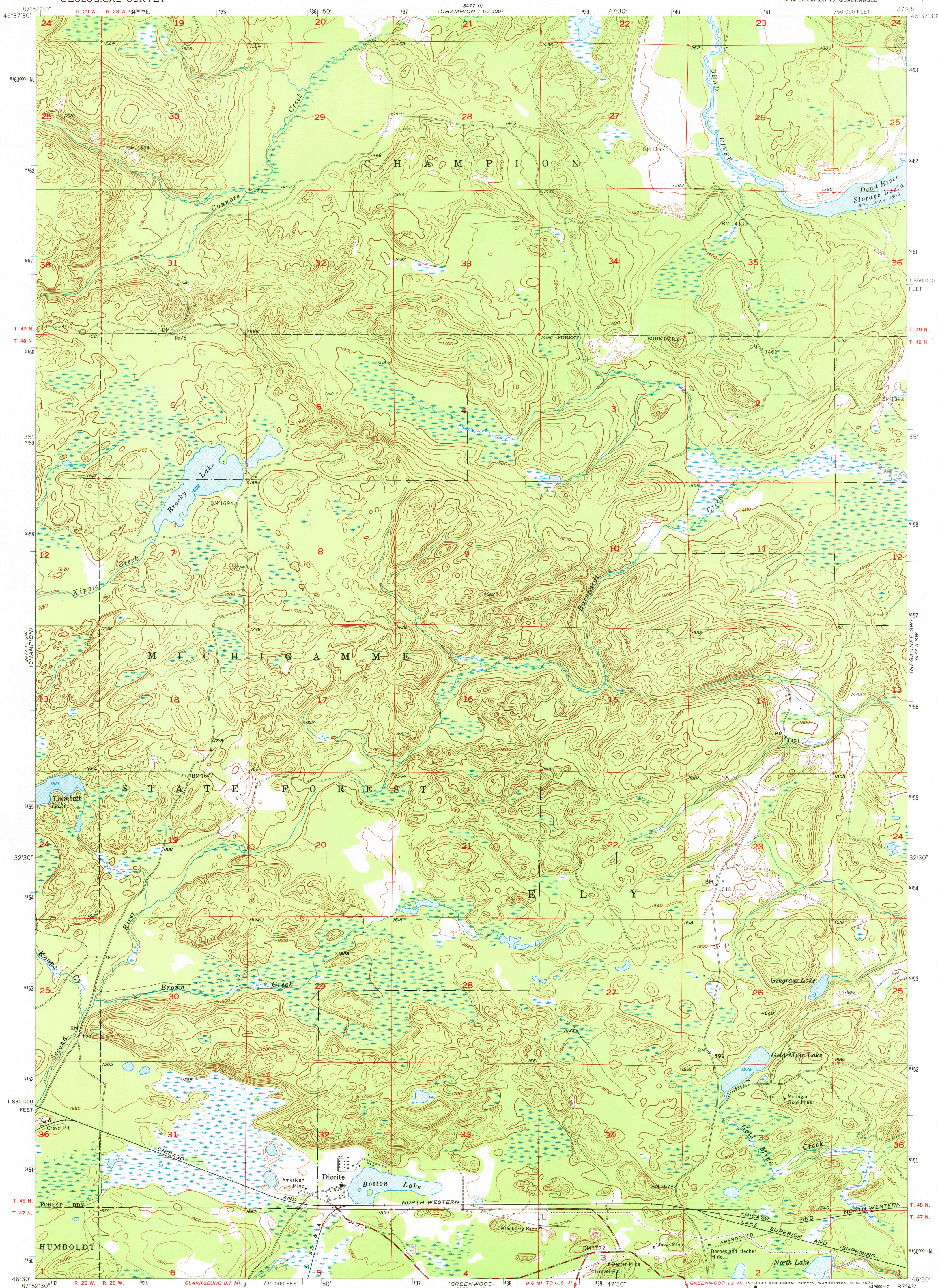
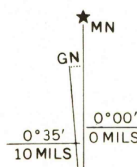


UNITED STATES
DEPARTMENT OF THE INTERIOR
GEOLOGICAL SURVEY

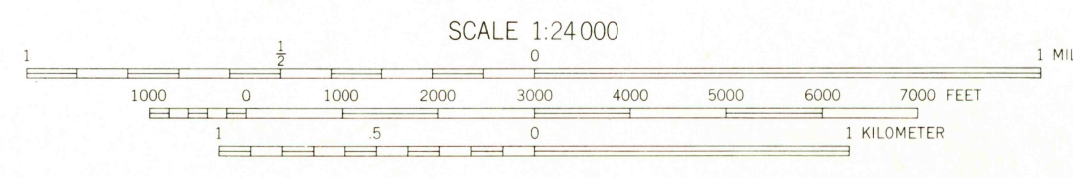
DIORITE QUADRANGLE
MICHIGAN-MARQUETTE CO.
7.5 MINUTE SERIES (TOPOGRAPHIC)
SE/4 CHAMPION 15' QUADRANGLE



Mapped, edited, and published by the Geological Survey
Control by USGS and USC&GS
Topography from aerial photographs by multiplex methods
Aerial photographs taken 1951. Field check 1955
Polyconic projection. 1927 North American datum
10,000-foot grid based on Michigan coordinate system,
west zone
1000-meter Universal Transverse Mercator grid ticks,
zone 16, shown in blue



UTM GRID AND 1955 MAGNETIC NORTH
DECLINATION AT CENTER OF SHEET



CONTOUR INTERVAL 20 FEET
DATUM IS MEAN SEA LEVEL

THIS MAP COMPLIES WITH NATIONAL MAP ACCURACY STANDARDS
FOR SALE BY U.S. GEOLOGICAL SURVEY, WASHINGTON, D.C. 20242
A FOLDER DESCRIBING TOPOGRAPHIC MAPS AND SYMBOLS IS AVAILABLE ON REQUEST



QUADRANGLE LOCATION

USGS
HISTORICAL FILE
TOPOGRAPHIC DIVISION

ROAD CLASSIFICATION
Heavy duty ——— Light duty ———
Medium-duty ——— Unimproved dirt ———
U.S. Route ——— State Route ———

DIORITE, MICH.
SE/4 CHAMPION 15' QUADRANGLE
N4630-W8745/7.5

1955
AMS 3477 III SE-SERIES V862