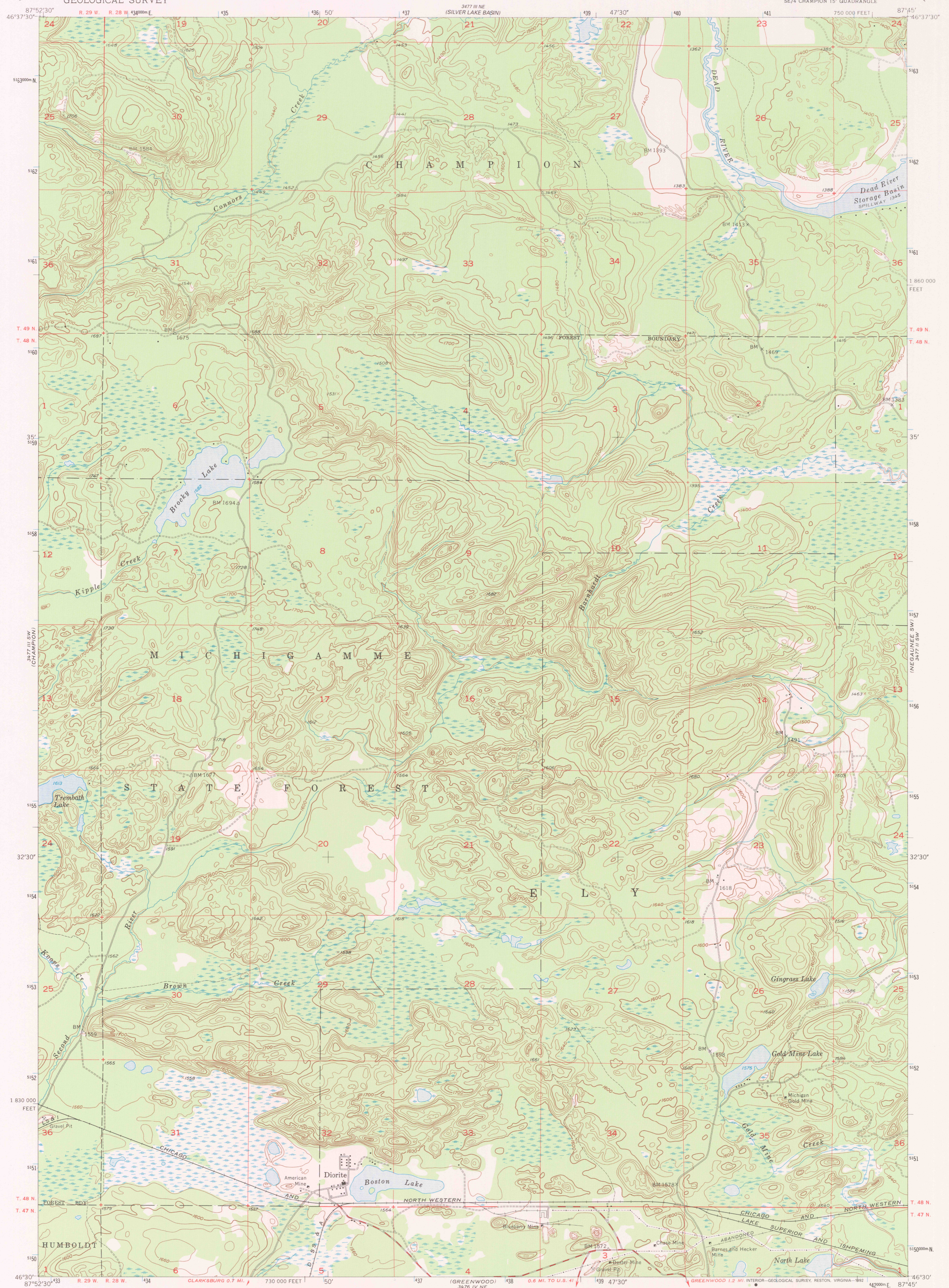
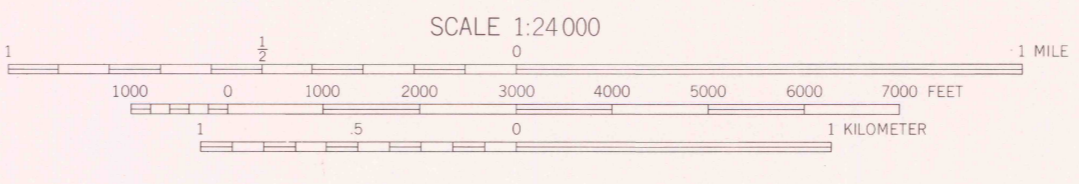
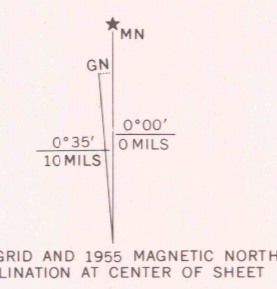


UNITED STATES
DEPARTMENT OF THE INTERIOR
GEOLOGICAL SURVEY

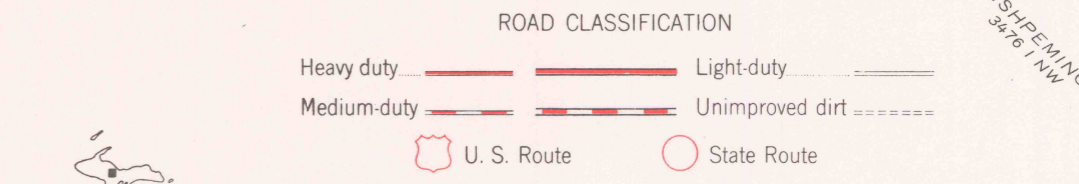
DIORITE QUADRANGLE
MICHIGAN-MARQUETTE CO.
7.5 MINUTE SERIES (TOPOGRAPHIC)
SE/4 CHAMPION 15' QUADRANGLE



Mapped, edited, and published by the Geological Survey
Control by USGS and USC&GS
Topography from aerial photographs by multiplex methods
Aerial photographs taken 1951. Field check 1955
Polyconic projection. 1927 North American datum
10,000-foot grid based on Michigan coordinate system,
west zone
1000-meter Universal Transverse Mercator grid ticks,
zone 16, shown in blue
The difference between 1927 North American Datum and North
American Datum of 1983 (NAD 83) for 7.5-minute intersections
is given in USGS Bulletin 1875. The NAD 83 is shown by
dashed corner ticks
Map photospected 1975
No major culture or drainage changes observed



CONTOUR INTERVAL 20 FEET
NATIONAL GEODETIC VERTICAL DATUM OF 1929
THIS MAP COMPLIES WITH NATIONAL MAP ACCURACY STANDARDS
FOR SALE BY U.S. GEOLOGICAL SURVEY
DENVER, COLORADO 80225, OR RESTON, VIRGINIA 22092
A FOLDER DESCRIBING TOPOGRAPHIC MAPS AND SYMBOLS IS AVAILABLE ON REQUEST



DIORITE, MICH.
SE/4 CHAMPION 15' QUADRANGLE
46087E-7F-024
1955
PHOTOINSPECTED 1975
DMA 3477 III SE-SERIES V862

