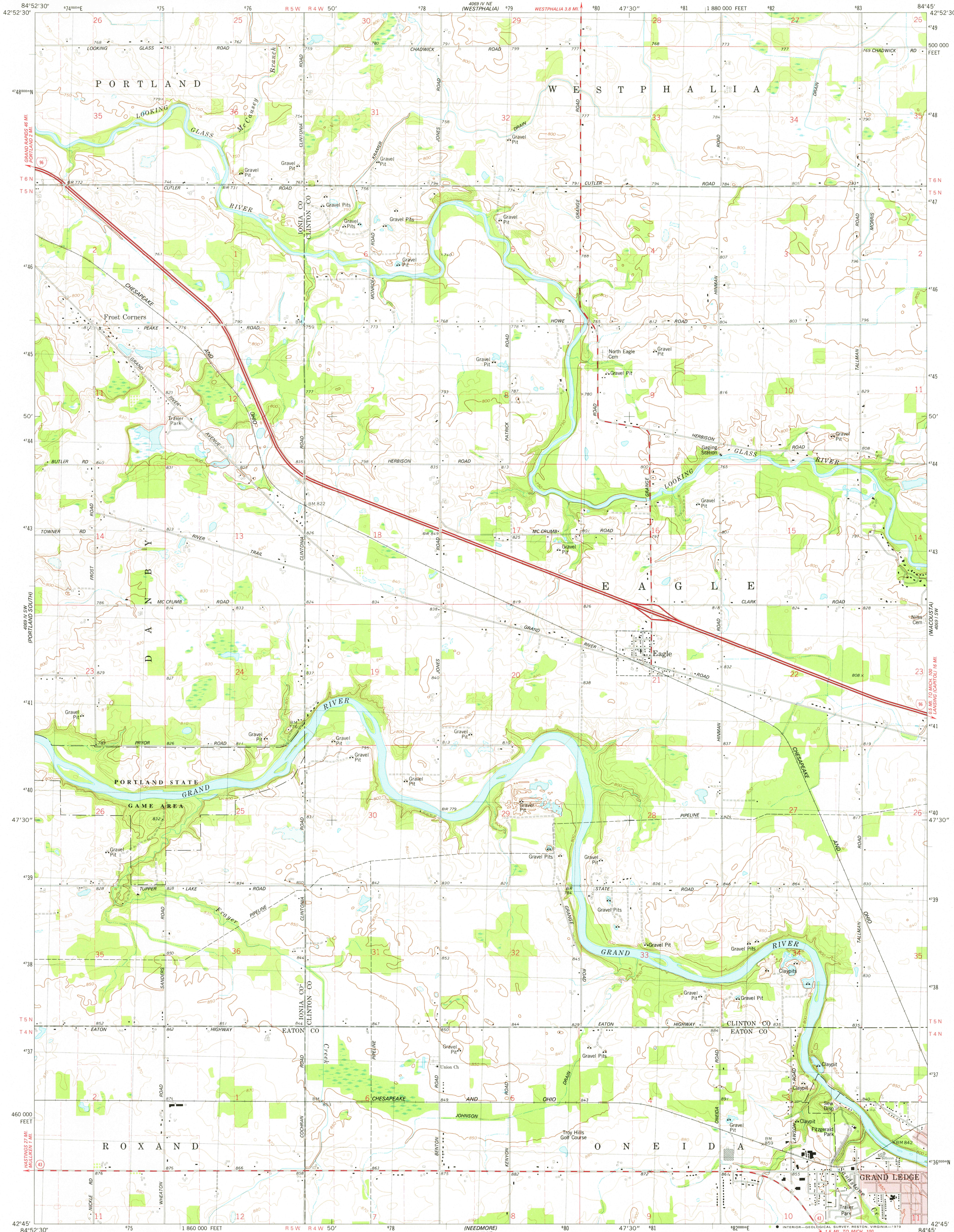


UNITED STATES
DEPARTMENT OF THE INTERIOR
GEOLOGICAL SURVEY



EAGLE QUADRANGLE
MICHIGAN
7.5 MINUTE SERIES (TOPOGRAPHIC)
SE/4 PORTLAND 15' QUADRANGLE

4889 100
MILEY



Mapped, edited, and published by the Geological Survey

Control by USGS and NOS/NOAA

Topography by photogrammetric methods from aerial photographs

taken 1974. Field checked 1975. Map edited 1978

Projection and 10,000-foot grid ticks: Michigan coordinate

system, south zone (Lambert conformal conic)

1000-meter Universal Transverse Mercator grid, zone 16

1927 North American datum

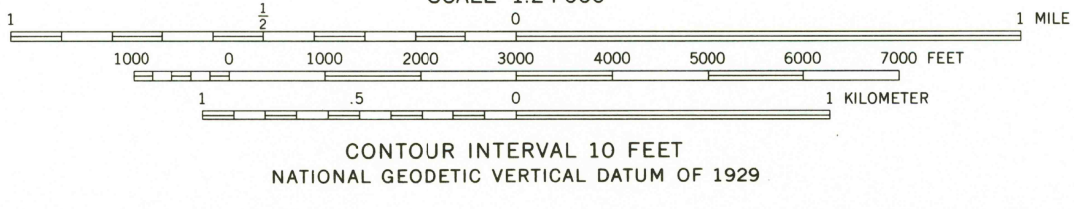
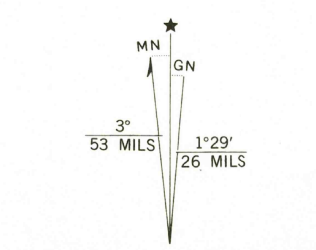
Red tint indicates areas in which only landmark buildings are shown

Fine red dashed lines indicate selected fence and field lines where

generally visible on aerial photographs. This information is unchecked

There may be private inholdings within the boundaries of

the National or State reservations shown on this map



THIS MAP COMPLIES WITH NATIONAL MAP ACCURACY STANDARDS
FOR SALE BY U.S. GEOLOGICAL SURVEY, RESTON, VIRGINIA 22092
AND BY THE GEOLOGICAL SURVEY DIVISION
MICHIGAN DEPARTMENT OF NATURAL RESOURCES, LANSING, MICHIGAN 48909
A FOLDER DESCRIBING TOPOGRAPHIC MAPS AND SYMBOLS IS AVAILABLE ON REQUEST



ROAD CLASSIFICATION
Primary highway, hard surface
Secondary highway, hard surface
Unimproved road
Interstate Route
U. S. Route
State Route

USGS
Historical File
Topographic Division

JUN 28 1979

EAGLE, MICH.
SE/4 PORTLAND 15' QUADRANGLE
N4245-W8445/7.5
1978

AMS 4069 IV SE-SERIES V862