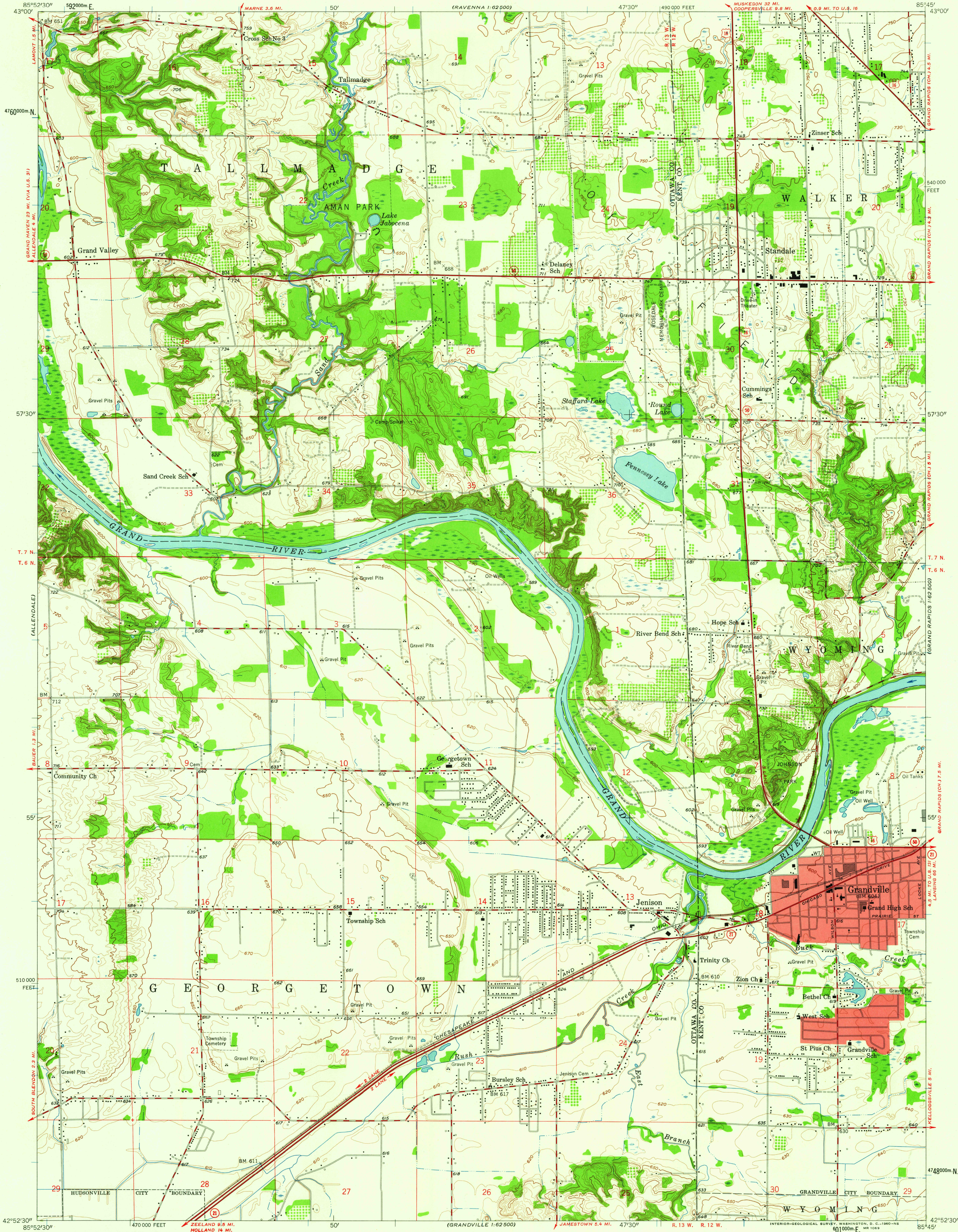


UNITED STATES
DEPARTMENT OF THE INTERIOR
GEOLOGICAL SURVEY

GRANDVILLE QUADRANGLE
MICHIGAN
7.5 MINUTE SERIES (TOPOGRAPHIC)
NE/4 GRANDVILLE 15' QUADRANGLE



Mapped, edited, and published by the Geological Survey

Control by USGS and USC&GS

Topography from aerial photographs by photogrammetric methods

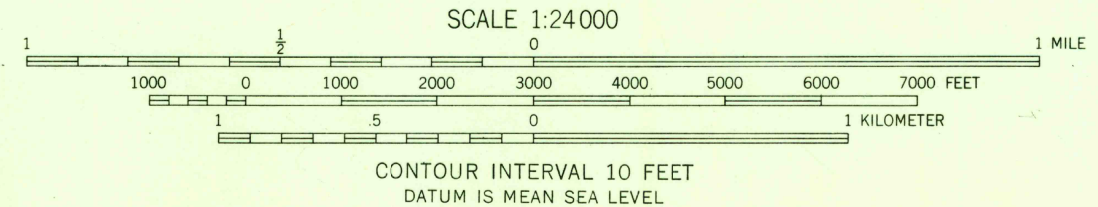
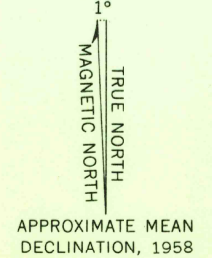
Aerial photographs taken 1957. Field check 1958

Polyconic projection. 1927 North American datum

10,000-foot grid based on Michigan coordinate system, central zone

1000-meter Universal Transverse Mercator grid ticks, zone 16, shown in blue

Red tint indicates areas in which only landmark buildings are shown



USGS
Historical File
Topographic Division

ROAD CLASSIFICATION
Heavy-duty ——— Light-duty ———
Medium-duty ——— Unimproved dirt ———
U.S. Route ——— State Route ———



U.S.G.S.
FILE COPY
TOPOGRAPHIC DIVISION

GRANDVILLE, MICH.
NE/4 GRANDVILLE 15' QUADRANGLE
N4252.5—W8545/7.5
1958

DEC 21 1959

3076