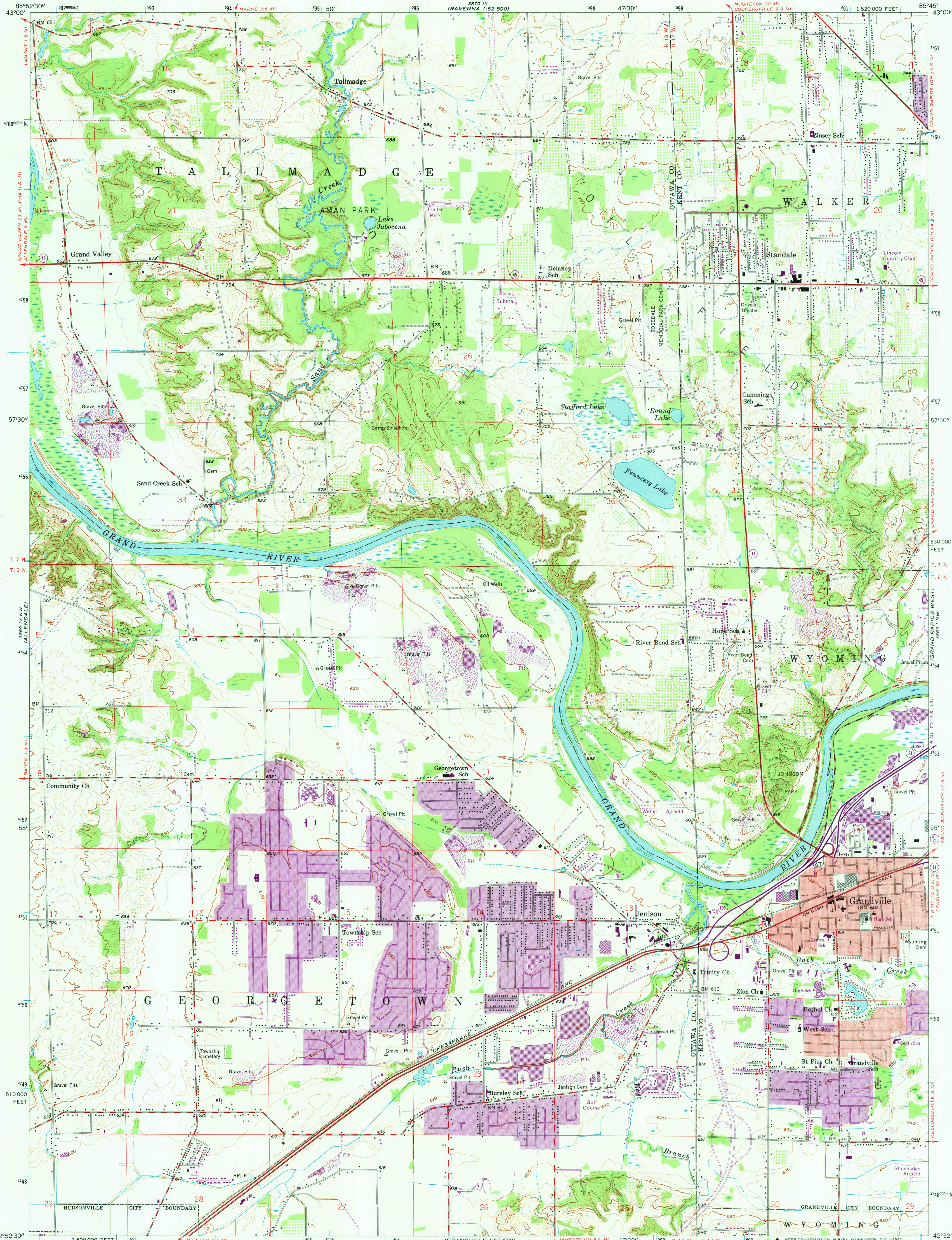


UNITED STATES  
DEPARTMENT OF THE INTERIOR  
GEOLOGICAL SURVEY

GRANDVILLE QUADRANGLE  
MICHIGAN  
7.5 MINUTE SERIES (TOPOGRAPHIC)  
NE 1/4 GRANDVILLE 15' QUADRANGLE



Maped, edited, and published by the Geological Survey

Control by USGS and USC&GS

Topography from aerial photographs by photogrammetric methods

Aerial photographs taken 1957. Field check 1958

Polyconic projection. 1927 North American datum

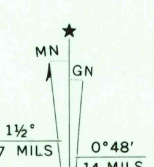
10,000-foot grid based on Michigan coordinate system, south zone

1000-meter Universal Transverse Mercator grid ticks, zone 16, shown in blue

Red tint indicates areas in which only landmark buildings are shown

Revisions shown in purple compiled from aerial photographs taken 1972. This information not field checked

Purple tint indicates extension of urban areas



SCALE 1:24 000

1000 0 1000 2000 3000 4000 5000 6000 7000 FEET

1 0 1 2 3 4 5 6 7 8 9 10 KILOMETER

CONTOUR INTERVAL 10 FEET

DATUM IS MEAN SEA LEVEL



ROAD CLASSIFICATION

Heavy-duty Light-duty

Medium-duty Unimproved dirt

U.S. Route State Route

Interstate Route

GRANDVILLE, MICH.

Historical File NE 1/4 GRANDVILLE 15' QUADRANGLE

Topographic Division 4252.5-W8545/7.5

1958

PHOTOREVISED 1972

AMS 3869 IV NE-SERIES V862

THIS MAP COMPLIES WITH NATIONAL MAP ACCURACY STANDARDS  
FOR SALE BY U.S. GEOLOGICAL SURVEY, WASHINGTON, D.C. 20242  
A FOLDER DESCRIBING TOPOGRAPHIC MAPS AND SYMBOLS IS AVAILABLE ON REQUEST