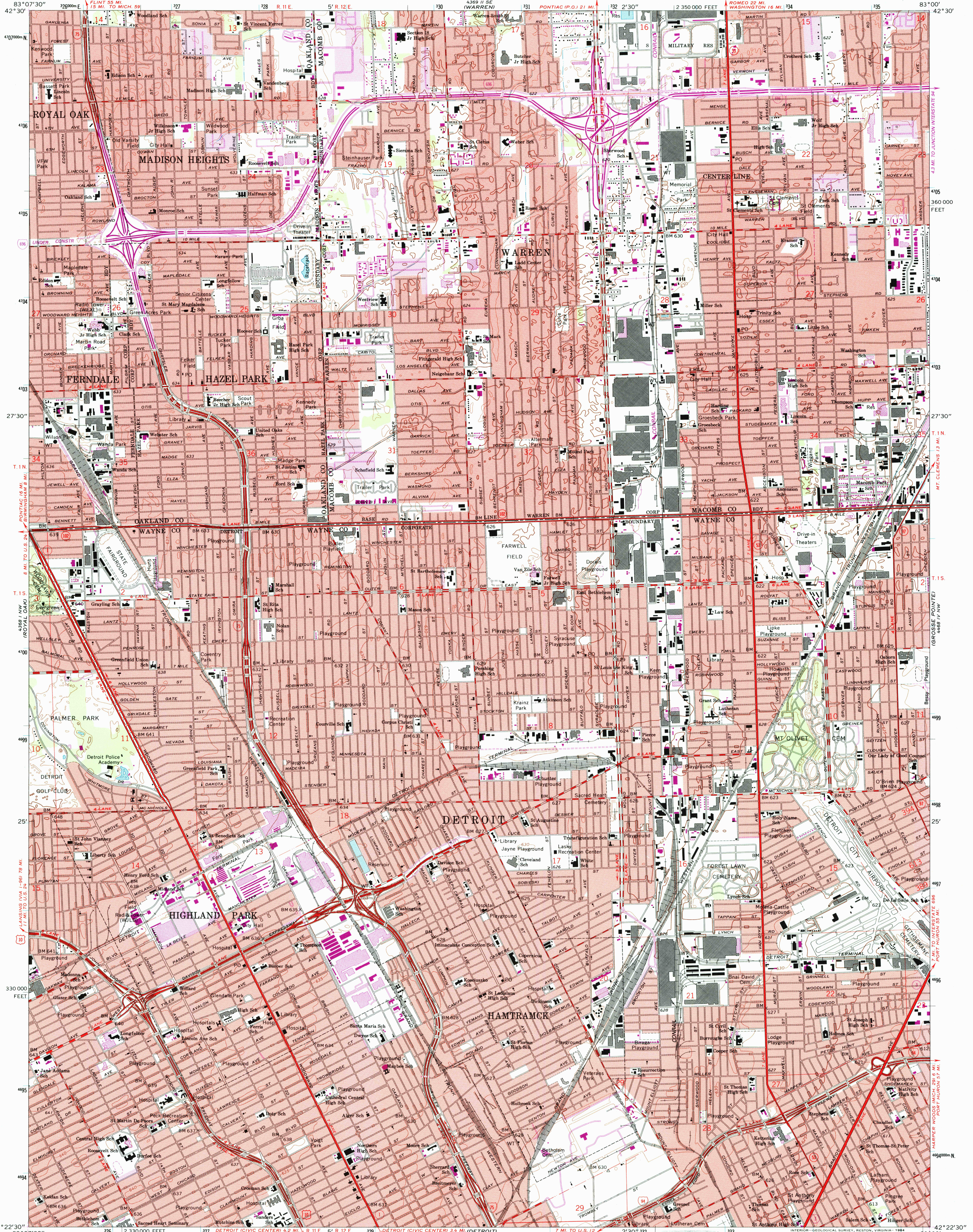


UNITED STATES
DEPARTMENT OF THE INTERIOR
GEOLOGICAL SURVEY

HIGHLAND PARK QUADRANGLE
MICHIGAN
7.5 MINUTE SERIES (TOPOGRAPHIC)



Mapped, edited, and published by the Geological Survey
in cooperation with State of Michigan agencies
Control by USGS, USC&GS, and City of Detroit
Planimetry by photogrammetric methods from aerial photographs
Topography by planetable surveys 1938. Revised from aerial
photographs taken 1967. Field checked 1968
Polyconic projection. 1927 North American datum
10,000-foot grid based on Michigan coordinate system, south zone
1000-meter Universal Transverse Mercator grid ticks,
zone 17, shown in blue
Red tint indicates areas in which only landmark buildings are shown
To place on the predicted North American Datum 1983,
move the projection lines 7 meters west as shown by
dashed corner ticks

UTM GRID AND 1983 MAGNETIC NORTH
DECLINATION AT CENTER OF SHEET

SCALE 1:24,000
1 0 1000 2000 3000 4000 5000 6000 7000 FEET
1 5 10 15 20 25 KILOMETER
CONTOUR INTERVAL 5 FEET
NATIONAL GEODETIC VERTICAL DATUM OF 1929

THIS MAP COMPLIES WITH NATIONAL MAP ACCURACY STANDARDS
FOR SALE BY U.S. GEOLOGICAL SURVEY, DENVER, COLORADO 80225, OR RESTON, VIRGINIA 22092
AND GEOLOGICAL SURVEY DIVISION
MICHIGAN DEPARTMENT OF NATURAL RESOURCES, LANSING, MICHIGAN 48909
A FOLDER DESCRIBING TOPOGRAPHIC MAPS AND SYMBOLS IS AVAILABLE ON REQUEST



ROAD CLASSIFICATION
Primary highway, all weather, hard surface
Secondary highway, all weather, hard surface
Light-duty road, all weather, improved surface
Unimproved road, fair or dry weather
Interstate Route
U. S. Route
State Route

HIGHLAND PARK, MICH.
N4222.5—W8300.7/5

1968
PHOTOREVISED 1983
DMA 4368 I NE—SERIES V862

Revisions shown in purple compiled from aerial
photographs taken 1982 and other sources
This information not field checked. Map edited 1983
Purple tint indicates extension of urban area

ISBN 0-607-24774-5
9 780607 247749