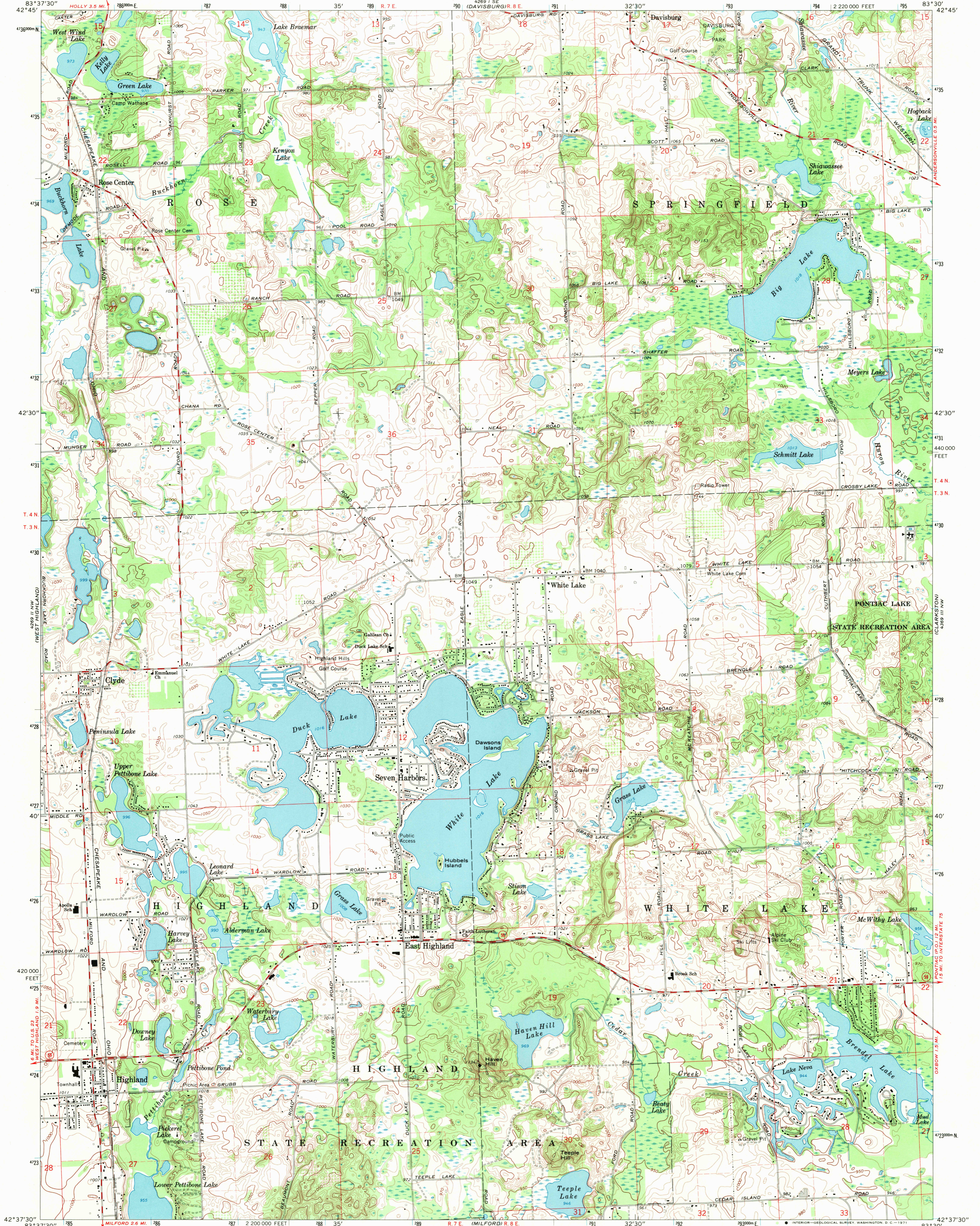
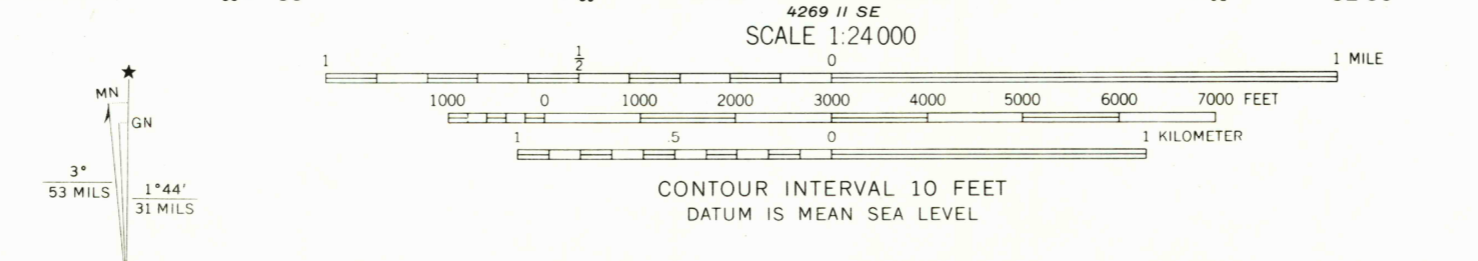


WEST 3/4
MILFORD 15'

WEST 3/4
MILFORD 15'



Mapped, edited, and published by the Geological Survey
Control by USGS and USC&GS
Topography by photogrammetric methods from aerial
photographs taken 1967. Field checked 1968
Supersedes map dated 1942
Polyconic projection. 1927 North American datum
10,000-foot grid based on Michigan coordinate system, south zone
1000-meter Universal Transverse Mercator grid ticks,
zone 17, shown in blue
Fine red dashed lines indicate selected fence and field lines where
generally visible on aerial photographs. This information is unchecked



ROAD CLASSIFICATION
Secondary highway, all weather, hard surface
Light-duty road, all weather, improved surface
Unimproved road, fair or dry weather
State Route

U.S.G.S.
FILE COPY
TOPOGRAPHIC DIVISION

HIGHLAND, MICH.
NE 1/4 MILFORD 15' QUADRANGLE
N4237.5—W8330.7.5
1968
AMS 4269 II NE—SERIES V862

3615
MAR 1 6 1971