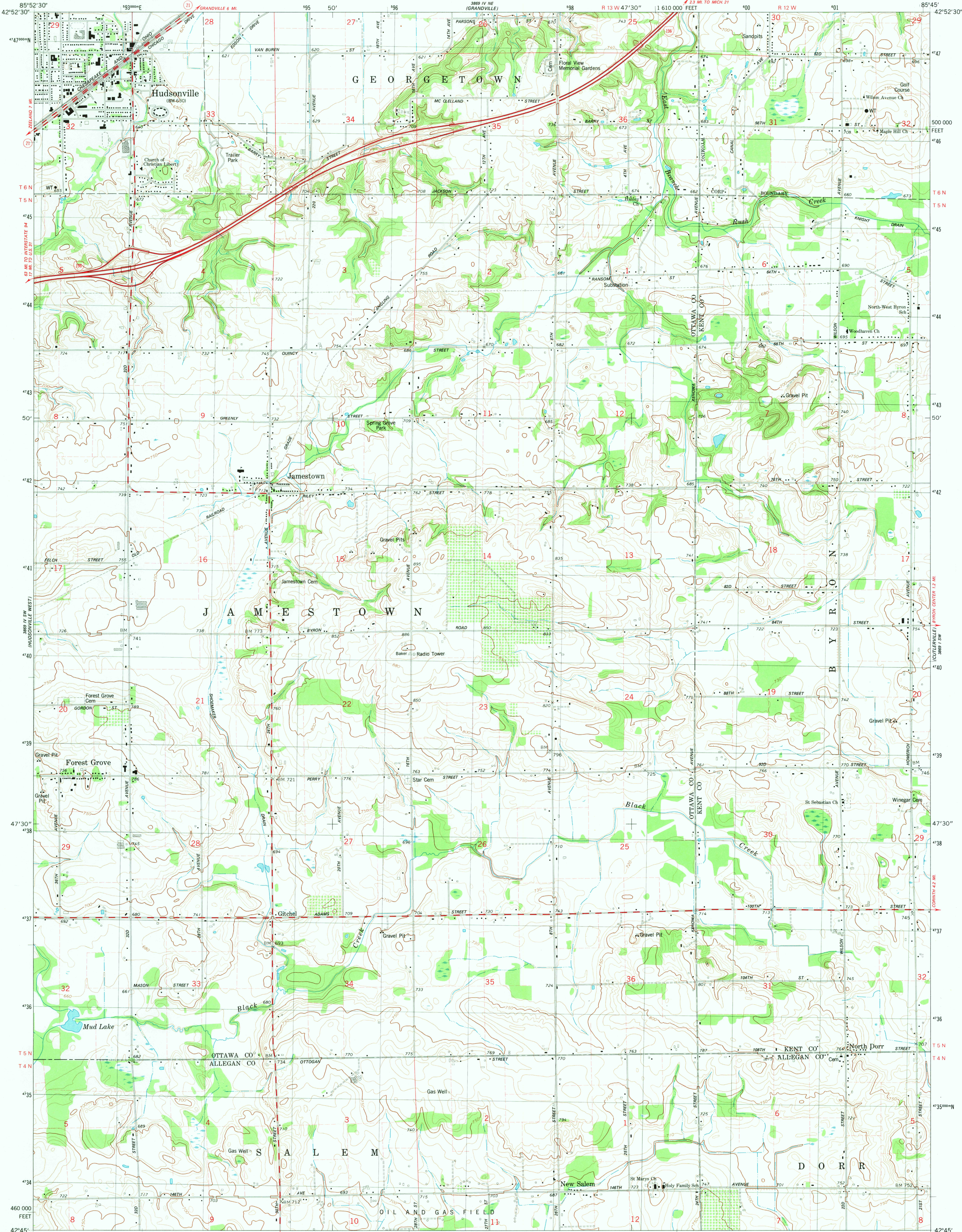
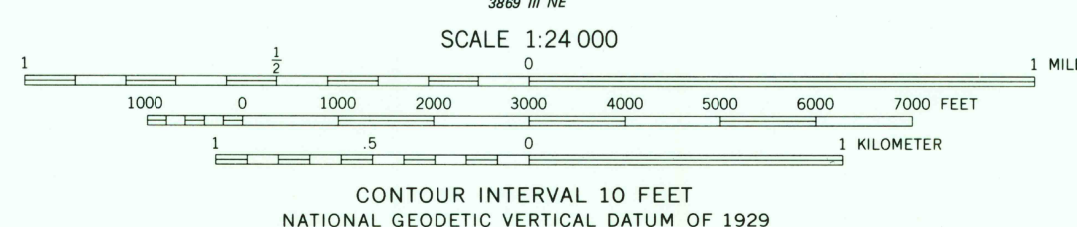
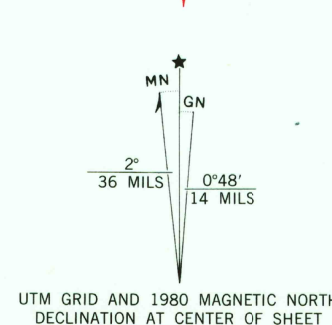


UNITED STATES
DEPARTMENT OF THE INTERIOR
GEOLOGICAL SURVEY

HUDSONVILLE EAST QUADRANGLE
MICHIGAN
7.5 MINUTE SERIES (TOPOGRAPHIC)
SE/4 GRANDVILLE 15' QUADRANGLE



Mapped, edited, and published by the Geological Survey
Control by USGS and NOS/NOAA
Topography by photogrammetric methods from aerial photographs
taken 1973. Field checked 1975. Map edited 1980.
Projection and 10,000-foot grid ticks: Michigan coordinate
system, south zone (Lambert conformal conic).
1000-meter Universal Transverse Mercator grid, zone 16
1927 North American Datum.
To place on the predicted North American Datum 1983
move the projection lines 1 meter north and
2 meters east as shown by dashed corner ticks.
Fine red dashed lines indicate selected fence and field lines where
generally visible on aerial photographs. This information is unchecked.



THIS MAP COMPLIES WITH NATIONAL MAP ACCURACY STANDARDS
FOR SALE BY U.S. GEOLOGICAL SURVEY, RESTON, VIRGINIA 22092
AND BY THE GEOLOGICAL SURVEY DIVISION
MICHIGAN DEPARTMENT OF NATURAL RESOURCES, LANSING, MICHIGAN 48909
A FOLDER DESCRIBING TOPOGRAPHIC MAPS AND SYMBOLS IS AVAILABLE ON REQUEST



ROAD CLASSIFICATION
Primary highway, hard surface
Secondary highway, hard surface
Interstate Route
U.S. Route
State Route
Light-duty road, hard or improved surface
Unimproved road

HUDSONVILLE EAST, MICH.
SE/4 GRANDVILLE 15' QUADRANGLE
N4245-W8545/7.5

NOV 12 1980

USGS
Historical File
Topographic Division

DMA 3869 IV SE-SERIES V862