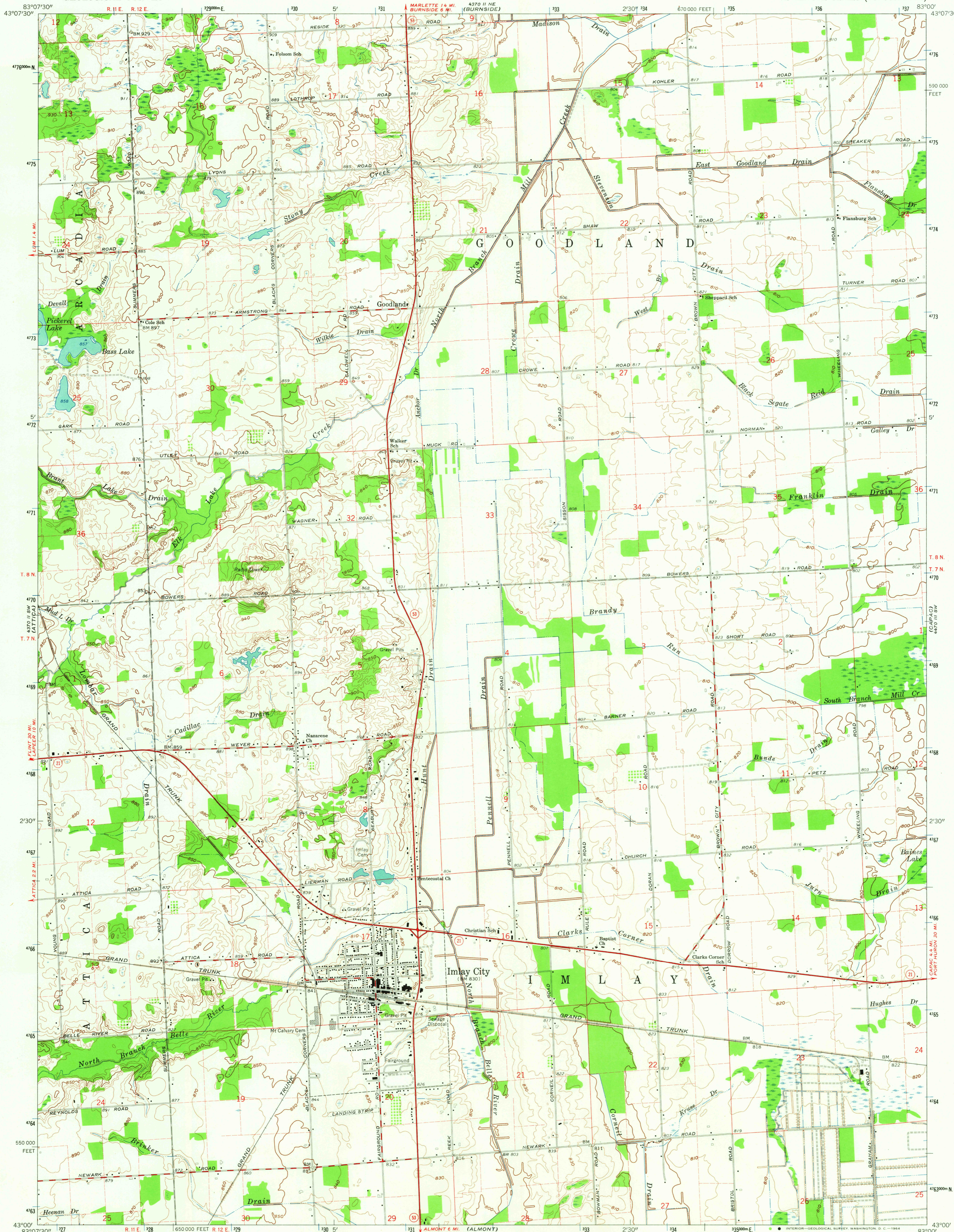


UNITED STATES
DEPARTMENT OF THE INTERIOR
GEOLOGICAL SURVEY

IMLAY CITY QUADRANGLE
MICHIGAN-LAPEER CO.
7.5 MINUTE SERIES (TOPOGRAPHIC)



Mapped, edited, and published by the Geological Survey

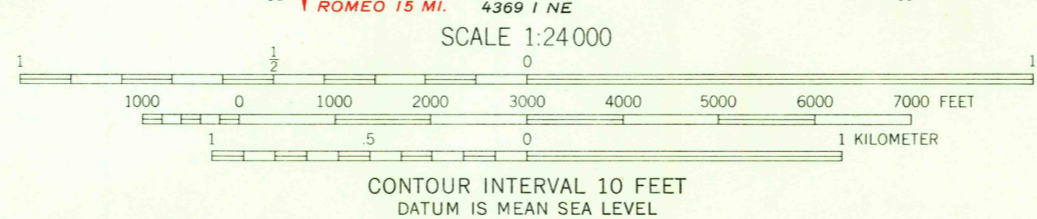
Control by USGS and USCGS

Topography by photogrammetric methods from aerial photographs taken 1958-59 and planimetric surveys 1963

Polyconic projection. 1927 North American datum 10,000-foot grid based on Michigan coordinate system, east zone 1000-meter Universal Transverse Mercator grid ticks, zone 17, shown in blue

Fine red dashed lines indicate selected fence and field lines where generally visible on aerial photographs. This information is unchecked

UTM GRID and 1963 MAGNETIC NORTH DECLINATION AT CENTER OF SHEET



USGS
Historical File
Topographic Division

ROAD CLASSIFICATION
Heavy-duty ——— Light-duty ———
Medium-duty ——— Unimproved dirt - - - -
○ State Route



U.S.G.S. IMLAY CITY, MICH.
N4300-W8300/7.5
1963
FILE COPY
TOPOGRAPHIC DIVISION

SEP 2 1 1964

THIS MAP COMPLIES WITH NATIONAL MAP ACCURACY STANDARDS
FOR SALE BY U. S. GEOLOGICAL SURVEY, WASHINGTON 25, D. C.
A FOLDER DESCRIBING TOPOGRAPHIC MAPS AND SYMBOLS IS AVAILABLE ON REQUEST

2590

AMS 4370 II SE-SERIES V862