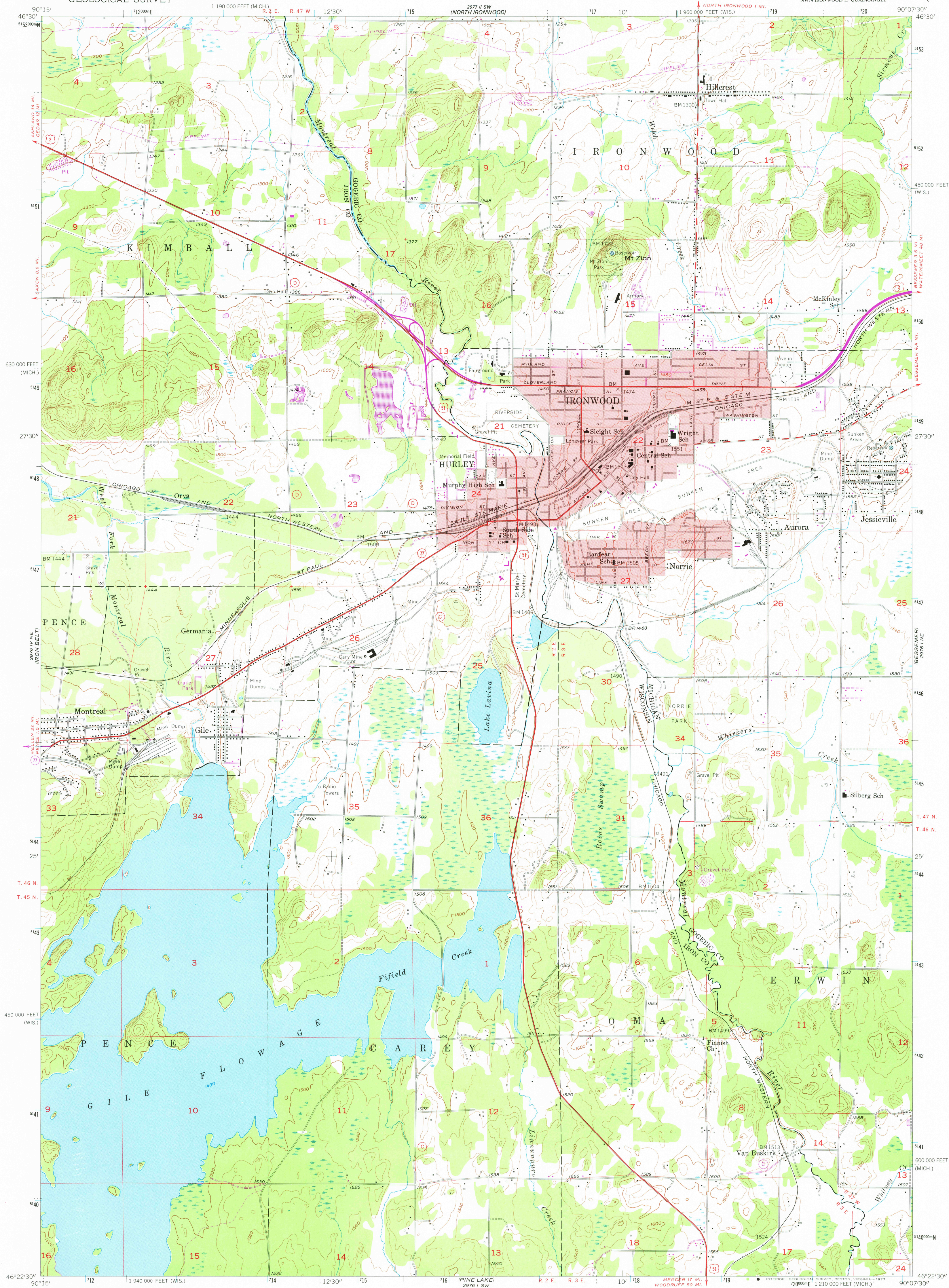


UNITED STATES
DEPARTMENT OF THE INTERIOR
GEOLOGICAL SURVEY

IRONWOOD QUADRANGLE
MICHIGAN-WISCONSIN
7.5 MINUTE SERIES (TOPOGRAPHIC)
NW 1/4 IRONWOOD 15' QUADRANGLE



Mapped, edited, and published by the Geological Survey

Control by USGS and USC&GS

Topography from aerial photographs by Kelsh plotter

Aerial photographs taken 1951. Field check 1955

Polycyclic projection. 1927 North American datum

10,000-foot grids based on Wisconsin coordinate system,

north zone, and Michigan coordinate system, north zone

Red tint indicates areas in which only

landmark buildings are shown

1000-meter Universal Transverse Mercator grid ticks,

zone 15, shown in blue

Revisions shown in purple compiled from aerial photographs

taken 1975. This information not field checked



CONTOUR INTERVAL 20 FEET

NATIONAL GEODETIC VERTICAL DATUM OF 1929

THIS MAP COMPLIES WITH NATIONAL MAP ACCURACY STANDARDS
FOR SALE BY U.S. GEOLOGICAL SURVEY, RESTON, VIRGINIA 22092
AND WISCONSIN GEOLOGICAL AND NATURAL HISTORY SURVEY, MADISON, WISCONSIN 53706
A FOLDER DESCRIBING TOPOGRAPHIC MAPS AND SYMBOLS IS AVAILABLE ON REQUEST

ROAD CLASSIFICATION
Heavy-duty ——— Light-duty ———
Medium-duty ——— Unimproved dirt ———
U.S. Route ——— State Route ———



USGS
Historical File
Topographic Division

IRONWOOD, MICH.-WIS.

NW 1/4 IRONWOOD 15' QUADRANGLE

14622.5-W9007.5

1955

PHOTOREVISED 1975

AMS 2976 1N-W-SERIES V861

2800

SEP 23 1977