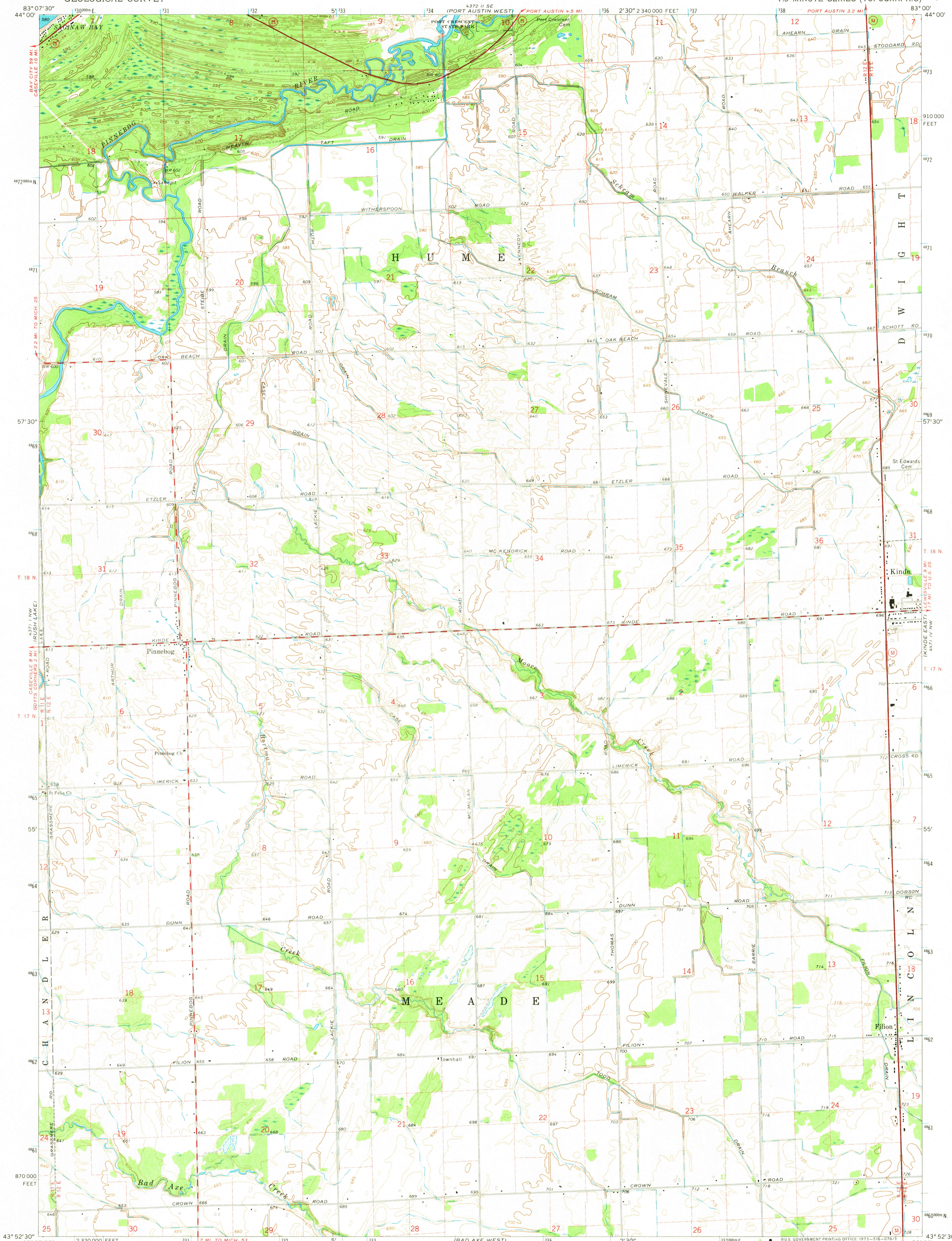
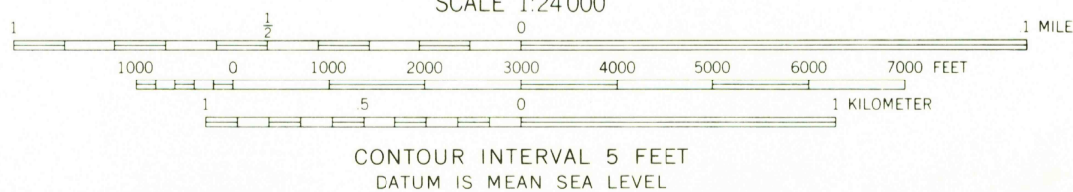


PORT AUSTIN EAST
44° 17' 15" N
83° 07' 30" W



Mapped, edited, and published by the Geological Survey in cooperation with State of Michigan agencies
Control by USGS and USC&GS
Topography by photogrammetric methods from aerial photographs taken 1968. Field checked 1970
Polyconic projection. 1927 North American datum
10,000-foot grid based on Michigan coordinate system, south zone
1000-meter Universal Transverse Mercator grid ticks, zone 17, shown in blue
Fine red dashed lines indicate selected fence and field lines where generally visible on aerial photographs. This information is unchecked



ROAD CLASSIFICATION

Primary highway, hard surface	Light duty road, hard or improved surface
Secondary highway, hard surface	Unimproved road
Interstate Route	U. S. Route
	State Route



KINDE WEST, MICH.
N4352.5—W8300/7.5
1970

JAN 30 1973
USGS HISTORICAL FILE TOPOGRAPHIC DIVISION

THIS MAP COMPLIES WITH NATIONAL MAP ACCURACY STANDARDS
FOR SALE BY U. S. GEOLOGICAL SURVEY, WASHINGTON, D. C. 20242
A FOLDER DESCRIBING TOPOGRAPHIC MAPS AND SYMBOLS IS AVAILABLE ON REQUEST

AMS 4371 1 NE—SERIES V862